

neighborhood news



December 2021

news for and about
Bellevue neighborhoods

Season of Cheer, Snowflake Lane, Garden D'Lights return for the holidays


bellevuedowntown.com/events/season-of-cheer

Bellevue's Season of Cheer (formerly "Magic Season") began its holiday run Nov. 19 and will continue until Jan. 9, 2022. Several holiday activities are marquee parts of the Bellevue Downtown



Association's Season of Cheer, which will include dazzling holiday lights at Downtown Park.

Snowflake Lane is celebrating 17 years as the region's most festive holiday show, and has returned in all its wonder! The nightly parade starts at 7 p.m., and runs through Friday, Dec. 24 on Bellevue Way, between Northeast Fourth and Northeast Eighth streets. Experience the wonder of falling snow, dazzling lights, festive music, toy drummers, dancers and your favorite characters!

 For alternate formats, interpreters, or reasonable accommodation requests please phone at least 48 hours in advance 425-452-2735 (voice) or email mheilman@bellevuewa.gov. For complaints regarding accommodations, contact City of Bellevue ADA/Title VI Administrator at 425-452-6168 (voice) or email ADATitleVI@bellevuewa.gov. If you are deaf or hard of hearing dial 711. All meetings are wheelchair accessible.

Subscribe to Neighborhood News electronically:
BellevueWA.gov/neighborhood-news

The City of Bellevue's Garden d'Lights event features a host of dramatic plants and animals fashioned out of rebar and colored lights at Bellevue Botanical Garden. A nightly wonder amid the natural beauty of the garden, Garden d'Lights will run from Nov. 27 to Dec. 31, 4:30-9 p.m. every day, including holidays. The event has delighted people for nearly three decades. There is a \$5 cost for adult admission to Garden d'Lights, but children 10 and under get in for free. On-site parking is also \$5, or free for people with limited mobility, verified via disability parking permit. Parking is free at nearby Wilburton Hill Park. Tickets are available online at GardendLights.org.



The Season of Cheer will also feature gingerbread workshops at KidsQuest Children's Museum and a stop at Meydenbauer Bay Park on Dec. 18, 8-9:30

Continued on next page

Continued from previous page

p.m. by Argosy Cruises' Holiday Ships Festival (ArgosyCruises.com).

The 24th annual Bellevue Downtown Ice Rink will be open daily, including holidays from Nov. 19 through Jan. 9, 2022. Reserve tickets at BellevueIceRink.com.

In other Bellevue events, holiday performances will take place at Meydenbauer Center Theatre Nov. 21-Dec. 3 and holiday ships along with a beach fire will light the night at Meydenbauer Bay Park on Dec. 18, 8-9:30 p.m.

Please drive, walk, ride and roll safely this holiday season and allow extra travel time to reach your destination. In the downtown area, drivers should be aware of pedestrians in crosswalks and driveways, especially near construction zones.

Drivers are also advised that Snowflake Lane will require the following street closures:

- Bellevue Way Northeast, from Northeast Fourth Street to Northeast Eighth Street, will be closed every evening, 6:45-7:45 p.m.
- Northeast Sixth Street, from 105th Avenue Northeast to Bellevue Way Northeast, will be closed 6-7:45 p.m.
- During closures on Bellevue Way Northeast, visitors to the Bellevue Arts Museum may park in the Westin Hotel parking garage, accessible from 105th Avenue Northeast.

For information on traffic impacts, check the city's traffic advisories webpage, updated weekly, and the real-time Bellevue traffic map and cameras.

Virtual Cultural Conversations

Tuesday Dec. 7, 1-2:30 p.m.

"Latinas on the Eastside: Courageous and Compassionate"

In December's conversation, we present the stories and work of courageous Latinas on the Eastside.

Sharing a bit of their journey and the "why" behind their work, we'll meet women who provide support to Spanish-



speaking residents and the wider community. Through their work, these women elevate the voice of the community, assist with challenges and opportunities, and provide welcoming spaces.

Courage can be many things; leading an organization, developing an innovative program, speaking truth in a challenging situation, creating culturally competent access and inclusion through the arts, and celebrating identity. The intention of this conversation is to inspire women to share their story, connect the community to resources and build community connections.

Following the presentation, we'll share conversations in small breakout rooms, including breakout rooms for those speaking Spanish.

The program is inspired by National Welcoming Week's "Courageous Mujer" (youtube.com/channel/UC3b5mlzMcDPSg17Zomui1xg) podcast and webcast.

Cultural Conversations is a program entering its 12th season. It has transformed relationships and perspectives among diverse women in our community through education and storytelling. For more information, accommodation needs, and to obtain the Zoom registration link (cityofbellevue.zoom.us/meeting/register/tJAkf-Gqrz0vGNQ850FeegU-KDTt5RinhbPh), contact neighborhoodoutreach@Bellevuewa.gov or 452-452-6836.

For alternate formats, interpreters, or reasonable accommodation requests please phone at least 48 hours in advance 425-452-6917 (voice) or email cross@bellevuewa.gov. For complaints regarding accommodations, contact City of Bellevue ADA/ Title VI Administrator at 425-452-6168 (voice). If you are deaf or hard of hearing dial 711. All meetings are wheelchair accessible.



Holiday fire safety

There are many things that bring us joy and make us feel festive around the holidays.

We may be decorating our trees



and putting presents around them. We're lighting our favorite holiday candles, and preparing for a holiday feast. Unfortunately, these very things can also pose an increased threat of home fires. By taking some basic safety precautions, however, you can enjoy your holiday traditions safely.

Unattended cooking remains the leading cause of home fires and fire injury. Stay in the kitchen when frying, grilling, boiling, or broiling your holiday meals. Encourage your family and friends to join you in the kitchen, but be sure to maintain a three-foot "kid-free" zone around any area where hot foods or drinks are being prepared. While we all appreciate the smell of warm cookies, don't rely on your nose to remind you that the oven is on! Set a timer when baking or roasting foods.

According to the National Fire Protection Association (NFPA), 25% of Christmas tree fires are caused by electrical problems. When decorating your tree, use lights that have a label of a recognized testing laboratory and follow manufacturers recommendations for number of strands to connect. If your tree is artificial, assure that it's labeled, certified, or identified by the manufacturer as fire-retardant. If your tree is fresh, water it daily. Keep all trees far from any heat source, including fireplaces, space heaters, radiators, candles, heat vents and lights.

Candles are an integral part of many holiday celebrations, so it should be no surprise that December is the peak month for candle fires. More than half of the fires start because the candles have been placed too close to items that could catch fire. Consider replacing open flame candles with battery-operated ones. There have been a lot of innovations in replicating traditional ambience, including cherished scents and

flickering candlelight. Battery-operated is best, but if you are burning real candles, a good rule of thumb is to keep them at least 12 inches away from anything that can burn, use sturdy candle holders and always blow out the flame when leaving the room.

For more information on holiday safety, visit [nfpa.org/holiday](https://www.nfpa.org/holiday) and [usfa.fema.gov/prevention/outreach/holiday.html](https://www.usfa.fema.gov/prevention/outreach/holiday.html)

Zero Waste Holidays

Did you know that nationwide, between November and January, we throw away a million tons of extra garbage each week? Consider implementing these zero-waste practices to avoid excess waste while still making holiday memories.



- **Wrap with reusables.** Save durable items like bags, boxes and bows for second use. Or use reusable cloth wrappings inspired by the Japanese Furoshiki tradition. Make it a family game to find the most creative zero-waste wrapping!
- **Zero-waste crafts:** See Bellevue Utilities' Zero Waste Holiday Guide for holiday crafts for kids at BellevueWA.gov/recycle-at-home.
- **Ditch disposables.** Say no to single-use plastic straws, utensils, and water bottles. A few extra dishes can save tons of plastic waste from going into a landfill.
- **Limit leftovers.** Waste less food after big holiday meals by sending guests home with leftovers in reusable containers and freezing leftovers for longer-lasting freshness. See more tips for reducing food waste at BellevueWA.gov/recycle-food-waste.
- **Flatten and recycle cardboard boxes in covered recycling carts.** This saves space, keeps cardboard clean and dry, and ensures your boxes can be made into new products.
- **Remember to recycle when holidays are over.** Most wrapping paper can be recycled in

Continued on next page

Continued from previous page

your curbside cart. Many organizations offer holiday light recycling, and you can compost your holiday tree and other greenery.

See [KingCounty.gov/green-holidays](https://kingcounty.gov/green-holidays) for more ways to enjoy a zero-waste winter holiday season!

Eco Book Bingo & Zero Waste Winter Challenge!

Bellevue Utilities and Bellevue's King County Library System libraries have partnered to offer a Zero Waste Book Bingo and winter challenge for kids of all ages! Visit any of the four KCLS libraries in Bellevue to request a free bingo board.

Fill in the bingo board with books you read about nature and protecting our planet, as well as simple actions you take to reduce waste. Kids that return their completed bingo board to the library (Downtown Bellevue, Crossroads, Lake Hills or Newport Way libraries) by Dec. 31 receive a pencil made from recycled newspaper. Bingo boards include suggestions for environmental books in the library system, or kids can ask the super knowledgeable staff at their library for more ideas. Happy reading!



Book Bingo & Zero Waste Winter Challenge!

1. Fill in this bingo board with the books you read and actions you complete through December 31, 2021.
2. Connect four squares in a horizontal, diagonal or vertical line and return this card to one of your King County Libraries in Bellevue to receive a pencil made from recycled newspaper!

• Newport Way 14250 SE Newport Way
• Lake Hills 15590 Lake Hills Boulevard
• Bellevue 1111 150th Ave NE
• Crossroads 15500 NE 8th Street

Read a book about trees or plants. Write the title here:	What is something you personally can reuse or rethink to reduce waste?	Is most wrapping paper recyclable? <input type="checkbox"/> Yes <input type="checkbox"/> No	Read a book about composting or food scraps. Write the title here:
Go outside. Write three natural items you see here: 1. _____ 2. _____ 3. _____	Read a book about someone that helped protect the Earth. Who did you read about?	Read a book about birds or animals. Write the title here:	Do items need to be clean, empty and dry before you recycle them? <input type="checkbox"/> Yes <input type="checkbox"/> No
Read a book about recycling. Write the title of the book you read here:	What is one item you can recycle at home?	Where does pet waste belong? <input type="checkbox"/> Garbage <input type="checkbox"/> Recycling <input type="checkbox"/> Compost	Read a book about plastics and our environment. What is one single-use plastic item you can eliminate from your life?
Make a craft project using recycled materials. What did you make?	Read a book about an outdoor adventure. What did you read?	Read a book about ways you can help the earth. Write one action you learned about here:	What is something you did today to reduce garbage?

One entry and one prize per person. Bingo prizes available until December 31, 2021 while supplies last. The City and KCLS reserve the right to disqualify entries with inaccurate information or for not complying with the game.

Facing a past-due utilities bill? Contact us about available help

Bellevue Utilities is committed to helping customers who have had difficulty paying utility bills, especially due to financial impacts caused by the COVID-19 pandemic. The governor's water shut-off moratorium ended on



Sept. 30, but Utilities will continue to suspend water shut-offs and late fees for nonpayment through the end of the year to provide customers additional time to pay past-due balances and/or set up payment plans.

We encourage all customers who have or may face a past-due balance to contact us as early as possible about available support options, some of which are listed below. Other financial assistance programs are listed on the City's COVID-19 Community Resources page at BellevueWA.gov/COVID-19.

- **Payment Plans:** Utilities staff can help set up flexible payment plans that work with customer needs. Please contact 425-452-6973 or myutilitybill@bellevuewa.gov to discuss options.
- **Emergency Assistance Program:** This can help cover up to four months of basic water, sewer and drainage service charges for customers who have faced a one-time financial shock, such as job or income loss due to COVID. To be eligible, customers must meet the program's low-income guidelines for the past 30 days and not receive other Utilities financial assistance. For more information and to apply, visit BellevueWA.gov/utility-relief, or contact 425-452-5285 or utilityrelief@bellevuewa.gov.
- **Utility Rate Relief Program:** This program provides a discount on basic utility costs for water, wastewater and drainage to low-income seniors (62 and older) and low-income persons with permanent disabilities. Customers must meet specific residency and income guidelines. Visit BellevueWA.gov/utility-relief or contact 425-452-5285 or utilityrelief@bellevuewa.gov to learn more and apply.
- **Low-Income Household Water Assistance Program (LIHWAP):** This federal program can help cover past-due balances on water and/or wastewater bills for customers who meet the state's low-income guidelines. To learn more about program eligibility and apply for assistance, visit Hopelink.org/need-help/energy or call 425-869-6000.

The NEP votes are in!

Woodridge neighborhood chooses four projects

Thanks to all Woodridge neighbors who participated in the Neighborhood Enhancement Program over the past several months. The program kicked off in April, with the city receiving 61 resident-identified project ideas for how to spend the \$161,000 budget allocated for the Woodridge Neighborhood Area. City staff reviewed each of the submitted project ideas for accessibility, feasibility, cost, timeline and maintainability. In September, residents were presented nine projects on the ballot for consideration, with four projects chosen by residents to receive funding.



1. **Woodridge Trail Enhancements.** This project will include many enhancements including: installation of trail drainage to help with trail water issues in the winter; trail surfacing for the entire system; the addition of a bike rack and gravel pad at the Southeast 13th Street trailhead; the installation of Mutt Mitt dog waste stations and a trash receptacle at each trailhead; and the installation of trail bridge deck grip plates to all bridges in system to alleviate the potential for slippery surfaces during the winter rainy season.
2. **Woodridge Southeast 8th Gateway Entrance Landscaping.** This project will provide new landscaping along 121st Avenue Southeast between Southeast 8th Street and Southeast 10th Street, with emphasis around the Woodridge neighborhood entrance sign. The plantings will replace aging, dead and dying plants, fill in missing locations, and replant in areas impacted by construction. The existing irrigation system will receive minor updates to include water conserving technologies.
3. **Richards Creek Open Space Invasive Vegetation Removal & Native Planting.** This project will involve the removal of non-native invasive vegetation from natural wetland areas within

Richards Creek Open Space. The scope of work will involve the removal of non-native invasive vegetation from the Richards Creek riparian buffers. All the areas impacted by the removal of invasive vegetation will be replanted with native trees and shrubs that are suitable for site conditions. This project will result in a more diverse and healthier wetland ecosystem that should enhance wildlife habitat and improve ecosystem functions.

4. **Residential Street Lights at three selected locations.**

- ◆ Southeast 16th Place between 121st Avenue Southeast and 123rd Avenue Southeast
- ◆ 121st Avenue Southeast between Southeast 15th Street and Southeast 16th Place
- ◆ 127th Avenue Southeast between Southeast 20th Place and Southeast 23rd Street

This project will install up to three (3) new PSE-owned and maintained LED streetlights within the street limits detailed in the locations above. The new poles will reside in City of Bellevue right-of-way and light public streets. A City of Bellevue lighting engineer will determine exact street light placement based on available right-of-way, available power, and relation to underground utilities.



New streetlights also require adjacent homeowner approval prior to installation. Project costs will include new poles, new LED streetlights, all necessary trenching and wiring, and property restoration. All work will be conducted by Puget Sound Energy.

Continued from previous page

NEP is a city-funded, capital improvements program that allows residents to propose and select small-scale projects to improve the quality of life and enhance the character of their neighborhood area.

In August 2015, Bellevue's City Council dedicated \$5 million to NEP. The \$5 million allocation is distributed among the city's 14 NEP Neighborhood Areas based on the number of households in each area. NEP rotates through the 14 Neighborhood Areas at a rate of two Neighborhood Areas per year.

Next on the list for NEP in 2022, are the Newport and Somerset Neighborhood Areas. Newport will kick off in January with a virtual public meeting. Look for NEP to come to Somerset in early April. To find out which NEP Neighborhood Area you call home, please visit BellevueWA.gov/nep.

Utility box beautification expanded to Downtown

The City of Bellevue is looking for more Eastside artists to design artworks for utility and signal boxes in the city, after a successful round of art collected and installed on utility boxes in the BelRed Arts District earlier this year.



This latest opportunity is open to all visual artists living on the Eastside, working in any medium that can be digitally reproduced on a two-dimensional vinyl wrap. Selected

artists will receive a stipend ranging from \$800 to \$1,100 to create artwork for utility boxes in Bellevue's downtown area.

The deadline to apply is Dec. 8 at midnight. The call for artists and the Eastside Artist Roster, with which applicants must be registered to participate, are both online: bellevuearts.smapply.io/

All questions should be directed to Manette Stamm on the city's arts team at 425-452-4064 or mstamm@bellevuewa.gov. More information

on the city's public art program, including a look at the featured artists and works selected for the BelRed utility box art wraps, is available on the city's Public Art and Opportunities webpage.



Watch out for impostors!

Tony Leahy, CENTS Executive Director

SeniorMoneyProject.org

In an impostor scam, someone pretends to be someone else for the purpose of getting your personal or financial information. This



was the most-reported scam category in 2019, according to the Federal Trade Commission.

Anybody can pretend to be anybody!

A scammer can pretend to be from a government agency, like the IRS, a business, such as Bank of America, or a family member or friend. Scammers are even pretending to be a love interest on social media and dating websites.

Tell-tale signs of a scam

- The government agency or business asks for sensitive information over the phone, text or email.
- They contact you to get sensitive information that they should already have.
- They ask you to wire money or send it via an untraceable manner, such as Money Pak or Green Dot cards.
- Someone you really don't know very well asks you for money.

Steps to avoid impostor scams

1. Don't be rushed, pressured or make a decision in a panic. Scammers try to scare you so you act without thinking things through.
2. Verify you are communicating with who you think you are. Don't just respond to the

number in the email, voicemail, or text. Look up the correct number in the phone book, on your bill, or online. Sadly, scammers are now setting up imposter websites so you want to make sure you are contacting the legitimate business or government agency if you look it up online.

3. Be very judicious when you provide personal and/or financial information. Do not provide this over text or email.
4. Do not wire money or send it in an untraceable manner.
5. Don't loan money to people you don't really know. If you do decide to loan someone money, even someone you know, make a contract and make sure you have that person's name, address, and contact information.

For more information, there are helpful videos and resources at SeniorMoneyProject.org.

South Bellevue Park-and-Ride opens

Sound Transit Express and King County Metro riders can now use the South Bellevue Park-and-Ride for transit service for routes 550, 556, 241 and 249.



City of Bellevue and Sound Transit elected officials and staff formally opened the South Bellevue Park-and-Ride garage on Nov. 15.

The garage features:

- 1,500 parking stalls
- A connection to the I-90 and Mercer Slough trails to facilitate non-motorized access to transit
- Bicycle racks including a bike cage for secure storage of up to 35 bikes, with additional racks and on-demand lockers to be added when East Link opens
- A nature overlook of Mercer Slough, open to the public

- Public art by artist Katy Stone

Construction continues to complete the South Bellevue light rail station as part of Sound Transit's East Link Extension project. East Link service begins in 2023 and will be known as the 2 Line. The park-and-ride and future station are located at 2700 Bellevue Way Southeast, Bellevue, Wash.

For bus stop and schedule information:

- ST Express routes 550 and 556: soundtransit.org/ride-with-us/schedules-maps
- King County Metro routes 241 and 249: kingcounty.gov/depts/transportation/metro/schedules-maps.

New report about the effects of navigation apps

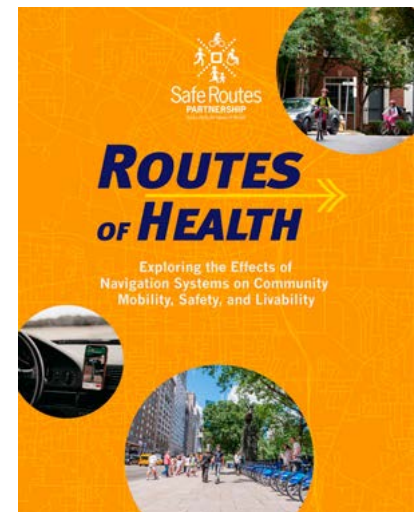
Are new navigation systems such as Waze and Google Maps contributing to transportation challenges?

In 2020, the City of Bellevue partnered with the national Safe Routes Partnership to explore the effects of navigation

systems, such as Google Maps and Waze, on community mobility, safety and livability.

Bellevue was one of five case study communities, along with Orlando, Charlotte, Atlanta and Montgomery County, Md., selected to provide background on residents' experiences dealing with the negative implications of navigation apps.

The result is a new Routes of Health report (BellevueWA.gov/sites/default/files/media/pdf/document/2021/routes-of-health-final-report.pdf) on the use of the navigation systems by automobile drivers and other road users. Some of the findings detail the "Consequences of Modern Navigation System Use," including: changing traffic patterns, questionable effects on reducing traffic congestion, interfering with emergency operations, contributing to distracted driving and



Continued on next page

Continued from previous page

other poor driver behaviors, health impacts and impacts that exacerbate inequities.

The study includes an appendix specific to Bellevue (BellevueWA.gov/sites/default/files/media/pdf_document/2021/routes-of-health-appendix.pdf). Key community engagement takeaways from Bellevue include:

- Collaboration and communication between City staff and residents are important to addressing traffic safety challenges.
- Navigation apps are a small part of a larger traffic safety issue.
- Residents want more transparency with navigation app companies, not solely to complain about issues, but to understand more about how these platforms work and how they can be used to advance safe travel.

Bellevue Utilities winter weather preparedness tips

With winter weather on the way, now is a good time to take steps to prepare to protect yourself, your loved ones and your home from the potential for flooding and freezing. Below are a few top tips.

Keep storm drains clear of debris

Fallen leaves and debris can create big problems for our storm drains. Utility crews monitor storm drains regularly, but with 20,000 drains around the city, we can use your help. You can help prevent flooding on your street by keeping your storm drain surfaces clear.

Please only clear drains if it is safe and you can work from a sidewalk, out of the street. Put all leaves and compostable debris in your organics cart. If



you see a drain flooded below the street surface, or if you experience any flooding issues, contact Bellevue Utilities right away at 425-452-7840. Crews are available to assist 24/7.

More guidance to help prevent flooding and steps to take if you experience flooding on your property is at BellevueWA.gov/prevent-flooding.

Winterize your home to prevent frozen pipes

When temperatures fall, unprotected water pipes can freeze or break.

Before the cold hits, take these steps to protect your pipes and save yourself the mess, cost and headache of damaged or burst pipes.



- **Insulate pipes in exposed areas** like your home's crawl space, basement or attic. You can also wrap pipes with heat tape—follow manufacturer instructions closely.
- **Seal leaks and close foundation vents** to keep freezing air out. Open vents again in the spring to prevent dry rot.
- **Drain and disconnect** garden hoses and insulate hose bibs. Winterize irrigation systems appropriately.
- **Keep heat set to 55 degrees** during freezing weather spells, especially when leaving home for several days.
- **Crack a faucet** in extreme cold weather. The trickle can help keep pipes from freezing.

If your pipes freeze or break

- **Know your water shut-off valve location** to turn off gushing water quickly. It is usually located in a basement, garage, or outside near the foundation. If you do not have a shut-off valve or it is broken, you can also turn off the water at the water meter. See BellevueWA.gov/TurnOffWater for a guide.
- **To thaw frozen pipes safely**, apply rags soaked in hot water (use water from your toilet tank or emergency supply). For your safety, NEVER use an open flame or electrical device while standing in water.

If you need help shutting off your water in an emergency, call Bellevue Utilities 24/7 at 425-452-7840.

Who to call, where to turn in bad weather



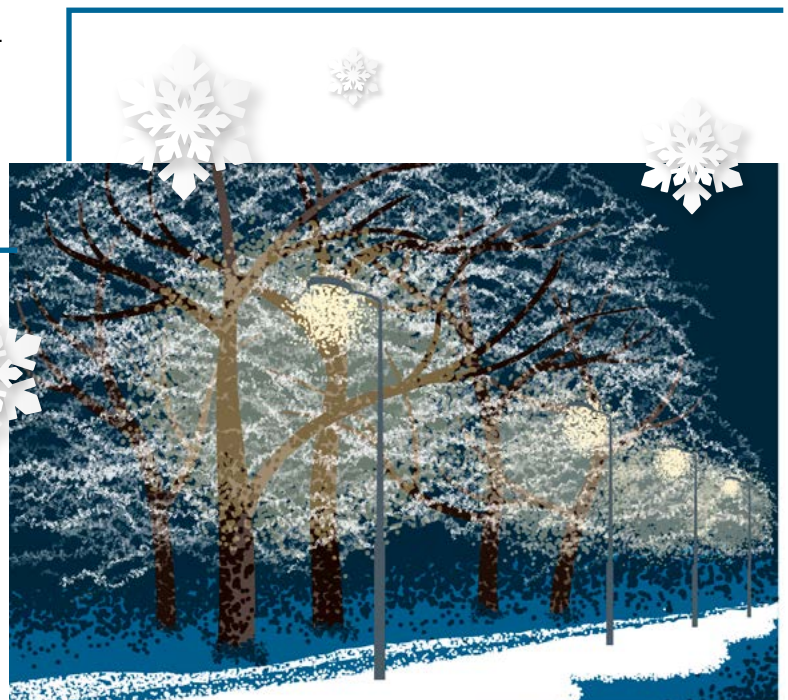
The following list of emergency contact information resources can help you be prepared to protect your home and your loved ones in critical weather events. The city is also prepared for snow and ice with seven four-by-four trucks and eight dump trucks that can be configured with plows and sanders to clear roadways.

Who to call:

- For life-threatening emergencies, call 911.
- To report flooding, blocked or hazardous streets and sidewalks, fallen trees, damaged traffic signs or signals, and similar problems, call the city's 24-hour response line at 425-452-7840. You can also report these issues on the MyBellevue app.
- To report a power outage, call Puget Sound Energy at 1-888-225-5773.

How to get emergency information:

- **Sign up for alerts** to receive email or text notification during emergencies or extreme weather at BellevueWA.gov/emergency-management. You can also subscribe to Alert King County at norcom.org.
- **Follow the city's social media sites:** Check your Nextdoor feed or the city's Facebook (Facebook.com/bellevuewashington) and Twitter (Twitter.com/bellevuewa) pages for the latest developments.
- **Website information:** During significant weather events, get information about local impacts, including the city's response, on our homepage at BellevueWA.gov or under the Emergencies and Extreme Weather page at BellevueWA.gov/emergencies. Street closures are posted at BellevueWA.gov/traffic-advisories, and information about the City's snow and ice response, driving tips and home safety tips can be found at BellevueWA.gov/snow-ice.
- **The city's "Winterize" weather preparedness guide** (BellevueWA.gov/sites/default/files/media/pdf_document/2019/Winter%20Prep%20Guide.pdf) has more helpful tips. The guide is translated in Chinese, Korean, Russian, Spanish, and Vietnamese and is available online at the city's Snow and Ice web page.



Boards and Commissions Meetings

As of April 1, no meetings are taking place at City Hall. Stay updated on meetings and cancellations: BellevueWA.gov

All meetings are conducted at City Hall unless otherwise noted. Agendas are subject to change. If a holiday occurs on a Monday, please check the updated calendar. Agendas can be downloaded from the city's web pages listed below. Meeting alerts are available through subscribing to the City's Special Meeting Notices page. BellevueWA.gov/city-government/departments/city-clerks-office/special-meeting-notice

Bellevue Diversity Advisory Network

(6 p.m., Bellevue City Hall) Last Tuesday of each month BellevueWA.gov/city-government/departments/city-managers-office/diversity/bellevue-diversity-advisory-network

East Bellevue Community Council (6:30 p.m., Lake Hills Clubhouse, 15230 Lake Hills Blvd) First Tuesday of each month BellevueWA.gov/city-government/east-bellevue-community-council

Arts Commission

(4:30 p.m., 1E-109) First Tuesday of each month BellevueWA.gov/city-government/departments/community-development/arts-and-culture/arts-commission

Environmental Services Commission

(6:30 p.m., 1E-113) First Thursday of each month BellevueWA.gov/city-government/departments/utilities/conservation-and-the-environment/environmental-services-commission

Planning Commission (6:30 p.m., 1E-113) Second and fourth Wednesday of each month BellevueWA.gov/city-government/departments/community-development/planning-commission

Transportation Commission

(6:30 p.m., 1E-113) Second Thursday of each month with fourth Thursday as needed. BellevueWA.gov/planning/transportation-commission

City Council Bellevue.Legistar.com/Calendar.aspx

Day	Scheduled Meeting(s)	Location	Public Comment Opportunity
First four Mondays of each Month, except August and December	6 p.m. Regular Meeting	Virtual Bellevue TV channel 21 and BTV YouTube channel youtube.com/user/BellevueWashington	Emails to Council are accepted at council@bellevuewa.gov at any time. Further opportunities for public comment are published on each Council agenda and can be found at bellevue.legistar.com/Calendar.aspx
August – first Monday only			
December – first and second Mondays only			

Human Services Commission

(6 p.m., 1E-113) First and third Tuesday of each month BellevueWA.gov/city-government/departments/city-clerks-office/boards-and-commissions/human-services-commission

LEOFF 1 Disability Board

(6 p.m., Room 1E-118) First Tuesday of each month BellevueWA.gov/city-government/departments/human-resources/retirees-former-employees/leoff-1-disability-board

Library Board

(5p.m., Lake Hills, Bellevue or Newport Way Library) Third Tuesday of each month BellevueWA.gov/city-government/departments/city-clerks-office/boards-and-commissions/library-board

Parks & Community Services Board

(6 p.m., 1E-113) Second Tuesday of each month BellevueWA.gov/city-government/departments/city-clerks-office/boards-and-commissions/parks-and-community-services-board

The Bellevue Network on Aging (BNOA)

8:30 a.m., North Bellevue Community Center 4063 148th Ave NE, Bellevue) First Thursday of each month BellevueWA.gov/bnoa

Special Events Committee

(8:30 a.m., 1E-112) Second Thursday of each month BellevueWA.gov/city-government/departments/city-clerks-office/boards-and-commissions/special-events-committee

Youth Link Board

(6 p.m., 1E-120) Second Wednesday of each month BellevueWA.gov/city-government/departments/city-clerks-office/boards-and-commissions/youth-link-board

Bellevue's Neighborhood Services Division offers a variety of programs and partnerships for neighborhood leaders and active residents. To learn more about citizen involvement opportunities and programs to enhance neighborhoods, please visit our website at: BellevueWA.gov/city-government/departments/community-development/neighborhoods or call 425-452-6836 or email: neighborhoodoutreach@bellevuewa.gov.

To subscribe to this newsletter, visit: BellevueWA.gov/neighborhood-news