



summer DAY CAMPS

MORE VALUE MORE VARIETY MORE FUN

2025

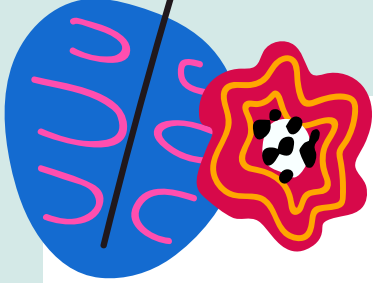
Bellevue resident registration begins March 31 at noon

Financial assistance available: see page 37 for more information

Non-Bellevue resident registration begins April 7

register.bellevuewa.gov | 425-452-6885





Connections

Bellevue City Council

Lynne Robinson, Mayor
Mo Malakoutian, Deputy Mayor
Dave Hamilton
Conrad Lee
Jared Nieuwenhuis
John Stokes
Janice Zahn

Parks & Community Services Board

Rowena Clima, Chair
Eileen Chou, Vice-Chair
Steve Chianglin
Paul Clark
Elizabeth Kronoff
Heather Trescases
Michelle Valverde

City of Bellevue Tax ID Number / 91-6007020

Every attempt has been made to ensure that information in this brochure is accurate at the time of publication. For the most up-to-date information on activity availability, pricing, dates, times, and location, please visit our online registration system at register.bellevuewa.gov.

Program availability, minimum and maximum enrollment, location, times, dates, and health screening requirements are all subject to change based on the latest guidance from local, state, and national public health authorities.

Questions or comments about this publication?

Contact Name, Department Marketing | Administrator, cwalker@bellevuewa.gov.

Equal Opportunity Statement

The City of Bellevue assures that no person shall on the grounds of race, color, national origin, or sex as provided by Title VI of the Civil Rights Act of 1964, and related statutes, be excluded from participation in, be denied the benefits of, or be otherwise subjected to discrimination under any City of Bellevue program or activity. Any person who believes his/her Title VI protection has been violated may file a complaint with the ADA/Title VI Administrator. For Title VI complaint forms and advice, please contact the ADA/Title VI Administrator at 425-452-6168.

Bellevue Parks & Community Services

PO Box 90012 | Bellevue, WA 98009-9012

The Bellevue School District does not sponsor nor endorse this event and/or information, nor does the district assume responsibility for it. In consideration of the privilege to distribute materials, the Bellevue School District will be held harmless from any cause of action filed in any court or administrative tribunal arising out of the distribution of these materials, including costs, attorney's fees and judgments or awards.

Human Services Commission

Jaskaran Singh Sarao, Chair
Chad Halsted, Vice-Chair
Someireh Amirfaiz
Benjamin Piper
Angela White
Major Mark Tarantino, Ex-Officio

Food & Refreshments

Programs listed in this brochure may include a food or beverage refreshment. Please contact your Program Area site for more information; phone numbers are available in this brochure. Food and beverage cost, when applicable, is included in the cost of the program.

Information

정보 सूचना  情報 資料

425-452-6800

సమాచారం Thông Tin
Información معلومات
اطلاعات Информация

Financial Assistance Available for Recreation Programs



Bellevue Parks & Community Services strives to make program opportunities available to all interested individuals who live in the boundaries of the city of Bellevue, regardless of income. We provide scholarships to those who might not otherwise be able to participate. Visit one of the locations listed at the bottom of this page to obtain a copy of the scholarship application form, visit bellevuewa.gov/connections to download a copy, or call 425-452-6885 and staff will be happy to mail you a copy of the form, free of charge.

贝尔维尤公园和社区服务中心致力于为居住在贝尔维尤市边界地区的所有对此计划感兴趣的人士提供机会，而不会考虑个人的收入情况。我们为可能无法参与的人士提供奖学金。您可前往本页面底部列出的其中任一地点，领取一份奖学金申请表副本，也可以浏览网站 bellevuewa.gov/connections 下载一份副本，或致电 425-452-6885，工作人员将乐意给您免费邮寄申请表副本。

Bellevue 公園和社區服務致力於為居住在 Bellevue 市邊界的所有感興趣的個人提供計劃機會，無論收入為何。我們為那些可能無法參加的人提供獎學金。請瀏覽本頁下方列出的地點之一以索取獎學金申請表的副本，請瀏覽 bellevuewa.gov/connections 下載副本，或致電 425-452-6885，工作人員將很樂意為您郵寄一份副本表格，無需額外費用。

Bellevue パーク&コミュニティサービスは、プログラムにご興味をお持ちのBellevue市民全員が収入の多寡によらずご利用いただけるよう努めています。参加が叶わない方には奨学金を支給しています。奨学金の申請用紙は、このページの下に記載の場所にて直接入手または bellevuewa.gov/connections からダウンロード、あるいは 425-452-6885 にお電話いただければ、職員が無料で用紙を郵送させていただきます。

벨뷰 공원 및 근린시설 서비스는 소득 수준과 관계없이 프로그램에 관심이 있는 벨뷰시 거주 시민이라면 누구든지 프로그램을 이용할 기회를 제공 하고자 노력합니다. 참여가 어려운 사람에게는 장학금을 제공합니다. 이 페이지 하단에 열거된 지점 중 한 곳을 방문하거나 bellevuewa.gov/connections를 방문하여 장학금 지원서 양식을 받을 수 있으며, 425-452-6885번으로 전화하면 직원이 지원서 양식을 무료로 발송해드립니다.

Bãi đỗ xe & Dịch vụ Cộng đồng Bellevue cố gắng tạo cơ hội tham gia chương trình cho tất cả những cá nhân quan tâm sống trong địa phận thành phố Bellevue, bất kể thu nhập. Chúng tôi cung cấp học bổng cho những cá nhân không thể tham gia. Truy cập một trong những địa điểm được liệt kê ở cuối trang này để lấy một bản sao của mẫu đơn đăng ký học bổng, truy cập bellevuewa.gov/connections để tải xuống một bản sao, hoặc gọi 425-452-6885 và nhân viên luôn sẵn lòng gửi cho quý vị một bản sao của mẫu đơn qua đường bưu điện hoàn toàn miễn phí.

Служба парков и коммунальных предприятий Белвью предлагает программы создания возможностей всем заинтересованным лицам, которые живут в пределах города Белвью, независимо от их дохода. Мы предоставляем стипендии тем, кто без этого не сможет стать участником программы. Получить бланк заявки на стипендию можно в одном из офисов, перечисленных в нижней части этой страницы. Чтобы скачать бланк заявки, зайдите на страницу bellevuewa.gov/connections или позвоните по номеру 425-452-6885, и сотрудники бесплатно отправят вам бланк по почте.

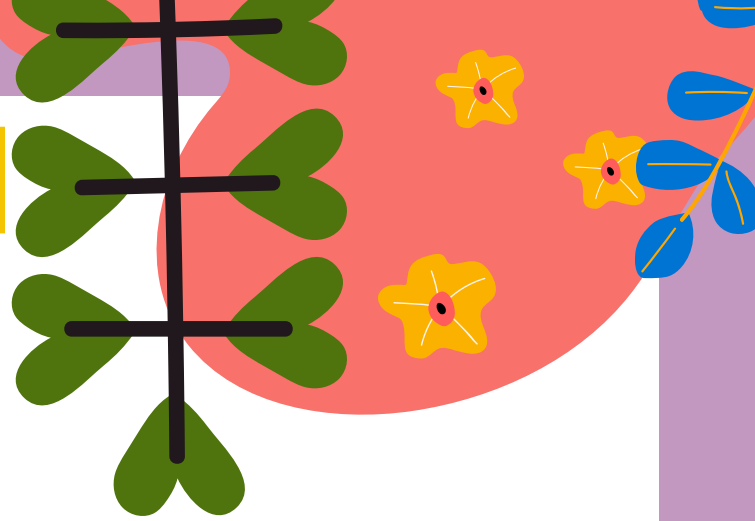
Parques y Servicios Comunitarios de Bellevue procura hacer que las oportunidades para participar en los programas estén disponibles a todos aquellos que estén interesados y vivan dentro de los límites de la ciudad de Bellevue, independientemente de sus ingresos. Otorgamos becas a los que no podrían participar de otra manera. Visite algunos de los locales listados al pie de esta página para obtener una copia del formulario de solicitud de becas, también puede ingresar a bellevuewa.gov/connections y descargar el formulario o puede llamar al 425-452-6885 y el personal felizmente le enviará una copia por correo electrónico sin costo.

Bellevue Aquatic Center 601 143rd Ave NE
Bellevue City Hall 450 110th Ave NE – ServiceFirst
Bellevue Youth Theatre 16501 NE 10th St
Crossroads Community Center 16000 NE 10th St
Highland Community Center 14224 Bel-Red Rd
Kelsey Creek Farm 410 130th Pl SE

Crossroads Mini City Hall 15600 NE 8th St #H9
North Bellevue Community Center
 4063 148th Ave NE
Northwest Arts Center 9825 NE 24th St
South Bellevue Community Center
 14509 SE Newport Way

Summer Day Camps

Please note: Not all camps meet every day of the week. Please visit BellevueWA.gov/connections to review complete program information, fee, and registration requirements. Bellevue resident registration begins March 31, 2025. Programs, pricing, and availability subject to change or cancellation. See brochure for more details.



Adaptive Summer Day Camp

Get ready for an action-packed adventure! This specialized day camp is designed for kids with intellectual disabilities and is bursting with exciting community outings, thrilling park excursions, engaging sports, interactive games, and creative sensory-based crafts. Every day is a new opportunity for fun, friendship, and exploration! No extended care is available. No online registrations. Only In-Person/E-mail/Fax/Mail registration is accepted.

\$260(R) \$315(N) Ages 4-15

8600	Mon-Fri	9:30 a.m.-3 p.m.	7/7-7/11
8601	Mon-Fri	9:30 a.m.-3 p.m.	7/14-7/18
8602	Mon-Fri	9:30 a.m.-3 p.m.	7/21-7/25
8003	Mon-Fri	9:30 a.m.-3 p.m.	7/28-8/1

\$260(R) \$315(N) Ages 16-21

8651	Mon-Fri	9:30 a.m.-3 p.m.	8/4-8/8
------	---------	------------------	---------

Bellevue Youth Theatre Day Camps

Theatre Games

Are you ready for a week full of fun, silliness, and creativity? Join us in Theater Games camp for an exciting experience where you'll explore the joy of theater through games, and an introduction to storytelling and improv.

\$175(R) \$210(N) Ages 7-11

8062	Tue-Fri	8 a.m.-12 p.m.	6/24-6/27
------	---------	----------------	-----------

Improv & Comedy Camp

Unleash your spontaneity and get ready for a week of laughter! Whether you're a seasoned performer or just looking to try something new, Improv and Comedy camp is here to help you learn to think on your feet and improve your skills and confidence in acting, storytelling, and improvisation.

\$175(R) \$210(N) Ages 12-19

8063	Tue-Fri	12-4 p.m.	6/24-6/27
------	---------	-----------	-----------

Musical Theatre Camp

Start spreading the news! Join us for Musical Theatre Workshop! Learn and perform a variety of songs spanning from the golden age to modern musicals! Over the two weeks we will explore the different styles, techniques, and songs that have graced the Broadway stage over the years. It will be two fun-filled weeks of singing, dancing, acting and all that jazz!! No camp on July 4.

\$540(R) \$650(N) Ages 7-13

8064	Mon-Fri	9:30 a.m.-3 p.m.	6/30-7/11
------	---------	------------------	-----------

Extended Care: Musical Theatre Camp

\$250(R) \$300(N) Ages 7-13

8065	Mon-Fi	8-9:30 a.m. & 3-5:30 p.m.	6/30-7/11
------	--------	---------------------------	-----------

"His mother let us know how much he was enjoying camp and how she started to see a new side of her son."

~ Bellevue Youth Theatre Camp

Playmaking

Are you interested in creating your own play? Curious how to write a script? Look no further than BYT's Playmaking camp! Campers will explore poetry, devising, and script writing as they work together to create an original performance piece. The camp will culminate in a showcase featuring the scenes created during the week.

\$300(R) \$360(N) Ages 8-13

8066 Mon-Fri 9:30 a.m.-3 p.m. 7/14-7/18

Extended Care: Playmaking

\$140(R) \$170(N) Ages 8-13

8067 Mon-Fri 8-9:30 a.m. & 3-5:30 p.m.
7/14-7/18

Tech to the Future

Come experience the magical behind the scenes world of technical theatre! Develop hands-on experience with tools in the scene shop, illuminate the stage with a crash course in lighting, discover the power of sound, construct props, and bring your artistic vision to life in the realms of costumes and makeup! This five-day camp will reveal the hidden backstage craft of theatre while giving you actual, factual, and practical skills.

\$300(R) \$360(N) Ages 12-19

8068 Mon-Fri 9:30 a.m.-3 p.m. 7/14-7/18

Thumbelina

Join the magical world of Thumbelina, the story of a tiny girl born from a flower. Follow her journey as she searches for happiness and belonging, encountering fantastical creatures and animals who present challenges along the way.

\$600(R) \$720(N) Ages 7-12

8069 Mon-Fri 9:30 a.m.-3 p.m. 7/21-8/1

Extended Care: Thumbelina

\$280(R) \$340(N) Ages 7-12

8070 Mon-Fri 8-9:30 a.m. & 3-5:30 p.m.
7/21-8/1

The Wind in the Willows

With the arrival of spring, the Mole family leaves their house for a new adventure! Join them as they travel the Wild Wood, meet friends like Badger and Toad, and take over Weasel hall!

\$600(R) \$720(N) Ages 7-12

8071 Mon-Fri 9:30 a.m.-3 p.m. 8/4-8/15

Extended Care: The Wind in the Willow

\$280(R) \$340(N) Ages 7-12

8072 Mon-Fri 8-9:30 a.m. & 3-5:30 p.m.
8/4-8/15

Crossroads Community Center GREAT Camp: Robin Hood

Come explore this original retelling of the legendary Robinhood and his merry band of friends. Join us as we go on adventures in Sherwood Forest, fighting injustice and helping the poor.

\$185(R) \$222(N) Ages 11-13

8073 Mon-Fri 9:30 a.m.-3 p.m. 8/18-8/22

The Princess and the Pea Drama Camp

Northwest Arts Center

A prince on a mission to find his queen, a princess on a journey to discover her true home, and a pea caught in the craziness of it all—join us to find out what happens when these worlds collide. This camp is led by the Bellevue Youth Theatre.

\$300(R) \$360(N) Ages 7-12

8074 Mon-Fri 10 a.m.-3:30 p.m. 8/18-8/22

Extended Care:

The Princess and the Pea Drama Camp

\$56(R) \$67.20(N)

8024 Mon-Fri 3 p.m.-5:30 p.m. 8/18-8/22

Dance Camps

South Bellevue Community Center

Youth Ballet Dance Camp

Students will gain coordination, confidence, and social skills as they learn the foundations of ballet and basic French vocabulary. In addition to ballet class each day, students will also play games, learn crafts and have playtime outside. This week-long course concludes with a performance for family and friends. Students of all genders are welcome.

\$180(R) \$216(N) Ages 5-7

7878 Tue-Fri 1-4 p.m. 6/24-6/27

Hippity Hop for Tots Dance Camp

ARE YOU READY TO BOOGIE? Children will learn the basics of hip-hop dancing with fun and upbeat music. You can expect your child to develop confidence, coordination, and HAVE FUN! In addition to Hip Hop class each day, students will also play games, learn crafts, and have playtime outside. This week-long course concludes with a performance for family and friends. Students of all genders are welcome.

\$225(R) \$270(N) Ages 3-4

7880 Mon-Fri 1-4 p.m. 7/21-7/25

Hip Hop Dance Camp

Time to POP, LOCK and BREAK! Children will learn basic hip hop moves and gain physical strength as they start the introduction to hip hop floorwork (coffee grinder moves, etc.). You can expect your child to develop confidence, coordination, and have fun; all while listening to some of their favorite music! In addition to Hip Hop class each day, students will also play games, learn crafts, and have playtime outside. This week-long course concludes with a performance for family and friends. Students of all genders are welcome.

\$225(R) \$270(N) Ages 5-7

7881 Mon-Fri 1-4 p.m. 8/4-8/8

Northwest Arts Center

Under the Sea Dance & Art Camp

Come "sea" how much fun it is at Mermaid Cove! Children will explore dance, art, music, and literature inspired by mermaids, pirates, and underwater creatures. Each day camp is split equally between dance and art. Camp culminates with an informal performance and gallery of student artwork.

\$180(R) \$216(N) Ages 5-8

8152 Tue-Fri 9:30 a.m.-12:30 p.m.

6/24-6/27

Outer Space Dance & Art Camp

This camp will be out of this world! Explore the wonders of the universe during five days of dance, art, storytelling and imaginative play. Each day camp is split equally between dance and art. Camp culminates with an informal performance and gallery of student artwork.

\$225(R) \$270(N) Ages 5-8

8154 Mon-Fri 9:30 a.m.-12:30 p.m.

8/11-8/15

City Opera Ballet Camps

Northwest Arts Center

The Prince and the Mermaid Ballet Camp

Children will dance their way to music and stories of favorite characters under the sea. Enjoy music and dance for all genders. Includes fun games, crafts and French for young dancers. Bring a snack and dress for dance

\$225(R) \$270(N) Ages 5-6

8009 Mon-Fri 9 a.m.-12 p.m. 7/7-7/11

Summer Classics Ballet Camp

Introductory ballet class with stories from classical ballets. Dancers will learn the early fundamentals of ballet. Includes French for young dancers. Bring a snack and dress for dance. Ballet shoes preferred.

\$225(R) \$270(N) Ages 7-11

8010 Mon-Fri 9 a.m.-12 p.m. 7/28-8/1

8011 Mon-Fri 9 a.m.-12 p.m. 8/25-8/29

Art Camps

CreArt Studioz Art Summer Camps

Northwest Arts Center

Sea World Wonders

Dive into the deep blue and unleash your creativity! Paint your own mini aquariums, create mold clay sea creatures, paint mesmerizing watercolor silhouettes, and build vibrant 3D coral reefs. Explore where stuffed creatures, painting, and 3D art come together for an ocean-inspired adventure!

\$495(R) \$594(N) Ages 5-9

8000 Mon-Fri 9 a.m.-3 p.m. 7/7-7/11

Extended Care: Sea World Wonders

\$56(R) \$67.20(N)

8018 Mon-Fri 3-5:30 p.m. 7/7-7/11

Circus & Carnival Creations

Step right up to a world of fun, art, and carnival-themed projects! Create a paper mache elephant, design a 3D circus, paint a canvas clown, make cotton candy puffy paint, and enjoy face painting fun. A festive, colorful week of creativity for all!

\$495(R) \$594(N) Ages 5-9

8001 Mon-Fri 9 a.m.-3 p.m. 7/14-7/18

Extended Care: Circus & Carnival Creations

\$56(R) \$67.20(N)

8019 Mon-Fri 3-5:30 p.m. 7/14-7/18

Global Art Adventures

Take a creative journey across the globe! Craft Russian nesting dolls, Dutch tulips, Egyptian scrolls, Turkish evil eyes, and Australian boomerangs. Plus, make your own passport and paper lanterns for a week of international art exploration!

\$495(R) \$594(N) Ages 5-9

8002 Mon-Fri 9 a.m.-3 p.m. 7/28-8/1

Extended Care: Global Art Adventures

\$56(R) \$67.20(N)

8021 Mon-Fri 3-5:30 p.m. 7/28-8/1

STEM-tastic Art Lab

Science meets art in this hands-on, experiment-packed camp! Make paper frisbees, build catapults, create pendulum paint masterpieces, and discover your inner mad scientist. Prepare for lots of cool projects and experiments!

\$495(R) \$594(N) Ages 5-9

8003 Mon-Fri 9 a.m.-3 p.m. 8/11-8/15

Extended care: STEM-tastic Art Lab

\$56(R) \$67.20(N)

8023 Mon-Fri 3-5:30 p.m. 8/11-8/15

Space Creators

Blast off into the universe with this out-of-this-world camp! Create space dioramas, paint galaxies, build paper mache rockets, and explore robot art. Get ready for a stellar summer of cosmic creativity!

\$495(R) \$594(N) Ages 5-9

8004 Mon-Fri 9 a.m.-3 p.m. 8/18-8/22

Extended Care: Space Creators

\$56(R) \$67.20(N)

8024 Mon-Fri 3-5:30 p.m. 8/18-8/22

Dream House Designers

Build your dream space with this architectural adventure! Whether it's a dollhouse, treehouse, spaceship, or secret base, kids will create their own fantasy worlds. Each day brings a new challenge and new creations, building a world of imagination step by step!

\$495(R) \$594(N) Ages 5-9

8005 Mon-Fri 9 a.m.-3 p.m. 8/25-8/29

Extended Care: Dream House Designers

\$56(R) \$67.20(N)

8025 Mon-Fri 3-5:30 p.m. 8/25-8/29



American Academy of Fine Mixed Media Art Camps

Northwest Arts Center

Jungle Art Journey Camp

Jump into the jungle! Make animal masks, weave jungle vines, draw tropical birds, sculpt clay elephants, and design rainforest dioramas. Campers will create adventure diaries and work on different creative projects using a range of art materials such as paint, paper mâché, clay and more.

\$384(R) \$460(N) Ages 7-12

8028 Tue-Fri 9 a.m.-3 p.m. 6/24-6/27

\$480(R) \$576(N) Ages 7-12

8033 Tue-Fri 9 a.m.-3 p.m. 8/4-8/8

Extended Care: Jungle Art Journey Camp

\$56(R) \$67.20(N)

8022 Mon-Fri 3-5:30 p.m. 8/4-8/8

Time Travel Artist Camp

Travel through time to different art periods! Students will use a variety of art materials to create cave paintings, design Egyptian jewelry, make Renaissance self-portraits, explore impressionist techniques, and try modern pop art. Each day will represent a different era. In this camp, children will explore and learn various art styles and other forms of expression through the ages, like traveling through a time machine.

\$480(R) \$576(N) Ages 7-12

8029 Mon-Fri 9 a.m.-3 p.m. 7/7-7/11

Extended Care: Time Travel Artist Camp

\$56(R) \$67.20(N)

8018 Mon-Fri 3-5:30 p.m. 7/7-7/11



Pet Paradise Art Camp

Join us for a week of critter creation! Create pet portraits, design dream pet homes, make clay paw prints, build birdhouses, and pet toys, and draw animal outlines. Campers will focus on three-dimensional clay building, carefully observing the differences between various types of animals, changes in details, and spatial structure. Perfect for the young artists who love animals!

\$480(R) \$576(N) Ages 7-12

8030 Mon-Fri 9 a.m.-3 p.m. 7/14-7/18

8034 Mon-Fri 9 a.m.-3 p.m. 8/11-8/15

Extended Care: Pet Paradise Art Camp

\$56(R) \$67.20(N)

8019 Mon-Fri 3-5:30 p.m. 7/14-7/18

8023 Mon-Fri 3-5:30 p.m. 8/11-8/15

Future City Creator Art Camp

Inspired by the innovative spirit of Seattle, children will imagine Seattle's future while learning about its present! Students will design a futuristic Space Needle variant, create recycled art inspired by the Fremont Troll, and build a miniature floating house like a houseboat on Lake Union. Whether it's a toy house, tree house, spaceship, or secret base, campers will create their ideal future city. Every day will bring new opportunities to build an imaginative world step-by-step!

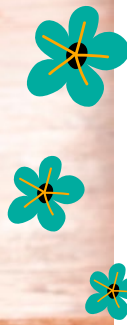
\$480(R) \$576(N) Ages 7-12

8031 Mon-Fri 9 a.m.-3 p.m. 7/21-7/25

Extended Care: Future City Creator Art Camp

\$56(R) \$67.20(N)

8020 Mon-Fri 3-5:30 p.m. 7/21-7/25



Learn from the Masters Painting Camp

Explore the secrets of legendary artists in this inspiring class. Children will explore Van Gogh's dynamic brushstrokes: use expressive brushstrokes and bright colors to create textured landscapes. Monet's Light and Reflection: try Impressionist techniques to capture the beauty of light and shadow. Picasso's Abstract Perspective: explore Cubism and reimagine ordinary objects with bold geometric shapes. Klimt's Golden Elegance: incorporate metallic elements into designs—Hokusai's Fluid Lines: practice techniques inspired by Japanese woodblock prints to depict movement and nature. Through hands-on projects, campers will recreate iconic styles while adding their creative flair. Each class introduces a master artist, combining history with skill-building to foster creativity, an appreciation of art history, and developing a personal artistic voice.

\$480(R) \$576(N) Ages 7-12

8032 Mon-Fri 9 a.m.-3 p.m. 7/28-8/1

8035 Mon-Fri 9 a.m.-3 p.m. 8/18-8/22

Extended Care:

Learn from the Masters Painting Camp

\$56(R) \$67.20(N)

8021 Mon-Fri 3-5:30 p.m. 7/28-8/1

8024 Mon-Fri 3-5:30 p.m. 8/18-8/22

Go Go with Van Gogh Art Camp

Fine arts on the farm, inspired by the Kelsey Creek Farm environment. This art focused camp is designed to celebrate individual interests of creative expressions through artistic guided exploration and outdoor play for increased joy. Multiple-media projects using colorful acrylics, watercolor with color theory exploration, sculpting with Model Magic, creating collages and oil pastels along with sketching on the farm. Dress for creative mess and bring your playful imagination. Instructor Diane Culhane is a renowned artist in the Pacific Northwest with a master's degree in art education and extensive teaching experience. \$20 supply fee due the first day of camp.

Kelsey Creek Farm

\$392(R) \$470(N) Ages 6-11

8106 Tue-Fri 9:30 a.m.-3 p.m. 6/24-6/27

8130 Mon-Thu 9:30 a.m.-3 p.m. 6/30-7/3

\$490(R) \$588(N) Ages 6-11

8131 Mon-Fri 9:30 a.m.-3 p.m. 7/7-7/11

8132 Mon-Fri 9:30 a.m.-3 p.m. 7/14-7/18

8133 Mon-Fri 9:30 a.m.-3 p.m. 8/4-8/8

Extended Care:

Go Go with Van Gogh Day Camp

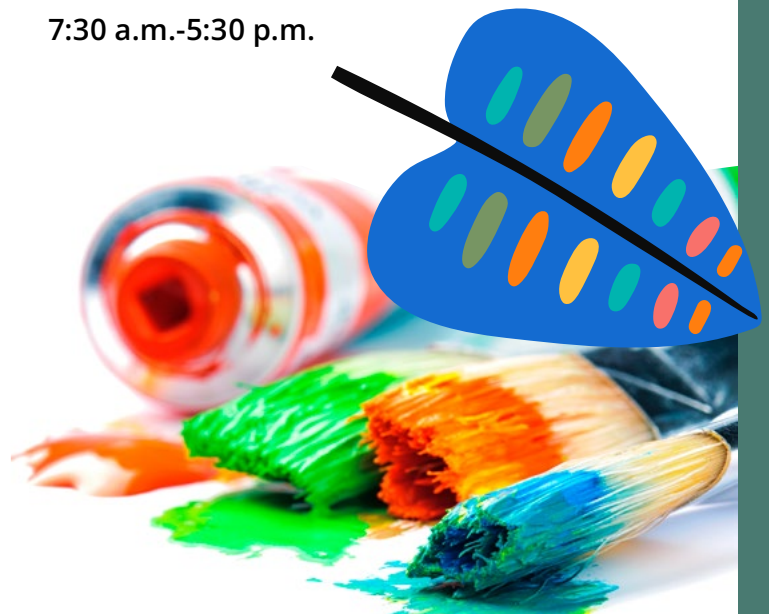
\$136(R) \$163(N)

7:30 a.m.-5:30 p.m.

Week of June 24-27 and June 30-July 3

\$109(R) \$131(N)

7:30 a.m.-5:30 p.m.



Cartooniversity

Join professional cartoonist Jeff Johnson for a unique opportunity for kids of all skill levels to explore the art of cartooning in an encouraging, positive classroom environment at Robinswood Park. A series of fun, challenging projects showcase multiple areas of study including faces, bodies, character development, layout, perspective, lettering and much more. The emphasis is on developing each student's own style. All materials provided. Come join the fun!

Robinswood Community Park

\$425(R) \$510(N) Ages 9-14

7977 Mon-Fri 10 a.m.-3 p.m. 8/11-8/15

7978 Mon-Fri 10 a.m.-3 p.m. 8/18-8/22

Cooking Camps

Froglegs Culinary Academy

Froglegs develops important life skills that campers can use throughout their lives. They learn how to follow recipes, measure ingredients and use kitchen tools safely. They also learn about nutrition and healthy eating habits, which can help them make better food choices in the future

Highland Community Center & Park

Animal Creation: Food inspired movies favorites

Welcome to Cartoon Party Cooking Camp, where kids ages 11-13 will explore the magic of popular cartoon movies through fun, hands-on cooking adventures! Each day, campers will dive into the world of a different movie, from making ratatouille to crafting adorable alien cupcakes, this camp combines the joy of cooking with the creativity of storytelling. Campers will develop essential kitchen skills, try new foods, and express themselves through colorful, imaginative recipes.

\$296(R) \$355(N) Ages 11-13

8150 Mon-Thu 9 a.m.-3 p.m. 7/7-7/10

Magical Wizarding World

Leave the real world behind and step into the enchanting kitchen of Hogwarts School of Culinary Magic! This week-long wizarding adventure is perfect for young witches and wizards eager to whip up magical meals and spellbinding treats inspired. Campers will don their aprons and practice their culinary charms as they craft dishes like pasties, cookies, and truffles.

\$296(R) \$355(N) Ages 11-13

8156 Mon-Thu 9 a.m.-3 p.m. 7/14-7/17

Little Italy

Step into the heart of Italy with our Little Italy Cooking Camp, where kids ages 11-13 will explore the vibrant flavors of Italian cuisine! From rolling out fresh pasta to crafting delicious pizzas and Italian desserts, campers will experience the magic of cooking like true Italian chefs.

\$296(R) \$355(N) Ages 11-13

8157 Mon-Thu 9 a.m.-3 p.m. 7/21-7/24

Passport De Cuisine

Pack your taste buds and get ready for an international adventure with Passport de Cuisine to explore the world through food and flavor! Each day, campers will "travel" to a new country, creating delicious dishes inspired by global cuisines. From rolling sushi in Japan to making tacos in Mexico and crafting pasta in Italy, kids will gain hands-on cooking experience in a fun and dynamic environment. Each day includes a full lunch and a sweet treat or snack, making this camp a flavorful journey kids will never forget!

\$296(R) \$355(N) Ages 11-13

8158 Mon-Thu 9 a.m.-3 p.m. 7/28-7/31





Ice Cream Kitchen Factory

Get ready for a sweet adventure where kids will roll up their sleeves and dive into the world of ice cream-inspired baking and creations! This hands-on camp lets campers become dessert engineers, designing and crafting all kinds of frozen treats, from ice cream sandwiches to ice cream cupcakes, while learning fun techniques along the way.

\$296(R) \$355(N) Ages 11-13

8159 Mon-Thu 9 a.m.-3 p.m. 8/4-8/7

Under the Big Top: Carnival of Cooking

Join the fun at a week-long summer cooking camp where kids will whip up a world of deliciously fun and colorful carnival treats! Each day, young chefs will explore the magic of circus-inspired cuisine, creating iconic fairground favorites like pepper & sausage rolls, pizza pretzels, and street tacos. This hands-on camp combines cooking with creativity, allowing kids to craft playful and whimsical dishes while learning basic kitchen skills.

\$296(R) \$355(N) Ages 11-13

8160 Mon-Thu 9 a.m.-3 p.m. 8/11-8/14

Kids Candy Camp Dipping Delights

Dip, dunk and drizzle away! Students will learn basic candy making and decorating techniques to embellish treats like pretzels, gummy bears, suckers and Oreos. Students will also learn to mold suckers, make candy bark, create candy dots and more. Each participant will leave with their unique treats and instructions for how to make these creations at home.

Northwest Arts Center

\$395(R) \$474(N) Ages 8-12

8006 Mon-Fri 12-3 p.m. 7/21-7/25

8007 Mon-Fri 12-3 p.m. 8/4-8/8

8008 Mon-Fri 12-3 p.m. 8/25-8/29

Extended Care:

Kids Candy Camp Dipping Delights

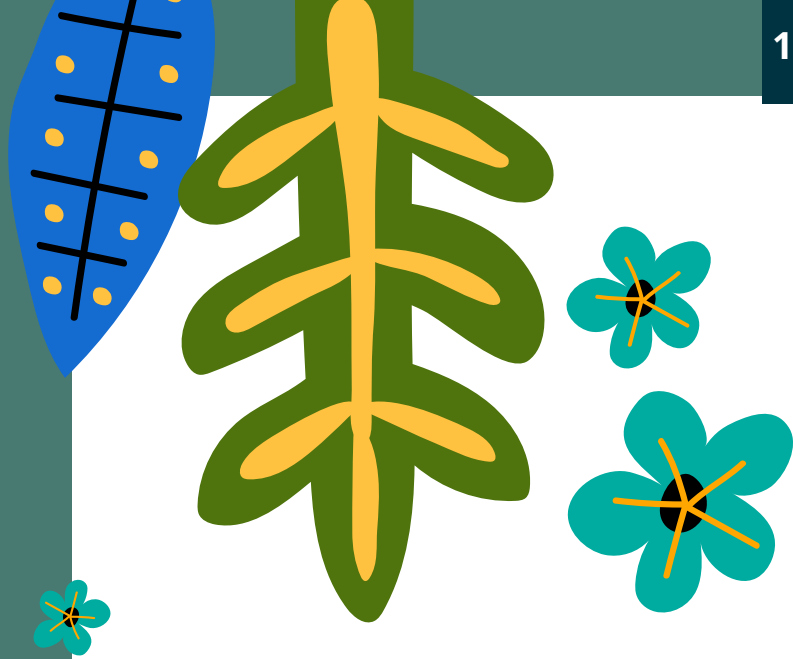
\$56(R) \$67.20(N)

8020 Mon-Fri 3-5:30 p.m. 7/21-7/25

8022 Mon-Fri 3-5:30 p.m. 8/4-8/8

8025 Mon-Fri 3-5:30 p.m. 8/25-8/29





Technology/ STEM Camps

AlphaBest Tech Camps

Calling all creative storytellers! Whether crafting immersive digital worlds or animating inanimate objects and pictures, these programs foster collaboration, creativity, and technical skill, providing campers with the tools and confidence to explore their passions and push the boundaries of their imagination!

Crossroads Community Center

Stop-Motion Basics

What child doesn't love animation? That's why we're giving our campers a chance to practice their animation skills. Each day, they will learn a new filmmaking technique designed to bring their stories to life through stop-motion animation. Our campers will create their very own movies using a wide variety of animation techniques and materials. With various props, our junior animators will create polished movies of rockets blasting off, monkeys swinging through the jungle, buzzing bees, and more!

\$280(R) \$326(N) Ages 6-10

7913 Mon-Fri 9 a.m.-3 p.m. 7/7-7/11

7914 Mon-Fri 9 a.m.-3 p.m. 7/28-8/1

Extended Care: Stop-Motion Basics

\$75(R) \$90(N) Ages 6-10

7925 Mon-Fri 3-5:30 p.m. 7/7-7/11

7920 Mon-Fri 3-5:30 p.m. 7/28-8/1

Bloxels Discovery: Video Game Design

Unlock your child's imagination as they dive into the world of video game creation! Campers will transform their ideas into thrilling top-down style games, inspired by legendary adventure quests. They'll design custom hero characters, create pixel art for enemies, rewards, and immersive game worlds, and bring their stories to life. Through hands-on learning, they'll explore the game design process, develop character profiles, and craft storyboards—just like real-life game designers. It's a creative and fun experience they'll never forget!

\$280(R) \$326(N) Ages 6-10

7915 Mon-Fri 9 a.m.-3 p.m. 7/14-7/18

7916 Mon-Fri 9 a.m.-3 p.m. 8/18-8/22

Extended Care:

Bloxels Discovery: Video Game Design

\$75(R) \$90(N) Ages 6-10

7921 Mon-Fri 3-5:30 p.m. 7/14-7/18

7922 Mon-Fri 3-5:30 p.m. 8/18-8/22

Coding and Robotics with Sphero

Campers are introduced to computer science principles and programming with fun and engaging coding robots, Sphero Indi, and BOLT. Through hands-on experience, all learners will use drag-and-drop block coding to navigate mazes, tell stories, and play robot games! Along the way, campers will grow their skills by learning how to control the robot's movement, behavior, and appearance, using programming methods like conditions, events, and variables (just to name a few).

\$280(R) \$326(N) Ages 6-10

7917 Mon-Fri 9 a.m.-3 p.m. 7/21-7/25

7918 Mon-Fri 9 a.m.-3 p.m. 8/11-8/15

Extended Care:

Coding and Robotics with Sphero

\$75(R) \$90(N) Ages 6-10

7924 Mon-Fri 3-5:30 p.m. 8/11-8/15

7923 Mon-Fri 3-5:30 p.m. 7/21-7/25

Going Places Day Camp

Based on the award-winning book *Going Places* by Peter and Paul Reynolds, campers enter a world of pure summer fun! As members of the *Going Places* Creative Problem-Solving Agency, teams tackle new problems and create solutions through a variety of engaging, hands-on, project-based activities. Each week brings a new story with new activities. Sign up for any combination of weeks.

Crossroads Community Center

The Great Race

Week One: The Great Race! Inspired by characters in the book *Going Places*, campers are immersed in real world challenges and hands-on fun. This week, campers join characters Maya and Rafael collaborating on the most amazing and imaginative go cart anyone has seen. We engineer unique racers, learn about propulsion, experiment with simple machines and design a challenging racecourse.

\$280(R) \$326(N) Ages 6-10

7903 Mon-Fri 9 a.m.-3 p.m. 7/7-7/11

Extended Care: The Great Race

\$75(R) \$90(N) Ages 6-10

7908 Mon-Fri 3-5:30 p.m. 7/7-7/11

Krazy Kinetic Parade

Week Two: Krazy Kinetic Parade! Inspired by characters in the book *Going Places*, campers are immersed in real world challenges and hands-on fun. This week, characters Maya and Rafael create the *Going Places* Creative Problem-Solving Agency, based at the Eureka Public Library. Their challenge this week is to make the Eureka Town parade spectacular and they do this by building a kinetic parade float.

\$280(R) \$326(N) Ages 6-10

7904 Mon-Fri 9 a.m.-3 p.m. 7/14-7/18

Extended Care: Krazy Kinetic Parade

\$75(R) \$90(N) Ages 6-10

7909 Mon-Fri 3-5:30 p.m. 7/14-7/18

Animal Adoption Match-up

Week Three: Animal Adoption Match-up! Inspired by characters in the book *Going Places*, campers are immersed in real world challenges and hands-on fun. This week, characters Rafael and Maya build an app that matches cute shelter animals to loving families. Campers use the power of imagination to merge the world of pet care with the tools of technology.

\$280(R) \$326(N) Ages 6-10

7905 Mon-Fri 9 a.m.-3 p.m. 7/21-7/25

Extended Care: Animal Adoption Match-up

\$75(R) \$90(N) Ages 6-10

7910 Mon-Fri 3-5:30 p.m. 7/21-7/25

Ocean Rescue

Week Four: Ocean Rescue! Inspired by characters in the book *Going Places*, campers are immersed in real world challenges and hands-on fun. In *Ocean Rescue*, Maya and Rafael invent the *PlasticSuperScooper3000* to extract hazardous trash from the ocean. Campers become marine biologists with a mission to protect the wildlife that lives in our oceans.

\$280(R) \$326(N) Ages 6-10

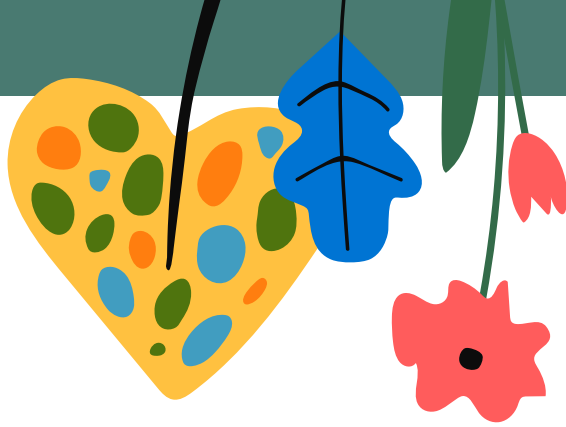
7906 Mon-Fri 9 a.m.-3 p.m. 7/28-8/1

Extended Care: Ocean Rescue

\$75(R) \$90(N) Ages 6-10

7911 Mon-Fri 3-5:30 p.m. 7/28-8/1





Take the Show on the Road

Week Five: Take the Show on the Road! Inspired by characters in the book *Going Places*, campers are immersed in real world challenges and hands-on fun. In this week, Rafael and Maya design a movable theatre to put on plays for the seniors around town. Campers write, direct, choreograph, stage and promote our own productions. We also design and build a scale theatrical set model like the pros. The week culminates in a theatrical presentation.

\$280(R) \$326(N) Ages 6-10

7907 Mon-Fri 9 a.m.-3 p.m. 8/4-8/8

Extended Care: Take the Show on the Road

\$75(R) \$90(N) Ages 6-10

7912 Mon-Fri 3-5:30 p.m. 8/4-8/8

Youth Tech Summer Half Day Camp

Youth Tech Inc. is an interactive computer camp that focuses on providing enrichment opportunities to students in the world of computers. This camp strives to create a positive learning community that encourages creativity, fun and academic excellence.

North Bellevue Community Center

Code Studio

This course offers younger students a fun, interactive look at coding. Students will create virtual apps and write their own programs that they can share with friends and family. This course makes learning to code fun and explores problem solving and programming logic. Students will have access to their accounts so the learning does not end at the door.

**Students should be able to read prior to taking this course.

\$156(R) \$172(N) Ages 6-12

8252 Mon-Thu 9:30 a.m.-12 p.m. 6/30-7/3

iGame Creators

Want to create video games? This is an introductory course for younger students who want to learn to build simple video games. This course combines the art of video game design and animation to create interactive characters that fly around the screen. Amaze your friends and family with your fun interactive games.

\$156(R) \$172(N) Ages 6-10

8254 Mon-Thu 1-3:30 p.m. 6/30-7/3

Movie Makers

This hands-on, interactive course will instruct students on the world of digital video design and production. Students will film, direct and edit their own digital video creations. Students enrolled in this course amaze their peers with green screen and special effects work.

\$156(R) \$172(N) Ages 9-15

8266 Mon-Thu 9 a.m.-12 p.m. 7/7-7/10

Video Games Design and Development

This course provides students with a fun interactive look at the world of video game design and development. Students enrolled in this camp will learn the basics of video game design and produce several different interactive video games to share with their friends and family.

\$156(R) \$172(N) Ages 10-17

8275 Mon-Thu 1-4 p.m. 7/7-7/10

8281 Mon-Thu 9 a.m.-12 p.m. 8/18-8/21

Animation

In this class students will learn the basics of animation and digital design. Students who enjoy going to various sites to see fun interactive animations will love this course. This class will utilize award winning animation software to develop fun, interactive animations that they can share with the world.

\$156(R) \$172(N) Ages 9-17

8287 Mon-Thu 9 a.m.-12 p.m. 7/21-7/24





Roblox™ Studio-Programming and game Development

Calling all ROBLOX users! Join in with millions of gamers and immerse yourself in your own 3D world! ROBLOX Studio is a 3D-based program that uses physics, LUA programming, and individual creativity to build a world around you, and your avatar. This course will guide students through concepts such as beginner physics, LUA programming, and game development. Students in this course will build and publish their game to share with friends and family!

\$156(R) \$172(N) Ages 9-15

8290 Mon-Thu 1-4 p.m. 7/21-7/24

8291 Mon-Thu 1-4 p.m. 8/11-8/14

Movie Makers

This hands-on, interactive course will instruct students on the world of digital video design and production. Students will film, direct and edit their own digital video creations. Students enrolled in this course will amaze their peers with green screen and special effects work learnt in this camp.

\$156(R) \$172(N) Ages 9-15

8284 Mon-Thu 1-4 p.m. 8/4-8/7

Web and App Design

This class offers students a hands-on look at the world of app and web design. This interactive course will instruct students about the world of design and development of websites and applications. Students will design their own website and app that they can share with their friends and family.

\$156(R) \$172(N) Ages 10-17

8292 Mon-Thu 9 a.m.-12 p.m. 8/4-8/7

Graphic Design

This class offers students a look at multiple areas of game design. From mobile game development to stand alone games. If you have a gamer you will not want to miss this class. Students will create multiple games that they can share with friends and family.

\$156(R) \$172(N) Ages 6-13

8294 Mon-Thu 9 a.m.-12 p.m. 8/11-8/14

Gamer's Paradise

This class offers students a look at multiple areas of game design. From mobile game development to stand alone games. If you have a gamer, you will not want to miss this class. Students will create multiple games that they can share with friends and family.

\$156(R) \$172(N) Ages 6-13

8293 Mon-Thu 1-4 p.m. 8/18-8/21

Incrediflix Motion & Movie Creation Day Camp

IncrediFlix Summer programs are all about the fun and excitement of making movies! Children will work in age-appropriate groups and go through all of the steps that Hollywood producers go through from "Action" to "That's a Wrap!" Programs focus on creativity, cooperation, and fun fun fun! Your child will be a real filmmaker and will have a movie they created to prove it.

North Bellevue Community Center

Live Action Flix

Discover your filmmaking talents! You don't have to be an actor to take part, as we'll guide you through the Hollywood process to create, direct, film, act, and more. You won't just make an incredible movie; you'll have the skills to make your own movies with friends. *\$35 production fee included in the price of camp. Flix will be emailed to families within a month after camp ends.

\$300(R) \$360(N) Ages 7-13

8225 Daily 9 a.m.-12 p.m. 6/23-6/27



Register online register.bellevuewa.gov



Mario Flix

"It's-a-me, Mario!" Stop Motion Movie making with your favorite Mario Characters. Create a Mario Movie full of fun to save the day or even be Bowser trying to take over the world! * \$35 Production fee included in the price of camp. Flix emailed within a month after camp ends.

\$300(R) \$360(N) Ages 7-13

8226 Daily 1-4 p.m. 6/23-6/27

Animation Flix

In this fast-paced class, you'll create up to five new stop motion movies using a different medium each day! Animate with ducks, with green screens, and, new for 2025, film with anime characters! * \$35 Production fee included in the price of camp. Flix will be emailed within a month after camp ends.

\$300(R) \$360(N) Ages 7-13

8232 Daily 9 a.m.-12 p.m. 7/14-7/18

Minecraft Movie Flix

Make a Minecraft stop motion movie with your favorite Minecraft characters! Working in age-appropriate groups, bring Steve, the creepers, and more to life. Students will write, storyboard, create sets out of construction paper, make their Minecraft blocks, film, animate some cool effects, and do voice-overs! *\$35 Production fee included in the price of camp. Flix will be emailed within a month after camp ends.

\$300(R) \$360(N) Ages 7-13

8235 Daily 1 p.m.-4 p.m. 7/14-7/18

Lego™ Flix

Bring Lego worlds to life! We provide Lego Bricks; you provide your imagination. Work in groups to create a Lego set with Lego characters for a stop-motion movie you'll storyboard, shoot, and add voice-over to. *\$35 Production fee is included in the price of camp. Flix to be emailed within a month after camp ends.

\$300(R) \$360(N) Ages 7-13

8237 Daily 9 a.m.-12 p.m. 7/28-8/1

Special Effects Movie Flix

Explosions, tornadoes, meteors, and even superpowers! In these high-intensity live action movies the special effects will blow your mind. In groups, you'll get to direct, act, and even select your special effects to include while filming. Make a movie that will surprise all your friends and family! *\$35 production fee is included in the price of camp. Flix will be emailed within a month after camp ends.

\$300(R) \$360(N) Ages 7-13

8236 Daily 1-4 p.m. 7/28-8/1

Adventure & Outdoor Camps

Summer Break Climbing Wall Camp

It's Summer Break and this camp is a great way for your child to have some indoor fun! Book your child's spot in this fun climbing adventure. Your child will get to experience bouldering, top rope climbing on our 33' climbing wall, explore hiking trails within Eastgate park, and learn climbing knots throughout the week.

South Bellevue Community Center

\$180(R) \$216(N) Ages 6-12

7885 Mon-Thu 9 a.m.-12 p.m. 6/30-7/3

7886 Mon-Thu 1-4 p.m. 6/30-7/3

7887 Mon-Fri 9 a.m.-12 p.m. 7/14-7/18

7888 Mon-Fri 1-4 p.m. 7/14-7/18

7889 Mon-Fri 9 a.m.-12 p.m. 7/28-8/1

7890 Mon-Fri 1-4 p.m. 7/28-8/1

7891 Mon-Fri 9 a.m.-12 p.m. 8/11-8/15

7892 Mon-Fri 1-4 p.m. 8/11-8/15



SBCC Summit Seekers Camp

Full Day summer camp that consists of activities at the outdoor challenge course, indoor at the SBCC Climbing Wall, and the zipline. The camp will be split up into AM & PM sessions, with one session taking place outside at the NWTB challenge Course and the other session inside at the SBCC Climbing Wall. When the team is ready to meet additional challenges together, we'll harness up for the Vertical Playpen and the High Course later in the week. During the Climbing session your child will get to experience bouldering, top rope climbing on our 33' climbing wall, explore hiking trails within Eastgate park, and learn climbing knots throughout the week.

\$450(R) \$540(N) Ages 12-18

7871	Tue-Fri	9 a.m.-4 p.m.	6/23-6/27
7872	Mon-Fri	9 a.m.-4 p.m.	7/7-7/11
7873	Mon-Fri	9 a.m.-4 p.m.	7/21-7/25
7874	Mon-Fri	9 a.m.-4 p.m.	8/4-8/8
7875	Mon-Fri	9 a.m.-4 p.m.	8/18-8/22

TRACKS Bike Camp

Join us for a week of morning bike rides. We will check out trails, parks and bike routes through Bellevue as well as practice rules of the road and basic bike maintenance. Campers are required to bring their own backpack, water bottle, snack and helmet. Campers must be proficient at riding and able to ride 3-5 miles prior to the start of camp. Bikes and/or helmets are available upon request, email tracks@bellevuewa.gov.

Lake Hills Community Park

\$145(R) \$174(N) Ages 10-13

8037	Mon-Fri	9-11:30 a.m.	7/14-7/18
8038	Mon-Fri	9-11:30 a.m.	7/21-7/25
8039	Mon-Fri	9-11:30 a.m.	7/28-8/1
8040	Mon-Fri	9-11:30 a.m.	8/4-8/8
8041	Mon-Fri	9-11:30 a.m.	8/11-8/15
8042	Mon-Fri	9-11:30 a.m.	8/18-8/22



TRACKS Hike and Swim Camp

Join us for a week of hikes and swimming in the lake! Campers will take short hikes before heading back to the beach park to swim. Campers are required to bring a backpack, water bottle, snack, sunscreen, swim clothes, and towel.

Chism Beach Park

\$160(R) \$192(N) Ages 10-13

8043	Mon-Fri	1-4 p.m.	7/14-7/18
8044	Mon-Fri	1-4 p.m.	7/21-7/25
8045	Mon-Fri	1-4 p.m.	8/4-8/8

TRACKS Outdoor Adventure Camp

Join us for a week of outdoor adventure activities. Each Day we will head out to a new site for hiking, canoeing, mountain biking, swimming, challenge course play and more! Campers must be able to ride 2-3 miles prior to the start of camp. Bikes and helmets can be provided upon request, email tracks@bellevuewa.gov.

Highland Community Center & Park

\$320-\$400(R) \$400-\$480(N) Ages 10-12

8046	Tue-Fri	9 a.m.-4 p.m.	6/24-6/27
NO CAMP MONDAY JUNE 23			
8048	Mon-Thu	9 a.m.-4 p.m.	6/30-7/3
NO CAMP FRIDAY JULY 4			
8051	Mon-Fri	9 a.m.-4 p.m.	7/7-7/11

Sports & Fitness Camps

DiscNW Ultimate Camp

Ultimate Disc is an exciting, non-contact team sport that mixes elements from sports such as soccer, basketball, and American football into one high energy game. Top-level Ultimate players require an unmatched degree of speed, stamina, and agility, yet the simplicity of the rules means it is easy and fun for newcomers to pick up. The sport is also self-refereed, emphasizing mutual respect between players. Register at www.discnw.org.

Robinswood Park – Fields

\$385(R) \$385(N) Ages 8-18

7449	Mon-Fri	9 a.m.-3 p.m.	7/14-7/18
7450	Mon-Fri	9 a.m.-3 p.m.	7/21-7/25
7451	Mon-Fri	9 a.m.-3 p.m.	8/11-8/15

Badminton Summer Camp

South Bellevue Community Center

This program is designed to provide basic skills needed to play badminton, including etiquette, terminology, rules, and scoring. The camp is designed to develop you to grow in the game and provide instruction on ways in which you can improve your skills. Recommended for new and beginner players. Players are encouraged to bring their own racquet, but one will be provided if necessary. All other equipment will be provided.

\$180(R) \$216(N) Ages 12-18

7876	Mon-Fri	1-4 p.m.	7/21-7/25
7877	Mon-Fri	1-4 p.m.	8/11-8/15

Skateboard Camps

Ready to Ride? Our newly upgraded indoor and outdoor skate parks are the perfect place to learn and shred, no matter your skill level. First-timers encouraged! From park safety to landing tricks, skate games, and a pizza-fueled end-of-week showcase party, our camp has it all. No gear? No problem! We've got skateboards and safety equipment ready for you, free of charge. We even recommend trying our camp before investing in your own gear.

Bellevue Skate Park

\$180(R) \$215(N) Ages 7-16

7986 Tue-Fri 9 a.m.-12 p.m. 6/24-6/27

\$200(R) \$240(N) Ages 7-16

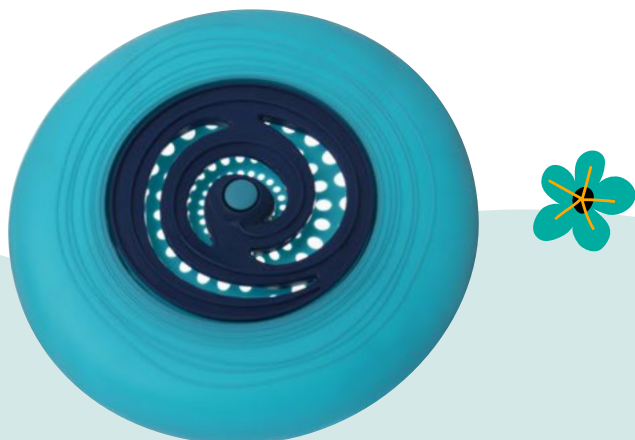
7987	Mon-Fri	9 a.m.-12 p.m.	7/7-7/11
7988	Mon-Fri	9 a.m.-12 p.m.	7/14-7/18
7989	Mon-Fri	9 a.m.-12 p.m.	7/21-7/24
7990	Mon-Fri	9 a.m.-12 p.m.	7/28-8/1
7991	Mon-Fri	9 a.m.-12 p.m.	8/11-8/15
7992	Mon-Fri	9 a.m.-12 p.m.	8/18-8/22

Junior Lifeguard Training

The Junior Lifeguard Program is designed to introduce young participants to the fundamentals of water safety, basic lifeguard skills, and beach rescues. Through a combination of hands-on training, physical fitness, and teamwork, participants will gain confidence in their swimming abilities while learning essential water rescue techniques, first aid, and emergency response procedures. This program provides a fun and educational environment for youth to develop leadership qualities and a strong sense of responsibility in a safe, supportive setting.

\$135(R) \$160(N) Ages 10-14

8016	Mon-Fri	12-4p.m.	7/21-7/25
8017	Mon-Fri	12-4p.m.	8/18-8/22



SBCC Pickleball Camps

SBCC Pickleball Camps are designed to provide basic skills needed to play pickleball, including etiquette, terminology, rules, and scoring. The camp is designed to develop you to grow in the game and provide instruction on ways in which you can improve your skills. Recommended for new and beginner players. Players are encouraged to bring their own paddle, but one will be provided if necessary. All other equipment will be provided.

\$180(R) \$216(N) Ages 12-18

7882 Mon-Thu 9 a.m.-12 p.m. 6/30-7/3

\$225(R) \$270(N) Ages 12-18

7884 Mon-Fri 9 a.m.-12 p.m. 8/25-8/29

Jet's Gymnastics Express Summer Camp

Big Flips

Learn gymnastics or improve your current gymnastics skills. Our grade-school camp provides basic to intermediate gymnastics training. Gymnastics builds strength, balance, coordination, flexibility and confidence, a valuable athletic foundation to excel in a variety of sports. Classes are noncompetitive and focus on general fitness, self-esteem, and fun. We accommodate all skill levels in our camps and teach to the ability level of each child.

Crossroads Community Center

\$250(R) \$300(N) Ages 6-12

7550 Mon-Fri 9:30 a.m.-12:30 p.m. 7/7-7/11

7551 Mon-Fri 1:30-4:30 p.m. 7/7-7/11

Highland Community Center & Park

\$250(R) \$300(N) Ages 6-12

8047 Mon-Fri 9:30 a.m.-12:30 p.m. 8/11-8/15

8049 Mon-Fri 1:30-4:30 p.m. 8/11-8/15

7552 Mon-Fri 9:30 a.m.-12:30 p.m. 8/18-8/22

7553 Mon-Fri 1:30-4:30 p.m. 8/18-8/22



Little Flips

South Bellevue Community Center

Learn gymnastics or improve your current gymnastics skills. Our pre-school camp provides basic to intermediate gymnastics training. Gymnastics builds strength, balance, coordination, flexibility and confidence, a valuable athletic foundation to excel in a variety of sports. Classes are noncompetitive and focus on general fitness, self-esteem, and fun. We accommodate all skill levels in our camps and teach to the ability level of each child.

\$235(R) \$282(N) Ages 3-5

7893 Mon-Fri 9 a.m.-12 p.m. 7/14-7/18

7894 Mon-Fri 1 p.m.-4 p.m. 7/14-7/18

7895 Mon-Fri 9 a.m.-12 p.m. 8/4-8/8

7896 Mon-Fri 1 p.m.-4 p.m. 8/4-8/8

i9 Sports Multi-Sport Camp

Baseball and Basketball

Swing away in the morning then shoot some jumpers in the afternoon! Baseball will take place in the AM, focusing on positioning, throwing, catching, fielding, and hitting. Basketball will be in the afternoon, focusing on dribbling, passing, triple-threat, offense, defense, and shooting. There will be daily skill-based drills with games to reinforce the skills. Group assignments will be determined by grades and skill levels. We'll see you on the field and the court!

Program fees start at \$319 and go up to \$409 depending on the length of camp and registration date. Register at i9sports.com.
Ages 8-9

Tyee Middle School Site

8245 Mon-Thu 9 a.m.-4 p.m. 6/30-7/3

Crossroads Park and Crossroads Community Center

8246 Mon-Fri 9 a.m.-4 p.m. 7/14-7/18

8247 Mon-Fri 9 a.m.-4 p.m. 8/11-8/15



Football and Basketball

Throw some touchdown passes and then drain some baskets in our Full-Day Multi-Sport camp! Flag football will take place in the morning, focusing on positioning, ball-handling, flag-pulling, passing, receiving, and running to build a solid base of fundamentals. Basketball will be in the afternoon right after lunch, focusing on dribbling, passing, triple-threat, offense, defense, and shooting. There will be daily skill-based drills with games to reinforce the skills. Group assignments will be determined by grades and skill levels. We'll see you on the field and the court!

Program fees start at \$319 and go up to \$409 depending on the length of camp and registration date. Register at i9sports.com.
Ages 8-11

Tyee Middle School Site

8245 Mon-Thu 9 a.m.-4 p.m. 6/30-7/3

Crossroads Park and Crossroads Community Center

8246 Mon-Fri 9 a.m.-4 p.m. 7/14-7/18

8247 Mon-Fri 9 a.m.-4 p.m. 8/11-8/15

Soccer and Basketball

Soccer will take place in the morning, focusing on positioning, ball-handling, passing, shooting, and teamwork. Basketball will be in the afternoon right after lunch, focusing on dribbling, passing, triple-threat, offense, defense, and shooting. There will be daily skill-based drills with games to reinforce the skills. Group assignments will be determined by grades and skill levels. We'll see you on the field and court!

Program fees start at \$319 and go up to \$409 depending on the length of camp and registration date. Register at i9sports.com.
Ages 8-11

Tyee Middle School Site

8245 Mon-Thu 9 a.m.-4 p.m. 6/30-7/3

Crossroads Park and Crossroads Community Center

8246 Mon-Fri 9 a.m.-4 p.m. 7/14-7/18

8247 Mon-Fri 9 a.m.-4 p.m. 8/11-8/15

Baseball

i9 Sports coaches work with players of all skill levels, focusing on positioning, throwing, catching, fielding, and hitting to build a solid foundation for a life-long love of the game. There will be daily skill-based drills with games to reinforce the skills. Group assignments will be determined by grades and skill levels. We'll see you on the field!

Program fees start at \$189 and go up to \$259 depending on the length of camp and registration date. Register at i9sports.com.
Ages 6-9

Tyee Middle School Site

8336 Mon-Thu 9 a.m.-12 p.m. 6/30-7/3

Crossroads Park

8338 Mon-Fri 9 a.m.-12 p.m. 7/14-7/18

8340 Mon-Fri 9 a.m.-12 p.m. 8/11-8/15

Flag Football

i9 Sports coaches work with players of all skill levels, focusing on positioning, ball-handling, flag-pulling, passing, receiving, and running. There will be daily skill-based drills with games to reinforce the skills. Group assignments will be determined by grades and skill levels. We'll see you on the field!

Program fees start at \$189 and go up to \$259 depending on the length of camp and registration date. Register at i9sports.com.
Ages 6-11

Tyee Middle School Site

8336 Mon-Thu 9 a.m.-12 p.m. 6/30-7/3

Crossroads Park

8338 Mon-Fri 9 a.m.-12 p.m. 7/14-7/18

8340 Mon-Fri 9 a.m.-12 p.m. 8/11-8/15



Multi-Sport Camp

Get your little ones started on the right foot in the sports world, even if they have the left shoe on it! This camp is an introduction to sports for your 4-5 year old and focuses on a combination of sports which may include flag football, soccer, t-ball and other fun games for young athletes. This camp is designed to help each child ignite a passion for sports while building their confidence, developing social connections, and having fun through learning and game play. Child **MUST** be fully potty-trained and able to communicate needs to instructors.

Program fees start at \$189 and go up to \$259 depending on the length of camp and registration date. Register at i9sports.com.
Ages 4-5

Tyee Middle School Site

8336 Mon-Thu 9 a.m.-12 p.m. 6/30-7/3

Crossroads Park

8338 Mon-Fri 9 a.m.-12 p.m. 7/14-7/18

8340 Mon-Fri 9 a.m.-12 p.m. 8/11-8/15

Soccer

Get your summer kicks with i9Sports! This morning soccer camp is perfect for any child who wants to work on their basic soccer fundamentals or just have some fun with their friends! Players of all talent levels are welcome, with instruction focused on fundamentals such as ball-handling, passing, shooting and teamwork to build their skill set and passion for the sport. There will be daily skill-based drills with games to reinforce the skills. Group assignments will be determined by grades and skill levels. We'll see you on the field!

Program fees start at \$189 and go up to \$259 depending on the length of camp and registration date. Register at i9sports.com.
Ages 6-11

8336 Mon-Thu 9 a.m.-12 p.m. 6/30-7/3

Crossroads Park

8338 Mon-Fri 9 a.m.-12 p.m. 7/14-7/18

8340 Mon-Fri 9 a.m.-12 p.m. 8/11-8/15

Basketball

i9 Sports coaches work with players of all skill levels in this afternoon-only basketball camp to develop fundamentals of the game, focusing on dribbling, passing, triple-threat, offense, defense, and shooting. There will be daily skill-based drills with games to reinforce the skills. Group assignments will be determined by grades and skill levels. We'll see you on the court!

Program fees start at \$189 and go up to \$259 depending on the length of camp and registration date. Register at i9sports.com.
Ages 8-11

8337 Mon-Thu 1-4 p.m. 6/30-7/3

Crossroads Park

8339 Mon-Fri 1-4 p.m. 7/14-7/18

8341 Mon-Fri 1-4 p.m. 8/11-8/15





UK International Soccer Camp

Learn the best of UK soccer through a coaching curriculum which develops the whole player, as an athlete and as a person, providing campers with the tools and self-belief to reach goals on and off the field. Daily schedule includes warm up, skills, fundamentals, small-sided games, technical sessions, and tournaments.

Newport Hills Community Park

\$166(R)	\$199(N)	Ages 7-13	
7437	Mon-Fri	12:30-3 p.m.	7/21-7/25
\$303(R)	\$364(N)	Ages 7-13	
7434	Mon-Fri	9 a.m.-3 p.m.	7/21-7/25
\$200(R)	\$240(N)	Ages 4-13	
7435	Mon-Fri	9 a.m.-12 p.m.	7/21-7/25

Robinswood Park – Fields

\$133(R)	\$160(N)	Ages 7-13	
7430	Tue-Fri	12:30-3 p.m.	6/24-6/27
\$243(R)	\$292(N)	Ages 7-13	
7428	Tue-Fri	9 a.m.-3 p.m.	6/24-6/27
\$160(R)	\$192(N)	Ages 4-13	
7429	Tue-Fri	9 a.m.-12 p.m.	6/24-6/27
\$166(R)	\$199(N)	Ages 7-13	
7433	Mon-Fri	12:30-3 p.m.	7/7-7/11
7441	Mon-Fri	12:30-3 p.m.	7/28-8/1
7445	Mon-Fri	12:30-3 p.m.	8/18-8/22
7448	Mon-Fri	12:30-3 p.m.	8/25-8/29
\$303(R)	\$364(N)	Ages 7-13	
7431	Mon-Fri	9 a.m.-3 p.m.	7/7-7/11
7438	Mon-Fri	9 a.m.-3 p.m.	7/28-8/1
7443	Mon-Fri	9 a.m.-3 p.m.	8/18-8/22
7446	Mon-Fri	9 a.m.-3 p.m.	8/25-8/29
\$200(R)	\$240(N)	Ages 4-13	
7432	Mon-Fri	9 a.m.-12 p.m.	7/7-7/11
7440	Mon-Fri	9 a.m.-12 p.m.	7/28-8/1
7444	Mon-Fri	9 a.m.-12 p.m.	8/18-8/22
7447	Mon-Fri	9 a.m.-12 p.m.	8/25-8/29

Tennis Camps

Robinswood Tennis Center

Youth Half Day Clinic

This clinic is appropriate for new players as well as players with some playing experience. Tennis fundamentals are covered as well as tennis related drills, games, and activities.

\$117(R)	\$117(N)	Ages 7-13	
7566	Mon-Thu	9 a.m.-12 p.m.	6/24-6/26
\$156(R)	\$156(N)	Ages 7-13	
7567	Mon-Thu	9 a.m.-12 p.m.	6/30-7/3
7569	Mon-Thu	9 a.m.-12 p.m.	7/7-7/10
7571	Mon-Thu	9 a.m.-12 p.m.	7/14-7/17
7572	Mon-Thu	9 a.m.-12 p.m.	7/21-7/24
7573	Mon-Thu	9 a.m.-12 p.m.	7/28-7/31
7574	Mon-Thu	9 a.m.-12 p.m.	8/4-8/7
7575	Mon-Thu	9 a.m.-12 p.m.	8/11-8/14
7576	Mon-Thu	9 a.m.-12 p.m.	8/18-8/21

TGA Tennis Camp

Get Ready to serve, volley, and rally while having fun with TGA! Our trained and verified coaches combine athletics, academics, and life lessons to create fun and engaging tennis programs. We include sport skill development, rules & etiquette lessons, physical activity, and a STEAM component that examines the concepts through the lens of the sport. Racket rentals are provided if needed.

Cherry Crest Park

\$207(R)	\$249(N)	Ages 5-12	
8268	Mo-Thu	1-3:30 p.m.	6/30-7/3
\$259(R)	\$311(N)	Ages 5-12	
8277	Mon-Fri	1-3:30 p.m.	7/28-8/1
8278	Mon-Fri	1-3:30 p.m.	8/4-8/8
8279	Mon-Fri	1-3:30 p.m.	7/14-7/18





Martial Arts

Crossroads Community Center

Kendo Junior Summer Camp

This camp is for students who are in Advanced Kendo. It is not a class for beginning students. Participants are required to be in armor and have equipment. Individuals with previous experience from other programs outside of Bellevue must contact the instructor for approval to enroll.

\$110(R) \$132(N) Ages 8-15

7554 Mon-Fri 9 a.m.-12 p.m. 8/11-8/15

Local Hoops Academy Basketball Camp

Participants will be coached on ball handling, shooting technique, defensive principles, decision making and other fundamentals. Work through a series of drills each day and finish with competitive game play. Come ready to work!

Tyee Middle School Site

\$204(R) \$245(N) Ages 6-12

7545 Tue-Fri 9 a.m.-12 p.m. 6/24-6/27

Crossroads Community Center

\$255(R) \$306(N) Ages 6-12

7546 Mon-Fri 9 a.m.-12 p.m. 7/21-7/25

7547 Mon-Fri 9 a.m.-12 p.m. 7/28-8/1

7548 Mon-Fri 9 a.m.-12 p.m. 8/4-8/8

7549 Mon-Fri 9 a.m.-12 p.m. 8/18-8/22

McVander Co-Ed Street Hockey Camp

No ice, no skating, and no hockey experience required! McVander Hockey provides a fun and safe space where participants of all skill-levels can learn about and explore the great game of hockey. Camp will take place on the basketball court. All participants receive a t-shirt and a hockey stick and ball to keep.

Tillicum Middle School Site

\$225(R) \$270(N) Ages 6-12

7659 Mon-Fri 9 a.m.-12 p.m. 7/14-7/18

7660 Mon-Fri 9 a.m.-12 p.m. 8/18-8/22

7661 Mon-Fri 9 a.m.-12 p.m. 8/25-8/29

Fun with Fitness Multi-Sport Camp

Are you ready to play! Learn ball sports, badminton, martial arts, running, yoga and other fun games, activities and sports. Enhance eye-hand coordination, agility, strength and flexibility. Develop confidence, teamwork and sportsmanship and build a foundation of basic sport and movement skills designed to bring joy to movement and fitness. Become empowered to discover the benefits of growing the mind body connection with a positive attitude toward lifelong fitness. This camp will be both indoor and outdoors.

Northwest Arts Center

\$225(R) \$270(N) Ages 7-11

8012 Mon-Fri 9:30 a.m.-12:30 p.m. 7/14-7/18

8013 Mon-Fri 9:30 a.m.-12:30 p.m. 7/21-7/25

Youth Sports Day Camp

Our multi-sport and water activity camps are designed to keep your child entertained, physically active, and learning all summer long. Trained staff will introduce and guide your camper through a variety of sports and games. Each week will include a field trip to a local attraction.

Tyee Middle School Site

Land & Water

Make sure you don't miss this week full of sports and water games. This is a TERRIFIC way to spend your hot summer days! Campers will be introduced to a variety of sports, including all of their favorites like soccer, baseball, and basketball, while also exploring new activities and water games. Campers will have the opportunity to make new life-long friends, be active, and explore new interests. There will also be a field trip to Wild Waves Theme Park during the week.

\$285(R) \$342(N) Ages 7-12

7558 Mon-Fri 9 a.m.-4 p.m. 7/7-7/11

Extended Care: Land & Water

\$70(R) \$84(N) Ages 7-12

7563 Mon-Fri 4-5:30 p.m. 7/7-7/11

Sports Galore

Are you the type of kid who likes to play EVERY sport possible? This camp is for you; basketball, baseball, flag-football, soccer, dodgeball, ultimate frisbee, golf...whatever the sport may be, our widely talented counselors will make sure you know how to play it and have a blast doing so! You won't want to miss this spectacular sports camp to keep you active all day! Enjoy a field trip on July 16 to watch the Seattle Storm take on the Golden State Valkyries at Climate Pledge Arena.

\$285(R) \$342(N) Ages 7-12

7555 Mon-Fri 9 a.m.-4 p.m. 7/14-7/18

Extended Care: Sports Galore

\$70(R) \$84(N) Ages 7-12

7564 Mon-Fri 4-5:30 p.m. 7/14-7/18

Sports Fanatics

Are you a sports fan or a Sports FANatic!? This fun-filled week of camp celebrates the wide world of sports by learning new skills and games and competing in round robin tournaments and challenge contests. Come learn a new sport, get better at an old one, recruit some new players for an old team, or just come make some new friends. Whatever it is that you're looking for, you'll find it in this camp! Campers will take a field trip on July 23 to see the Seattle Mariners take on the Milwaukee Brewers at T-Mobile Park.

\$285(R) \$342(N) Ages 7-12

7559 Mon-Fri 9 a.m.-4 p.m. 7/21-7/25

Extended Care: Sports Fanatics

\$70(R) \$84(N) Ages 7-12

7565 Mon-Fri 4-5:30 p.m. 7/21-7/25

Wet 'n Wild

Looking for something fun and new to do this summer? Grab a friend and get ready to cannonball into summer fun! Celebrate the sunny weather by getting outside, playing games and activities, enjoying the sunshine and playing in the water! Campers will compete in the morning with individual and team sports, and after lunch, cool off with water activities. You might even get to soak your camp counselors in a dunk tank. Who wouldn't want to be a part of that? Also, enjoy a field trip to Wild Waves Theme Park.

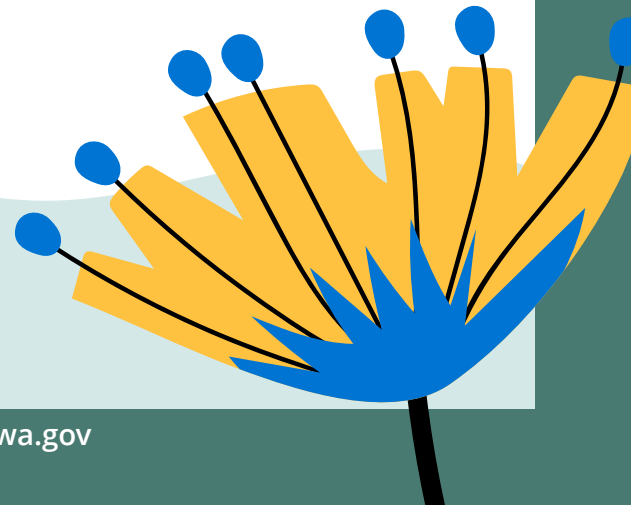
\$285(R) \$342(N) Ages 7-12

7560 Mon-Fri 9 a.m.-4 p.m. 7/28-8/1

Extended Care: Wet 'n Wild

\$70(R) \$84(N) Ages 7-12

7568 Mon-Fri 8-9 a.m. and 4-5:30 p.m. 7/28-8/1



Gamer's Delight

No matter what the sport or game may be, you will learn how to play it better or with a new twist! Don't know any good games, our camp counselors will teach you how to create them! Whether you want to learn a new game or just get better at something familiar like flag-football or basketball, this camp is just what you're looking for! Join in and keep the fun going all summer long! Camp will include a field trip to the Family Fun Center!

\$285(R) \$342(N) Ages 7-12

7561 Mon-Fri 9 a.m.-4 p.m. 8/4-8/8

Extended Care: Gamer's Delight

\$70(R) \$84(N) Ages 7-12

7570 Mon-Fri 8-9 a.m. and 4-5:30 p.m.
8/4-8/8



"It was very powerful to see the impact positive and encouraging counselors and campers can have on a child and their participation in camp."

~ Splash and Play Camp

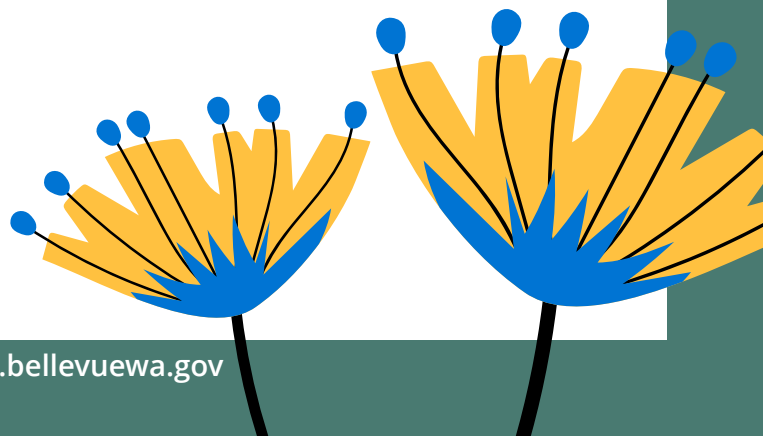


Splash and Play

Join us for a fun week of camp in the gym, on the field, and in the pool! Participants will receive sports-specific instruction in the morning and swim time in the afternoon. Each day, participants will practice and compete in different sports; basketball, flag football, soccer, kickball, pickleball, and much more; and then splash around in the pool. Participants will be transported to and from the Bellevue Aquatic Center for swimming each day. Daily pick up and drop off will be at Tyee Community Gym. There will also be a field trip to Wild Waves Theme Park.

\$315(R) \$378(N) Ages 10-13

7562 Mon-Fri 9 a.m.-4 p.m. 8/11-8/15





Kelsey Creek Farm Camps

Kelsey Creek Day Camp

Experience a summer full of adventure, creativity, and fun! Enjoy active outdoor games, hands-on activities, and engaging crafts while making new friends. Our trained staff provide a safe and supportive environment where kids can learn, play, and explore. Each week brings a variety of exciting experiences, ensuring no two days are the same. Get ready for a season of discovery, laughter, and unforgettable memories!

Kelsey Creek Farm

Out on the Farm

Get a hands-on experience with the rabbits and chickens as you discover what it takes to care for the smaller animals on the farm. Learn about a chicken's diet and how bunnies stay cool during the summer heat. Pitch in with farm chores like gathering fresh eggs and preparing special treats for the chickens. It's a fun and educational way to connect with the animals and learn about farm life!

\$253(R) \$304(N) Ages 4-6

8108 Tue-Fri 9:30 a.m.-3 p.m. 6/24-6/27

Extended Care

\$109(R) \$131(N) Ages 4-6

8223 Tue-Fri 7:30 a.m.-5:30 p.m. 6/24-6/27

Country Fair

Dive into a week filled with splashes and Campers, step back in time to experience the charm of an old-fashioned country fair! Work with your group to bake a delicious pie for a contest, try your hand at classic fair games, and unwind with a refreshing glass of lemonade. This four-day camp is filled with exciting activities and timeless fair traditions. From crafts to outdoor games, there's something special for everyone to enjoy!

\$253(R) \$304(N) Ages 4-6

8216 Mon-Thu 9:30 a.m.-3 p.m. 6/30-7/3

Extended Care

\$109(R) \$131(N) Ages 4-6

8224 Mon-Thu 7:30 a.m.-5:30 p.m. 6/30-7/3

Farm Science

Discover the wonders of the farm with a week of hands-on science and outdoor fun! Test your engineering skills by designing a contraption to protect a falling egg, explore the science behind why pigs love mud, and create a messy, muddy masterpiece for your own toy piglet. Each day is packed with farm-inspired experiments, exciting outdoor games, and creative activities that bring science to life in the most fun and unexpected ways!

\$316(R) \$379(N) Ages 4-6

8217 Mon-Fri 9:30 a.m.-3 p.m. 7/7-7/11

Extended Care

\$136(R) \$163(N) Ages 4-6

8227 Mon-Fri 7:30 a.m.-5:30 p.m. 7/7-7/11

"It's not often that one feels as a working parent that we are winning ;), but in the case of this camp, we really felt that the kids were experiencing the true joy of summer in the best way!"

~ Kelsey Creek Farm Camp

Game Time on the Farm

Campers will compete with their friends in barnyard relay races, tackle a western-style obstacle course, and join in a variety of exciting sports and games. From Minute-to-Win-It challenges to Farm Walks there's something for everyone to enjoy. As the week comes to a close, don't miss out on the excitement of the Farm Olympics, where all the skills and teamwork developed throughout the week come together in one grand field day. Get ready for a week of fun, friendly competition, and unforgettable memories!

\$316(R) \$379(N) Ages 4-6

8218 Mon-Fri 9:30 a.m.-3 p.m. 7/14-7/18

Extended Care

\$136(R) \$163(N) Ages 4-6

8228 Mon-Fri 7:30 a.m.-5:30 p.m. 7/14-7/18

Wildlife Beyond the Barnyard

Discover the wide variety of animals that call Kelsey Creek Farm Park home. Create your own pair of binoculars and set off to explore the nearby wetlands, forests, and creek sides in search of owls, blue herons, beavers, bobcats, and more! With hands-on activities, nature hikes, and games, campers will learn about local ecosystems and the creatures that thrive in them. It's a week full of outdoor adventure, discovery, and a deep dive into the fascinating world of wildlife!

\$316(R) \$379(N) Ages 4-6

8219 Mon-Fri 9:30 a.m.-3 p.m. 7/21-7/25

Extended Care:

\$136(R) \$163(N) Ages 4-6

8229 Mon-Fri 7:30 a.m.-5:30 p.m. 7/21-7/25

Country Cooking

Roll up your sleeves and bake classic goodies, make special treats for the ponies, and create fun crafts inspired by food. Campers will turn fresh milk from a certified Western Washington dairy into butter, then taste test it on crackers for a delicious treat. With plenty of hands-on activities, campers will explore the art of farm-to-table cooking and discover the joy of preparing their own homemade delights!

\$316(R) \$379(N) Ages 4-6

8220 Mon-Fri 9:30 a.m.-3 p.m. 7/28-8/1

Extended Care:

\$136(R) \$163(N) Ages 4-6

8230 Mon-Fri 7:30 a.m.-5:30 p.m. 7/28-8/1

Stay Cool

Ready to Ride? Our newly upgraded indoor and Beat the summer heat and learn how the Kelsey Creek Farm animals stay cool on those hot summer days by filling water toughs, making frozen treats for the rabbits, and watching the pig roll in the mud. Get ready for wet and refreshing fun as you cool off with outdoor water games, cooling activities, and plenty of water-themed crafts. This week will also include a field trip to Robinswood Park for a fun-filled water carnival.

\$316(R) \$379(N) Ages 4-6

8221 Mon-Fri 9:30 a.m.-3 p.m. 8/4-8/8

Extended Care:

\$136(R) \$163(N) Ages 4-6

8231 Mon-Fri 7:30 a.m.-5:30 p.m. 8/4-8/8



Young Farmers

Get ready to become a Young Farmer! Campers will help prepare the barn stalls for the animals by bringing in fresh bedding, take a goat on a walk, and create a tasty treat for the pig. They'll learn the differences between hay and straw, discover what animals need to stay healthy, and gain important skills for staying safe around large farm animals. It's a week full of farm fun, learning, and games!

\$316(R) \$379(N) Ages 4-6

8222 Mon-Fri 9:30 a.m.-3 p.m. 8/11-8/15

Extended Care:

\$136(R) \$163(N) Ages 4-6

8233 Mon-Fri 7:30 a.m.-5:30 p.m. 8/11-8/15

Nature Science

Discover the wonders of nature! This camp is designed for young minds to explore the environment through hands-on activities, fun experiments, and outdoor play. Campers will learn about plants, animals, and bugs through fun crafts and activities. Enjoy outdoor adventures like nature walks and scavenger hunts to explore the world around us.

\$316(R) \$379(N) Ages 4-6

8295 Mon-Fri 9:30 a.m.-3 p.m. 8/18-8/22

Extended Care:

\$136(R) \$163(N) Ages 4-6

8297 Mon-Fri 7:30 a.m.-5:30 p.m. 8/18-8/22

Farm Art

Unleash your creativity and explore the vibrant world of art! This week is dedicated to self-expression, imagination, and hands-on fun as campers dive into a variety of artistic mediums and techniques. Experiment with painting, drawing, and sculpting to create unique masterpieces. Participate in collaborative projects to build teamwork skills

\$316(R) \$379(N) Ages 4-6

8296 Mon-Fri 9:30 a.m.-3 p.m. 8/25-8/29

Extended Care:

\$136(R) \$163(N) Ages 4-6

8298 Mon-Fri 7:30 a.m.-5:30 p.m. 8/25-8/29

Crazy Chemworks

Your junior chemist will create surprising concoctions, break molecules with ease, and shake up a flask full of fun. They'll use the tools, safety procedures, and laboratory techniques of real chemists as they investigate solids, liquids, and gasses at the atomic level. Craft chemical combinations to create super-sticky-stuff and discover properties of light. Exploring the elements has never been so much fun!

\$331(R) \$397(N) Ages 6-11

8354 Mon-Fri 9am-12pm 8/18-8/22

Kid's Connection Day Camp

Experience a summer full of adventure, creativity, and fun! Enjoy active outdoor games, hands-on activities, and engaging crafts while making new friends. Our trained staff provide a safe and supportive environment where kids can learn, play, and explore. Each week brings a variety of exciting experiences, ensuring no two days are the same. Get ready for a season of discovery, laughter, and unforgettable memories!

Kelsey Creek Farm

Out on the Farm

Get a hands-on experience with the rabbits and chickens as you discover what it takes to care for the smaller animals on the farm. Learn about a chicken's diet and how bunnies stay cool during the summer heat. Pitch in with farm chores like gathering fresh eggs and preparing special treats for the chickens. It's a fun and educational way to connect with the animals and learn about farm life!

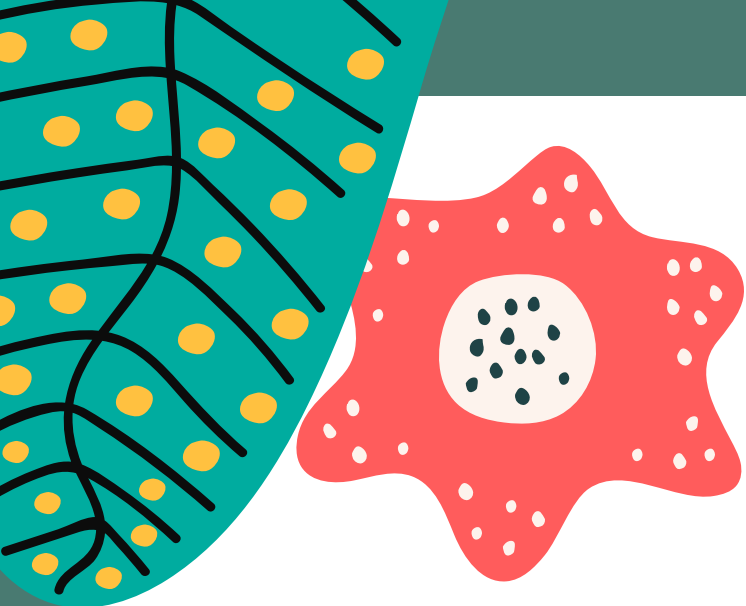
\$276(R) \$331(N) Ages 7-10

8234 Tue-Fri 9:30 a.m.-3:30 p.m. 6/24-6/27

Extended Care:

\$97(R) \$116(N) Ages 7-10

8301 Tue-Fri 7:30 a.m.-5:30 p.m. 6/24-6/27



Country Fair

Campers, step back in time to experience the charm of an old-fashioned country fair! Work with your group to bake a delicious pie for a contest, try your hand at classic fair games, and unwind with a refreshing glass of lemonade. This four-day camp is filled with exciting activities and timeless fair traditions. From crafts to outdoor games, there's something special for everyone to enjoy!

\$276(R) \$331(N) Ages 7-10

8238 Mon-Thu 9:30 a.m.-3:30 p.m. 6/30-7/3

Extended Care:

\$97(R) \$116(N) Ages 7-10

8309 Mon-Thu 7:30 a.m.-5:30 p.m. 6/30-7/3

Farm Science

Discover the wonders of the farm with a week of hands-on science and outdoor fun! Test your engineering skills by designing a contraption to protect a falling egg, explore the science behind why pigs love mud, and create a messy, muddy masterpiece for your own toy piglet. Each day is packed with farm-inspired experiments, exciting outdoor games, and creative activities that bring science to life in the most fun and unexpected ways!

\$345(R) \$414(N) Ages 7-10

8239 Mon-Fi 9:30 a.m.-3:30 p.m. 7/7-7/11

Extended Care:

\$121(R) \$145(N) Ages 7-10

8310 Mon-Fri 7:30 a.m.-5:30 p.m. 7/7-7/11

Game Time on the Farm

Join us for a fun week of camp in the gym, Campers will compete with their friends in barnyard relay races, tackle a western-style obstacle course, and join in a variety of exciting sports and games. From Minute-to-Win-It challenges to Farm Walks there's something for everyone to enjoy. As the week comes to a close, don't miss out on the excitement of the Farm Olympics, where all the skills and teamwork developed throughout the week come together in one grand field day. Get ready for a week of fun, friendly competition, and unforgettable memories!

\$345(R) \$414(N) Ages 7-10

8240 Mon-Fri 9:30 a.m.-3:30 p.m. 7/14-7/18

Extended Care:

\$121(R) \$145(N) Ages 7-10

8311 Mon-Fri 7:30 a.m.-5:30 p.m. 7/14-7/18

Wildlife Beyond the Barnyard

Discover the wide variety of animals that call Kelsey Creek Farm Park home. Create your own pair of binoculars and set off to explore the nearby wetlands, forests, and creek sides in search of owls, blue herons, beavers, bobcats, and more! With hands-on activities, nature hikes, and games, campers will learn about local ecosystems and the creatures that thrive in them. It's a week full of outdoor adventure, discovery, and a deep dive into the fascinating world of wildlife!

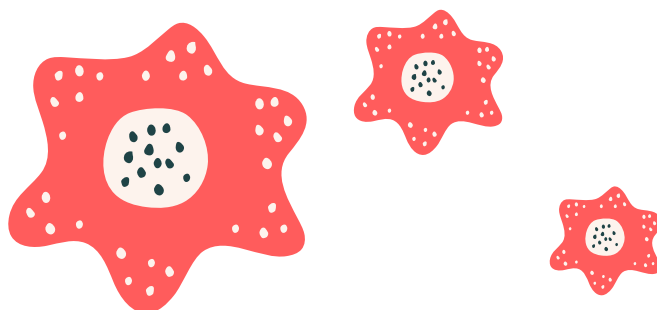
\$345(R) \$414(N) Ages 7-10

8241 Mon-Fri 9:30 a.m.-3:30 p.m. 7/21-7/25

Extended Care:

\$121(R) \$145(N) Ages 7-10

8312 Mon-Fri 7:30 a.m.-5:30 p.m. 7/21-7/25





Country Cooking

Roll up your sleeves and bake classic goodies, make special treats for the ponies, and create fun crafts inspired by food. Campers will turn fresh milk from a certified Western Washington dairy into butter, then taste test it on crackers for a delicious treat. With plenty of hands-on activities, campers will explore the art of farm-to-table cooking and discover the joy of preparing their own homemade delights!

\$345(R) \$414(N) Ages 7-10

8242 Mon-Fri 9:30 a.m.-3:30 p.m. 7/28-8/1

Extended Care:

\$121(R) \$145(N) Ages 7-10

8313 Mon-Fri 7:30 a.m.-5:30 p.m. 7/28-8/1

Stay Cool

Beat the summer heat and learn how the Kelsey Creek Farm animals stay cool on those hot summer days by filling water toughs, making frozen treats for the rabbits, and watching the pig roll in the mud. Get ready for wet and refreshing fun as you cool off with outdoor water games, cooling activities, and plenty of water-themed crafts. This week will also include a field trip to Robinswood Park for a fun-filled water carnival.

\$345(R) \$414(N) Ages 7-10

8243 Mon-Fri 9:30 a.m.-3:30 p.m. 8/4-8/8

Extended Care:

\$121(R) \$145(N) Ages 7-10

8314 Mon-Fri 7:30 a.m.-5:30 p.m. 8/4-8/8

Young Farmers

Get ready to become a Young Farmer! Campers will help prepare the barn stalls for the animals by bringing in fresh bedding, take a goat on a walk, and create a tasty treat for the pig. They'll learn the differences between hay and straw, discover what animals need to stay healthy, and gain important skills for staying safe around large farm animals. It's a week full of farm fun, learning, and games!

\$345(R) \$414(N) Ages 7-10

8244 Mon-Fri 9:30 a.m.-3:30 p.m. 8/11-8/15

Extended Care:

\$121(R) \$145(N) Ages 7-10

8315 Mon-Fri 7:30 a.m.-5:30 p.m. 8/11-8/15

Nature Science

Discover the wonders of nature! This camp is designed for young minds to explore the environment through hands-on activities, fun experiments, and outdoor play. Campers will learn about plants, animals, and bugs through fun crafts and activities. Enjoy outdoor adventures like nature walks and scavenger hunts to explore the world around us.

\$345(R) \$414(N) Ages 7-10

8299 Mon-Fri 9:30 a.m.-3:30 p.m. 8/18-8/22

Extended Care:

\$121(R) \$145(N) Ages 7-10

8316 Mon-Fri 7:30 a.m.-5:30 p.m. 8/18-8/22

Farm Art

Unleash your creativity and explore the vibrant world of art! This week is dedicated to self-expression, imagination, and hands-on fun as campers dive into a variety of artistic mediums and techniques. Experiment with painting, drawing, and sculpting to create unique masterpieces. Participate in collaborative projects to build teamwork skills.

\$345(R) \$414(N) Ages 7-10

8300 Mon-Fri 9:30 a.m.-3:30 p.m. 8/25-8/29

Extended Care:

\$121(R) \$145(N) Ages 7-10

8317 Mon-Fri 7:30 a.m.-5:30 p.m. 8/25-8/29



Farm Discoveries Day Camp

Join us at this hands-on adventure as you explore Kelsey Creek Farm. Children actively participate in animal care, making animal treats, working on barnyard chores, and learning fun facts about the farm. Time to play, arts and crafts, and circle time helps children develop important social skills. This special half-day camp will have your child loving our chickens, goats, cows, pigs, and rabbits. A pony ride will be included.

Kelsey Creek Farm

\$242(R)	\$290(N)	Ages 4-6	
8105	Tue-Fri	9 a.m.-1 p.m.	6/24-6/27
8353	Mon-Thu	9 a.m.-1 p.m.	6/30-7/3
\$303(R)	\$364(N)	Ages 4-6	
8124	Mon-Fri	9 a.m.-1 p.m.	7/7-7/11
8125	Mon-Fri	9 a.m.-1 p.m.	7/14-7/18
8126	Mon-Fri	9 a.m.-1 p.m.	7/21-7/25
8127	Mon-Fri	9 a.m.-1 p.m.	7/28-8/1
8128	Mon-Fri	9 a.m.-1 p.m.	8/4-8/8
8129	Mon-Fri	9 a.m.-1 p.m.	8/11-8/15
8323	Mon-Fri	9 a.m.-1 p.m.	8/18-8/22
8324	Mon-Fri	9 a.m.-1 p.m.	8/25-8/29

Farm Adventurers Camp

Spend a week exploring the world of farming! Activities will include animal interactions, agricultural education, and actual work experience for which your child will receive an official volunteer certificate. Participants will learn to work with various farm animals. They will create crafts, learn about the history of Seattle-area agriculture, and participate in farm chores.

Kelsey Creek Farm

\$154(R)	\$185(N)	Ages 11-13	
8104	Tue-Fri	9 a.m.-2:30 p.m.	6/24-6/27
8352	Mon-Thu	9 a.m.-2:30 p.m.	6/30-7/3
\$193(R)	\$232(N)	Ages 11-13	
8118	Mon-Fri	9 a.m.-2:30 p.m.	7/7-7/11
8119	Mon-Fri	9 a.m.-2:30 p.m.	7/14-7/18
8120	Mon-Fri	9 a.m.-2:30 p.m.	7/21-7/25
8121	Mon-Fri	9 a.m.-2:30 p.m.	7/28-8/1
8122	Mon-Fri	9 a.m.-2:30 p.m.	8/4-8/8
8123	Mon-Fri	9 a.m.-2:30 p.m.	8/11-8/15
8325	Mon-Fri	9 a.m.-2:30 p.m.	8/18-8/22
8326	Mon-Fri	9 a.m.-2:30 p.m.	8/25-8/29



Counselor in Training: Kelsey Creek Day Camp

Counselor in Training (CIT) volunteers work alongside Day Camp staff to create a positive, fun, and engaging experience for children in our day camp programs. As a CIT you will assist with leading activities, encourage participation, and build meaningful connections with campers through active involvement and support. You'll serve as a role model by demonstrating enthusiasm, kindness, and teamwork, helping to create an inclusive and welcoming environment where every camper feels valued. This volunteer opportunity is an excellent way to gain hands-on experience working with children and develop leadership and teamwork skills. CITs earn community service hours while contributing to a memorable and enriching camp experience for campers. Kelsey Creek Day Camp is a full day, general recreation day camp. Each week is centered around a different theme. CITs will gain experience working with 4-6 year olds.

Kelsey Creek Farm

\$15(R) \$18 (N) Ages 15-18

8107	Tue-Fri	8:30 a.m.-3:30 p.m.	6/24-6/27
8134	Mon-Thu	8:30 a.m.-3:30 p.m.	6/30-7/3
8135	Mon-Thu	8:30 a.m.-3:30 p.m.	7/7-7/11
8136	Mon-Thu	8:30 a.m.-3:30 p.m.	7/14-7/18
8137	Mon-Thu	8:30 a.m.-3:30 p.m.	7/21-7/25
8138	Mon-Thu	8:30 a.m.-3:30 p.m.	7/28-8/1
8139	Mon-Thu	8:30 a.m.-3:30 p.m.	8/4-8/8
8140	Mon-Thu	8:30 a.m.-3:30 p.m.	8/11-8/15
8321	Mon-Thu	8:30 a.m.-3:30 p.m.	8/18-8/22
8322	Mon-Thu	8:30 a.m.-3:30 p.m.	8/25-8/29

Counselor in Training: Kid's Connection Day Camp

Counselor in Training (CIT) volunteers work alongside Day Camp staff to create a positive, fun, and engaging experience for children in our day camp programs. As a CIT you will assist with leading activities, encourage participation, and build meaningful connections with campers through active involvement and support. You'll serve as a role model by demonstrating enthusiasm, kindness, and teamwork, helping to create an inclusive and welcoming environment where every camper feels valued. This volunteer opportunity is an excellent way to gain hands-on experience working with children and develop leadership and teamwork skills. CITs earn community service hours while contributing to a memorable and enriching camp experience for campers. Kid's Connection Day Camp is a full day, general recreation day camp. Each week is centered around a different theme. CITs will gain experience working with 7-10 year olds.

Kelsey Creek Farm

\$15(R) \$18 (N) Ages 15-18

8276	Tue-Fri	8:30 a.m.-3:30 p.m.	6/24-6/27
8280	Mon-Thu	8:30 a.m.-3:30 p.m.	6/30-7/3
8282	Mon-Thu	8:30 a.m.-3:30 p.m.	7/7-7/11
8320	Mon-Thu	8:30 a.m.-3:30 p.m.	7/14-7/18
8283	Mon-Thu	8:30 a.m.-3:30 p.m.	7/21-7/25
8285	Mon-Thu	8:30 a.m.-3:30 p.m.	7/28-8/1
8286	Mon-Thu	8:30 a.m.-3:30 p.m.	8/4-8/8
8288	Mon-Thu	8:30 a.m.-3:30 p.m.	8/11-8/15
8318	Mon-Thu	8:30 a.m.-3:30 p.m.	8/18-8/22
8319	Mon-Thu	8:30 a.m.-3:30 p.m.	8/25-8/29

Counselor in Training: Farm Discoveries Day Camp

Counselor in Training (CIT) volunteers work alongside Day Camp staff to create a positive, fun, and engaging experience for children in our day camp programs. As a CIT you will assist with leading activities, encourage participation, and build meaningful connections with campers through active involvement and support. You'll serve as a role model by demonstrating enthusiasm, kindness, and teamwork, helping to create an inclusive and welcoming environment where every camper feels valued. This volunteer opportunity is an excellent way to gain hands-on experience working with children and develop leadership and teamwork skills. CITs earn community service hours while contributing to a memorable and enriching camp experience for campers. Farm Discoveries camp is a half day, farm focused camp. CITs will work with 4-6 year olds.

Kelsey Creek Farm

\$15(R) \$18 (N) Ages 15-18

7979	Tue-Fri	8:30 a.m.-1:30 p.m.	6/24-6/27
8405	Mon-Thu	8:30 a.m.-1:30 p.m.	6/30-7/3
7980	Mon-Thu	8:30 a.m.-1:30 p.m.	7/7-7/11
7981	Mon-Thu	8:30 a.m.-1:30 p.m.	7/14-7/18
7982	Mon-Thu	8:30 a.m.-1:30 p.m.	7/21-7/25
7983	Mon-Thu	8:30 a.m.-1:30 p.m.	7/28-8/1
7984	Mon-Thu	8:30 a.m.-1:30 p.m.	8/4-8/8
7985	Mon-Thu	8:30 a.m.-1:30 p.m.	8/11-8/15
8327	Mon-Thu	8:30 a.m.-1:30 p.m.	8/18-8/22
8328	Mon-Thu	8:30 a.m.-1:30 p.m.	8/25-8/29

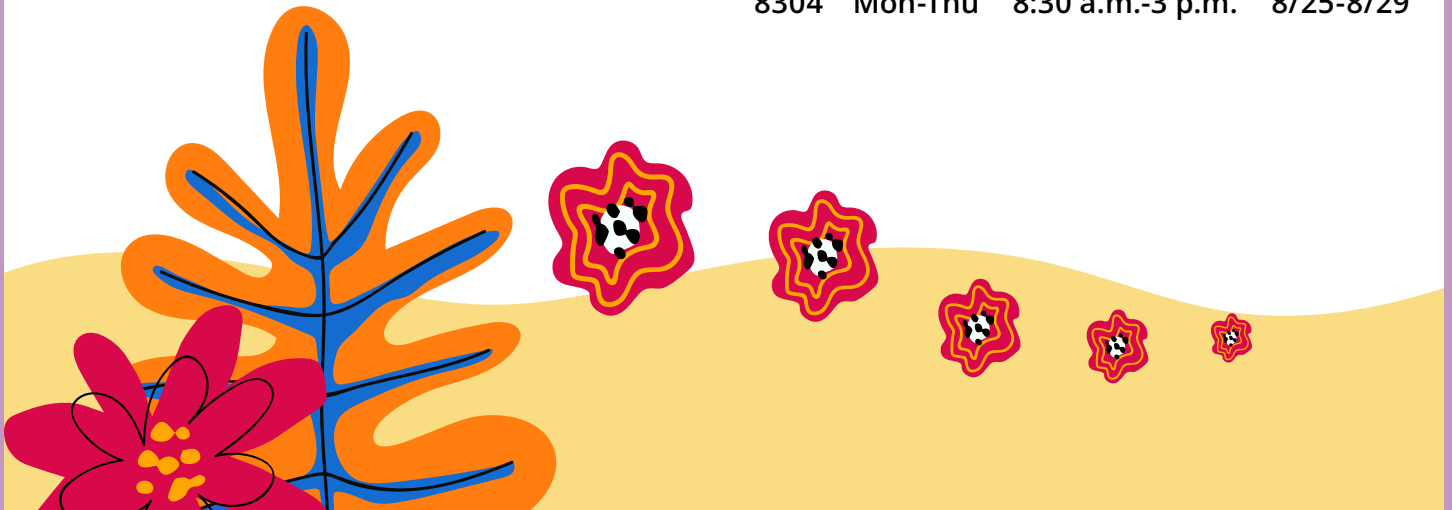
Counselor in Training: Farm Adventurers Camp

Counselor in Training (CIT) volunteers work alongside Day Camp staff to create a positive, fun, and engaging experience for children in our day camp programs. As a CIT you will assist with leading activities, encourage participation, and build meaningful connections with campers through active involvement and support. You'll serve as a role model by demonstrating enthusiasm, kindness, and teamwork, helping to create an inclusive and welcoming environment where every camper feels valued. This volunteer opportunity is an excellent way to gain hands-on experience working with children and develop leadership and teamwork skills. CITs earn community service hours while contributing to a memorable and enriching camp experience for campers. Farm Adventurers is a full day camp that explores topics including farm animals, nature, and art. CITs will gain experience work with 11-13 year olds.

Kelsey Creek Farm

\$15(R) \$18 (N) Ages 15-18

8103	Tue-Fri	8:30 a.m.-3 p.m.	6/24-6/27
8407	Mon-Thu	8:30 a.m.-3 p.m.	6/30-7/3
8112	Mon-Thu	8:30 a.m.-3 p.m.	7/7-7/11
8113	Mon-Thu	8:30 a.m.-3 p.m.	7/14-7/18
8114	Mon-Thu	8:30 a.m.-3 p.m.	7/21-7/25
8115	Mon-Thu	8:30 a.m.-3 p.m.	7/28-8/1
8116	Mon-Thu	8:30 a.m.-3 p.m.	8/4-8/8
8117	Mon-Thu	8:30 a.m.-3 p.m.	8/11-8/15
8303	Mon-Thu	8:30 a.m.-3 p.m.	8/18-8/22
8304	Mon-Thu	8:30 a.m.-3 p.m.	8/25-8/29



Veterinarian Camps

Future Canine Veterinarian Camp

Embrace your inner animal healer! Campers in this program will assume the role of veterinarians and learn how to care for dogs. Their education will cover topics like tick removal, comprehensive nose-to-tail exams, proper pet nutrition, suturing lacerations, and more.

Kelsey Creek Farm

\$350(R) \$420(N) Ages 6-8

8141 Mon-Fri 1-4 p.m. 7/21-7/25

Northwest Arts Center

\$350(R) \$420(N) Ages 7-10

9000 Mon-Fri 12:30-3:30 p.m. 7/7-7/11

Extended Care:

NWAC Future Canine Veterinarian Camp

\$56(R) \$67.20(N)

8018 Mon-Fri 3-5:30 p.m. 7/7-7/11

Future Equine Veterinarian Camp

Saddle up for an equine adventure! Aspiring veterinarians with a passion for horses will embark on a journey to become experts in horse care. They'll pledge to use real medical tools to ensure the well-being of their plush horse companions. Campers will delve into horse anatomy, riding styles, nutrition, and, upon successful completion, they'll ride off into the sunset with their diplomas. This program does not include a pony ride.

Kelsey Creek Farm

\$350(R) \$420(N) Ages 4-6

8142 Mon-Fri 9:15 a.m.-12:15 p.m. 7/21-7/25



Summer Teen Farm Program

Assist Kelsey Creek Farm staff in providing daily care to our farm animals. Help prepare meals for the animals, clean barn stalls, assist with other farm chores, and help bring the animals out to pasture for the day and back into the barn in the evening. Teens will learn responsible animal care, job skills, and independence while earning service hours for school.

Kelsey Creek Farm

\$40(R) \$48(N) Ages 14-18

8151 Tue-Fri 8:30 a.m.-4 p.m. 6/24-6/27

8153 Mon-Thu 8:30 a.m.-4 p.m. 6/30-7/3

\$50(R) \$60(N) Ages 14-18

8155 Mon-Fri 8:30 a.m.-4 p.m. 7/7-7/11

8162 Mon-Fri 8:30 a.m.-4 p.m. 7/14-7/18

8163 Mon-Fri 8:30 a.m.-4 p.m. 7/21-7/25

8164 Mon-Fri 8:30 a.m.-4 p.m. 7/28-8/1

8165 Mon-Fri 8:30 a.m.-4 p.m. 8/4-8/8

8166 Mon-Fri 8:30 a.m.-4 p.m. 8/11-8/15

8167 Mon-Fri 8:30 a.m.-4 p.m. 8/18-8/22

8168 Mon-Fri 8:30 a.m.-4 p.m. 8/25-8/29

Robinswood Day Camp

Give your child an unforgettable summer experience at Robinswood Park! Our camps offer active play, imaginative adventures, and creative fun in a safe and nurturing environment. With highly trained and caring staff leading the way, each week promises exciting new experiences and opportunities to learn and grow. From outdoor exploration to engaging crafts and games, there's something special for everyone to enjoy. Let the fun and friendships begin!

Robinswood Community Park

Animal Adventures

Does your child have a love for animals? Campers will explore the fascinating world of animals, from domestic pets to exotic wildlife. They'll learn about animal behavior, habitats, and what it takes to care for different species. Campers will participate in animal-themed games and create crafts inspired by their favorite animals. Celebrate our furry and feathery friends!

\$253(R) \$304(N) Ages 4-7

8253 Tue-Fri 9:30 a.m.-3 p.m. 6/24-6/27

Extended Care:

\$73(R) \$88(N) Ages 4-7

8329 Tue-Fri 8:30 a.m.-5 p.m. 6/24-6/27

Salty Seas

Ahoy, mateys! Set sail on a deep-sea adventure filled with games, crafts, and water activities. Dream up your own pirate's name, create an underwater scene with sand and seashells, and get active with a lively game of sharks and minnows. Campers will have a blast learning about sea creatures while making new friends along the way!

\$253(R) \$304(N) Ages 4-7

8255 Mon-Thu 9:30 a.m.-3 p.m. 6/30-7/3

Extended Care:

\$73(R) \$88(N) Ages 4-7

8330 Mon-Thu 8:30 a.m.-5 p.m. 6/30-7/3

Wonders of Science

Explore the wonders of science with hands-on fun! Build your own mini greenhouse and plant a seed, test your engineering skills with an egg drop challenge, and learn about germs and the importance of hand washing with interactive activities. Through hands-on experiments, campers will learn how science shapes the world around them!

\$316(R) \$379(N) Ages 4-7

8256 Mon-Fri 9:30 a.m.-3 p.m. 7/7-7/11

Extended Care:

\$91(R) \$109(N)

8331 Mon-Fri 8:30 a.m.-5 p.m. 7/7-7/11

Ready, Set...Go!

Join us for an action-packed week filled with fun games, sports, and endless excitement! Race in relays with new friends and test your skills on an obstacle course. Campers will also head to Kelsey Creek Farm for a camp-wide Olympics event. Sharpen your teamwork and sportsmanship with exciting challenges and group activities. It's a week of non-stop fun and friendly competition!

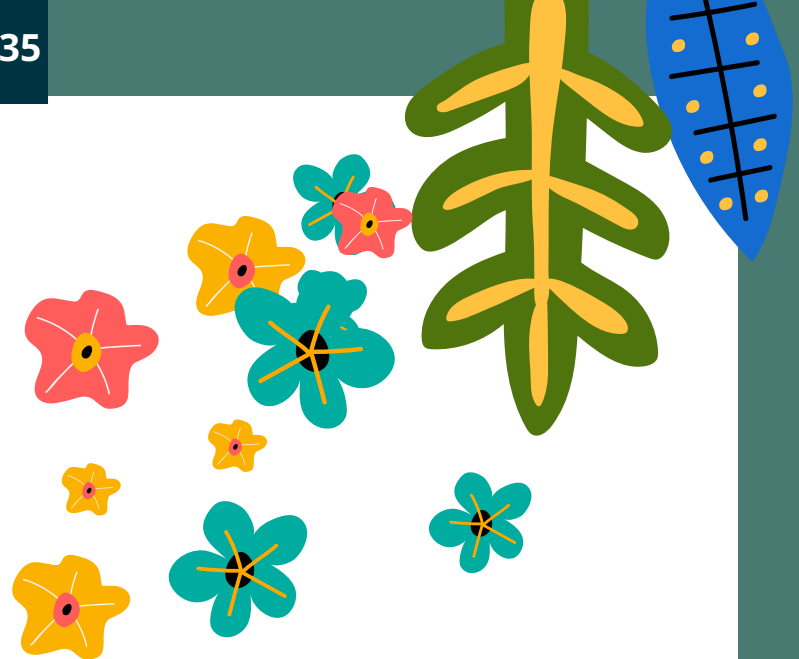
\$316(R) \$379(N) Ages 4-7

8259 Mon-Fri 9:30 a.m.-3 p.m. 7/14-7/18

Extended Care:

\$91(R) \$109(N)

8332 Mon-Fri 8:30 a.m.-5 p.m. 7/14-7/18



Out and About in Nature

Get ready to explore the great outdoors! Take a hike through Robinswood Park to discover unique plants, bugs, and animals in their natural habitats. Create your own binoculars and go for a nature scavenger hunt to spot tiny creatures and hidden treasures. Campers will spend time outside connecting with nature through hands-on activities, fun games, and outdoor adventures.

\$316(R) \$379(N) Ages 4-7

8264 Mon-Fri 9:30 a.m.-3 p.m. 7/21-7/25

Extended Care:

\$91(R) \$109(N)

8333 Mon-Fri 8:30 a.m.-5 p.m. 7/21-7/25

Camper's Kitchen

Put on your apron and get ready to satisfy your taste buds! Campers will whip up delicious treats in the Robinswood kitchen, including making butter from cream and tasting it with yummy crackers. You'll also get creative with food-inspired crafts and games. Plus, decorate your own cupcakes with colorful frostings and toppings to make them uniquely yours. It's a week full of fun and tasty treats!

\$316(R) \$379(N) Ages 4-7

8265 Mon-Fri 9:30 a.m.-3 p.m. 7/28-8/1

Extended Care:

\$91(R) \$109(N)

8334 Mon-Fri 8:30 a.m.-5 p.m. 7/28-8/1

Let's Get Wet

Dive into a week filled with splashes and creativity! Design your own sea creatures and sculpt them from clay, bringing your underwater imagination to life. Stay cool with exciting water games like sponge relays and water balloon tosses; run through sprinklers and enjoy the ultimate camp-wide water carnival. Get ready for endless laughs, excitement, and plenty of water fun!

\$316(R) \$379(N) Ages 4-7

8267 Mon-Fri 9:30 a.m.-3 p.m. 8/4-8/8

Extended Care:

\$91(R) \$109(N)

8335 Mon-Fri 8:30 a.m.-5 p.m. 8/4-8/8

Counselor in Training: Robinswood Day Camp

Counselor in Training (CIT) volunteers work alongside Day Camp staff to create a positive, fun, and engaging experience for children in our day camp programs. As a CIT you will assist with leading activities, encourage participation, and build meaningful connections with campers through active involvement and support. You'll serve as a role model by demonstrating enthusiasm, kindness, and teamwork, helping to create an inclusive and welcoming environment where every camper feels valued. This volunteer opportunity is an excellent way to gain hands-on experience working with children and develop leadership and teamwork skills. CITs earn community service hours while contributing to a memorable and enriching camp experience for campers. Robinswood Day Camp is a full day, general recreation day camp. Each week is centered around a different theme. CITs will gain experience working with 4-7 year olds.

\$15(R) \$18 (N) Ages 15-18

8111 Tue-Fri 9 a.m.-3:30 p.m. 6/24-6/27

8143 Mon-Thu 9 a.m.-3:30 p.m. 6/30-7/3

8145 Mon-Thu 9 a.m.-3:30 p.m. 7/7-7/11

8146 Mon-Thu 9 a.m.-3:30 p.m. 7/14-7/18

8147 Mon-Thu 9 a.m.-3:30 p.m. 7/21-7/25

8148 Mon-Thu 9 a.m.-3:30 p.m. 7/28-8/1

8149 Mon-Thu 9 a.m.-3:30 p.m. 8/4-8/8

Scholarship Application



INSTRUCTIONS

It is the policy of Bellevue Parks & Community Services to make program opportunities available to all interested people, regardless of income. We provide scholarships to those who might not otherwise be able to participate. Scholarships may be granted for the entire class fee or may provide a percentage discount, depending on individual circumstances. All information will remain confidential.

To be eligible for a scholarship **you must reside within the city limits of Bellevue** and meet the household size/yearly income requirements. Applicants meeting the eligibility guidelines are awarded up to \$500 per person, per calendar year. Eligible residents will be **required to provide proof of living in Bellevue City limits and income for entire household**. Household is defined as: those on the IRS Income Tax Return and/or all individuals living in your home that you care for (married or not).

Send only **copies** of your documents and **attach them to the completed application**.

Copies **will not be returned**.

Examples of supporting documents You only need **one** of each category:

1. Income verification with name on it

- tax return, W-2's for all income earners in the household 21 and older
- most recent month of pay stubs for all income earners in the household 21 and older
- KCHA 'Rent Calculation Worksheet'
- City of Bellevue Utility Rate reduction income qualification meets 75% rate for parks scholarship. If you wish to provide additional income verification, you may qualify for more scholarship
- Social Security Income
- DSHS food stamps–families of 4 or less automatically qualify for 75% under HUD and families of 5 or more automatically qualify for 50%

2. Proof of living within the Bellevue city limits

Supporting documents must have the name and address of service location on them

- Water, sewer, garbage bills
- PSE gas/electric bill
- Lease agreement or Mortgage paperwork

Scholarship applications must be approved prior to registration

A scholarship application alone does not register the participant, nor does it reserve space in a program.

Registrations are processed in the order received. You will be notified once your application for scholarship has been reviewed.

Scholarship Application and copies of supporting documents may be dropped off at any location listed below:

Bellevue Aquatic Center	601 143rd Avenue Northeast
Bellevue City Hall	450 110th Avenue Northeast - Service First
Bellevue Youth Theatre	16501 Northeast 10th Street
Crossroads Community Center	16000 Northeast 10th Street
Highland Community Center	14224 Bel-Red Road
Kelsey Creek Farm	410 130th Place Southeast
Mini City Hall Crossroads Mall	15600 Northeast 8th Street #H9
North Bellevue Community Center	4063 148th Avenue Northeast
Northwest Arts Center	9825 Northeast 24th Street
South Bellevue Community Center	14509 Southeast Newport Way

Scholarship Application



ATTACH COPIES OF SUPPORTING DOCUMENTS TO THE SCHOLARSHIP APPLICATION

Proof of living in Bellevue City limits and proof of income. See front page for list of examples.
Contact us at 425-452-6885 option #1 to inquire about other forms not listed.

LIST OF HOUSEHOLD MEMBERS

Parent/Guardian First Name	Parent/Guardian Last Name	Date of Birth	Gender
Household Member First Name	Household Member Last Name	Date of Birth	Gender

CONTACT INFORMATION

City	State	ZIP Code
Work Phone	Cell Phone	
Email Address	Primary School Location (optional)	
Household Size	Yearly Income Before Taxes \$	

QUALIFYING GUIDELINES FOR SCHOLARSHIP APPLICATION

Household Size	1	2	3	4	5	6	7	8
Full Scholarship	\$31,650	\$36,200	\$40,700	\$45,200	\$48,850	\$52,450	\$59,045	\$65,728
3/4 Scholarship	\$52,700	\$60,250	\$67,800	\$75,350	\$81,400	\$87,450	\$93,400	\$99,450
1/2 Scholarship	\$77,700	\$88,800	\$99,900	\$110,950	\$119,850	\$128,750	\$137,600	\$146,500

Example: If your family size is 2 and your household income is \$27,800 or less, you are eligible for a full scholarship.

I certify that the above information is correct to the best of my knowledge. I reside within the city limits of Bellevue, and I understand that any additional fees (i.e., supply fees, late fees for Day Camp Programs) are my own responsibility.

Signature: _____ Date: _____

If you are outside qualifying parameters and believe you qualify, please contact us by one of the following:

- **Email:** parksweb@bellevuewa.gov
- **Call:** 425-452-6885, option #1
- **In person** at one of the facilities listed on the front page

OFFICE USE ONLY

Date _____ Year _____	Approved By (print) _____ Initial _____
<input type="checkbox"/> Approved <input type="checkbox"/> Denied <input type="checkbox"/> Exception	Comments: _____
Circle One: 50% 75% 100%	_____ <input type="checkbox"/> COB <input type="checkbox"/> INC
Staff Name: _____	

Please detach and return with your signature

Registration & Payment Policies



Effective March 31, 2025

Every effort is made to ensure that the information in this catalog is accurate at the time of publication. Because policies, personnel, and funding can change, Bellevue Parks & Community Services reserves the right to add or withdraw programs and to amend, revise, or modify any provision, including - but not limited to - price, date, and location, printed in this brochure. You are encouraged to visit register.bellevuewa.gov for the most up-to-date information.

For programs meeting fewer than 10 hours per week, please see "General Recreation Programs" policies. Day Camp policies on this page do not apply to camps meeting fewer than 10 hours per week.

Food & Refreshments

Programs listed in this brochure may include a food or beverage refreshment. Please contact the Program Area site for more information; phone numbers are available in this brochure. Food and beverage cost, when applicable, is included in the cost of the program.

City of Bellevue Tax ID Number:

91-6007020

Registration Priority:

The City of Bellevue is committed to providing a wide range of recreation activities for Bellevue residents. Therefore, the City gives advance registration preference for those residing within the Bellevue city limits. Non-residents are welcome to take part in recreation programs on a space-available basis. Non-resident registrations are not accepted prior to the first day of non-resident registration. On this day, mailed and faxed registrations will be accepted, via phone at 425-452-6885, or online at register.bellevuewa.gov.

Due to an interlocal agreement with King County, all registrations for programs at South Bellevue Community Center are processed in the order received.

Registration Confirmation:

Registration receipts are mailed electronically after registration has been processed. Call 425-452-6885 to request a printed registration receipt.

Financial Assistance/Scholarships:

Financial assistance is available to qualifying residents who live within the Bellevue City limits. Applicants will be notified of the amount due for each registration after financial assistance application is processed. Please call 425-452-6885 or visit BellevueWA.gov/connections for information on applying for financial assistance.

Payment:

Payment is accepted in cash, gift certificates, checks, or Visa/MasterCard only. Payment for all programs except day camps is due in full at the time of registration. Please do not mail cash.

Financial assistance/Scholarship application is required prior to registration

General Recreation Programs: Payment is due at the time of registration.

Day Camps (camps meeting 10 hours or more per week): Each Day Camp requires a \$50 non-refundable registration fee, per participant, per camp, at the time of registration, and will be applied toward the final amount due. Non-Bellevue resident fee differential is also due at the time of registration. Payment in full of the remaining balance is due thirty (30) calendar days prior to the first day of each session. The city of Bellevue will automatically charge a credit card/debit card on file for balances due for day camps on the payment due date and, if necessary, adjust or reverse a payment for any entry made to an account or credit card in error.

Registration & Payment Policies



Credit Card:

Include credit card number and expiration date on registration form.

Checks:

All checks or drafts received by the city which are returned or dishonored by the drawee bank or other such depository shall be assessed a charge of \$15.00 (Administrative Order 53).

Refunds:

Classes cancelled by the city will result in a 100% refund of program fees. No refunds or credits will be issued on or after the first day of the program or camp. No refunds are available for programs \$10 or less.

General Recreation Programs: A refund is granted if the withdrawal is made at least seven (7) calendar days prior to the start of class, less a \$10 administrative fee per participant, per program.

Class withdrawals requested fewer than seven (7) calendar days prior to class will result in a refund of:

- Programs with fees \$20 or less: program fee, less \$10 administrative fee, per participant, per program.
- Programs with fees greater than \$20: 50% of the program fee, per participant, per program.

Day Camps (camps meeting 10 hours or more per week):

A refund is granted if the withdrawal is made at least fourteen (14) calendar days prior to the first day of class, less a \$50 non-refundable registration fee, per participant, per camp. Camp withdrawals requested less than fourteen (14) calendar days prior to camp will result in a refund of 50% of the program fee, per participant, per program. If you are interested in transferring to a different camp, please call 425-452-6885 for information on our transfer policy.

Resident Definition:

A resident is defined as anyone living within the jurisdictional boundary of the City of Bellevue as determined by City records. If you have any question as to whether you are within the jurisdictional boundary of the City of Bellevue, please contact the Development Services Department's Land Use Division at 425-452-4188.

The City of Bellevue prohibits sex discrimination in the operation or administration of community athletics programs for youth or adults. Third parties who receive leases or permits from the City of Bellevue for a community athletic program are also prohibited from discriminating on the basis of sex. In addition, the City of Bellevue does not discriminate on any other basis provided by Federal or State law. If you have questions or wish to file a complaint, contact Susan Freeburg at sfreeburg@bellevuewa.gov, or 425-452-4278.

Summer Day camp Registration Form



Please Print Clearly

Adult Last Name	First Name	Date of Birth	
Preferred Phone:	Phone Type:	Secondary Phone:	Phone Type:
Street Address			
City	State	Zip	Pronouns
E-mail-address-providing your email address, you will receive emailed receipts and updates from Bellevue Parks & Community Services.			
Work Phone			
Home Phone			

☐ Check here if you need to be contacted by staff to request a modification for a participant with a disability.

Child #1 Name:

Last	First	Date of Birth	Pronouns
Class No	Class Title	Fee	Use Scholarship?

Child #2 Name:

Last	First	Date of Birth	Pronouns
Class No	Class Title	Fee	Use Scholarship?

Emergency Contact

Contact Name _____ Relation _____

Phone Number _____ Email Address _____

Payment Details See Payment Policies for More Information.



Payment Method ☐ Check ☐ D.D.A. (send to Highland) ☐ Credit Card

Total Fee \$ _____ Card Number _____ Expiration date _____

**Waiver on reverse side of form must be signed prior to returning this form.
Registrations received without a signed waiver will not be processed.**



WAIVER OF LIABILITY/PHOTO & VIDEO RELEASE

PLEASE READ CAREFULLY

In consideration of myself and/or my child(ren) being allowed to use City of Bellevue Parks & Community Services facilities and/or participate in the city-sponsored activity(ies) identified herein, I ASSUME ANY AND ALL RISKS, INCLUDING RISK OF INJURY OR DEATH, associated with my or my child(ren)'s use of said facilities and/or participation in said activities. I further agree on behalf of myself, my heirs, executors, assigns, and personal representatives, to waive and RELEASE any and all rights and claims for damages, including attorney fees, I now, or may hereafter have, whether known or unknown, against the City of Bellevue and its officials, employees, and agents for any injuries suffered by me or my child(ren) in connection with the use of city facilities or participation in the city-sponsored activity(ies) identified herein. I acknowledge that I have carefully read this WAIVER OF LIABILITY and fully understand that I am waiving any right that I may have to bring a legal action or to assert a claim against the City of Bellevue in connection with the use of city facilities or participation in the city-sponsored activity stated below.

PHOTO/VIDEO RELEASE: I give my permission to have photos and/or video and audio recordings taken of me or my child(ren) during City of Bellevue activities and authorize the City of Bellevue to copyright, use, and publish the same. I understand I am waiving any right of privacy, compensation, copyright or other ownership right connected to the photo or recording. If you do not give permission to have photos and/or video and audio taken of you or your child(ren), please contact the main office at 425-452-6885 or parksweb@bellevuewa.gov.

I acknowledge that I have carefully read this WAIVER OF LIABILITY / RELEASE and fully understand that I am waiving any right that I may now or hereafter have to bring a legal action to assert any claim against the City of Bellevue in connection with my participation in this volunteer activity.

I accept the conditions printed above:

Participant's Parent/Guardian Signature

Date

Printed Name

Registration NOT VALID without signed waiver.

Mail completed form to: Bellevue Parks Registration; P.O. Box 90012; Bellevue, WA 98009-9012



Activities pages

K S A N D A L S F M U K T Q
X U T I T X H O T L K W R N
V N C C A M P F I R E I A S
P G P E M P N E Z P C K V D
R L R C B Q P S K H A T E H
N A J R M E S C M U B R L A
A S Y E A N L S H E L L K J
P S P A W L I C A J F C S K
O E I M A C A M P I N G U F
O S C B D U R O J Y X O N H
L F N J L X N B D M F B O K
Y L I A A T V A C A T I O N
N M C Z K B E A C H T D N E
G Y L R D I S B M P K A S G

TRAVEL

SUN

CAMPING

HOT

POOL

PICNIC

SANDALS

SUNGLASSES

HAT

BALL

PARK

ICE CREAM

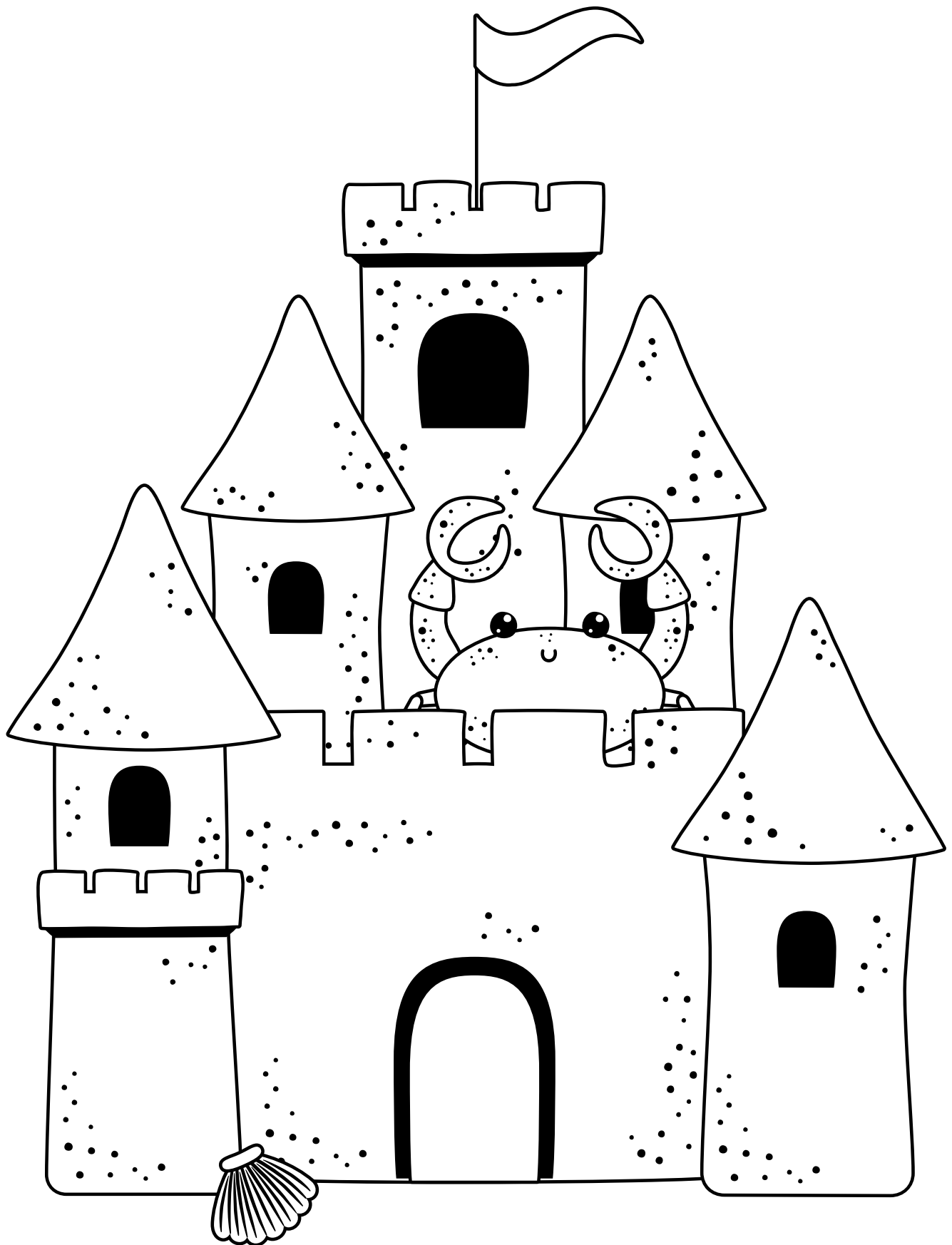
BEACH

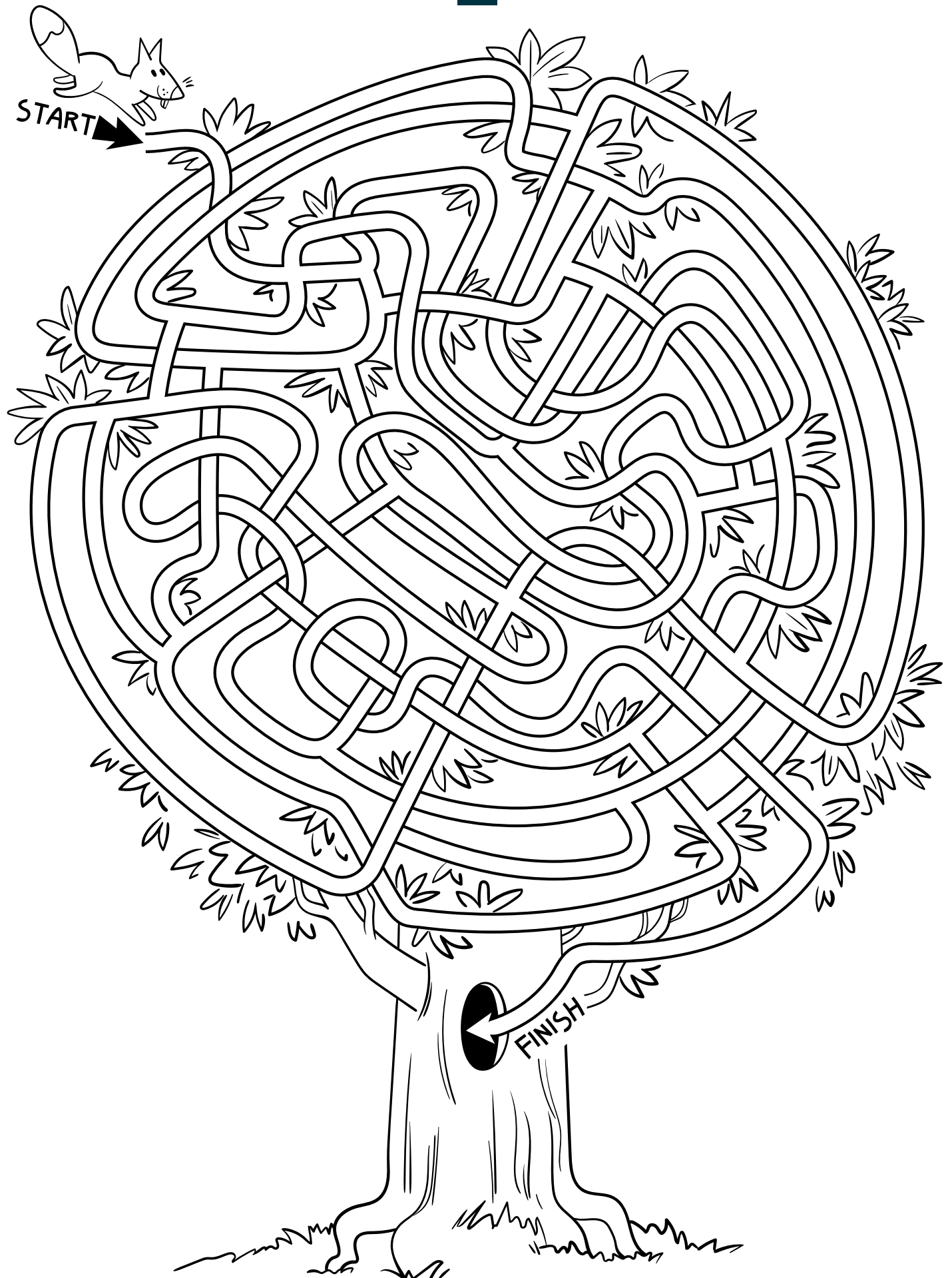
VACATION

CAMPFIRE

SHELL

Color me





Summer Camp Matrix

Camp Name	Ext'd Care	Ages	Page	Full or Partial Day	6/23-6/27	6/30-7/3	7/7-7/11	7/14-7/18	7/21-7/25	7/28-8/1	8/4-8/8	8/11-8/15	8/18-8/22	8/25-8/29
Adaptive Summer Day Camp		4-21	4	P			X	X	X	X	X			
Bellevue Youth Theatre Camps	X	7-19	4	P/F	X	X	X	X	X	X				
City Opera Ballet Camps		5-11	6	P			X			X				X
Youth Ballet Camp		5-7	6	P	X									
Hippity Hop for Tots Camp		3-4	6				X							
Under the Sea Dance & Art Camp		5-8	6	P	X									
Outer Space Dance & Art Camp		5-8	6	P								X		
CreArt Studioz Art Summer Camps	X	5-9	7	F			X	X		X		X		X
American Academy of Fine Mixed Media Art Camps	X	7-12	8	F	X		X	X	X	X	X	X	X	
Go Go with Van Gogh Art Camp	X	6-11	9	F	X	X	X	X			X			
Cartooniversity		9-14	10	P								X		X
Froglegs Culinary Academy		11-13	10	P			X	X	X	X	X	X		
Kids Candy Camp Dipping Delights		8-12	11	P					X		X			X
AlphaBest Tech Camps	X	6-10	12	F			X	X	X	X		X	X	
Going Places Day Camp	X	6-10	13	F			X	X	X	X	X			
Youth Tech Summer Camp		6-17	14	P		X	X		X		X	X	X	
Incrediflix Motion & Movie Creation Day Camp		7-13	15	P	X			X		X				
Climbing Wall Camp		6-12	16	P		X		X		X		X		
TRACKS Adventure Camp		10-13	17	P	X	X	X	X	X	X	X	X	X	
DiscNW Ultimate Camp		8-18	18	F				X	X			X		

Camp Name	Ext'd Care	Ages	Page	Full or Partial Day	6/23-6/27	6/30-7/3	7/7-7/11	7/14-7/18	7/21-7/25	7/28-8/1	8/4-8/8	8/11-8/15	8/18-8/22	8/25-8/29
Badminton Summer Camp		12-18	18	P					X			X		
Skateboard Camps		7-16	18	P	X			X	X	X	X	X	X	
Junior Lifeguard Training		10-14	18	P					X				X	
Pickleball Camps		12-18	19	P		X								X
Jet's Gymnastics Express Summer Camp		3-12	19	P			X	X			X	X	X	
i9 Sports Camp		6-11	19	F		X		X				X		
Tennis Camps		5-13	22	P		X	X	X	X	X	X	X	X	
Martial Arts		8-15	23	P								X		
Local Hoops Academy Basketball Camp		6-12	23	P		X			X	X	X	X		
McVander Co-Ed Street Hockey Camp		6-12	23	P				X	X					
Summit Seekers Camp		12-18	17	F		X	X		X		X		X	
Youth Sports Day Camp	X	7-12	24	F			X	X	X	X	X	X		
Fun with Fitness Multi-Sport Camp		7-11	23	P				X	X					
Kelsey Creek Day Camp	X	4-6	26	F		X	X	X	X	X	X	X	X	X
Summer Teen Farm Program		14-18	34	F		X	X	X	X	X	X	X	X	X
Farm Discoveries Day Camp		4-6	31	P		X	X	X	X	X	X	X	X	X
Farm Adventurers Camp		11-13	31	P		X	X	X	X	X	X	X		
Robinswood Day Camp	X	4-7	35	F		X	X	X	X	X	X			
Kid's Connection Day Camp	X	7-10	28	F		X	X	X	X	X	X	X	X	X
Counselor in Training		15-18	32, 33, 36	F		X	X	X	X	X	X	X	X	X
Veterinarian Camp		4-10	34	P					X					



For alternate formats, interpreters, or reasonable modification requests please phone at least 48 hours in advance 425-452-6885 (voice) or email parksweb@bellevuewa.gov. For complaints regarding modifications, contact the City of Bellevue ADA, Title VI, and Equal Opportunity Officer at ADATitleVI@bellevuewa.gov.

PCS-25-34253

