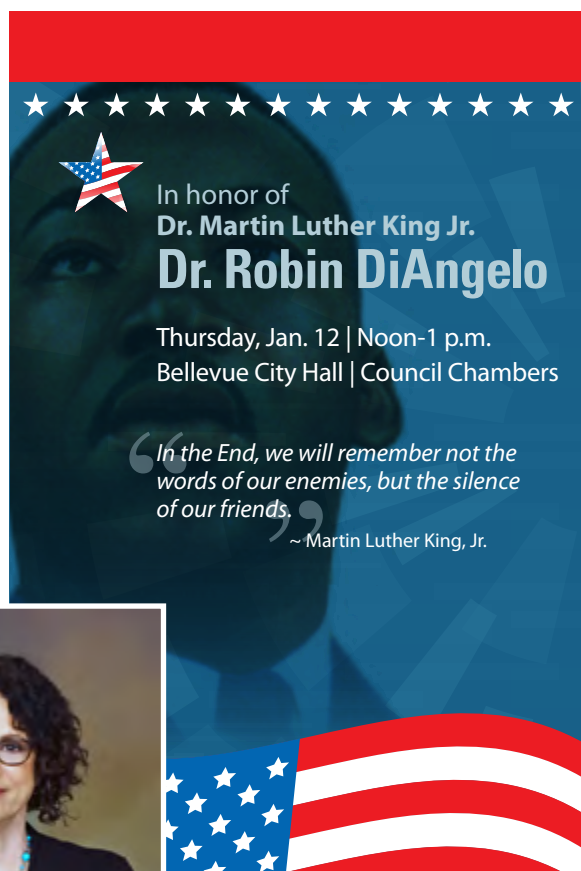


## Dr. Martin Luther King Program



*Thursday, January 12, 12-1pm*  
*Bellevue City Hall*  
*Council Chambers*

***Sponsors: City of Bellevue, Friends of the Bellevue Public Library, King County Library System***

Can we talk about White identity? The work of creating Dr. Martin Luther King's "beloved community" is informed by learning about the shared experiences of what it means to be African American, or Latino American, or Asian American, or (fill in your race/ethnicity here) in the United States. What is often missing from the conversation is an exploration about what it means to be White. How can a deeper

understanding of White identity inform our progress toward creating a more just and equitable community for everyone?

Dr. DiAngelo will describe the way race — post-civil rights — shapes the lives of White people, explain what makes racism so hard for White people to see and identify common racial patterns that prevent us from moving towards greater racial equity. Weaving information, analysis, stories, images and familiar examples, she provides the framework needed to develop White racial literacy.

Dr. DiAngelo, two-time winner of the University of Washington's Student's Choice Award for Educator of the Year, is the author of numerous publications including, "What Does it Mean to be White?: Developing White Racial Literacy." Her work on White Fragility, featured in Alternet, Salon, NPR, The New York Times, The Atlantic, Slate and Colorlines, has influenced the national dialogue on race.

For additional information or accommodation needs, please contact Mark Manuel at 425-452-7886 or [mmanuel@bellevuewa.gov](mailto:mmanuel@bellevuewa.gov)



# South Bellevue Community Center (SBCC) 11th Anniversary Celebration

*January 3-9, Free Activities and Classes*

*January 6, 10:30am-12pm, Special Performance "Indoor Play with Alex Zerbe"*

**SBCC, 14509 SE Newport Way**

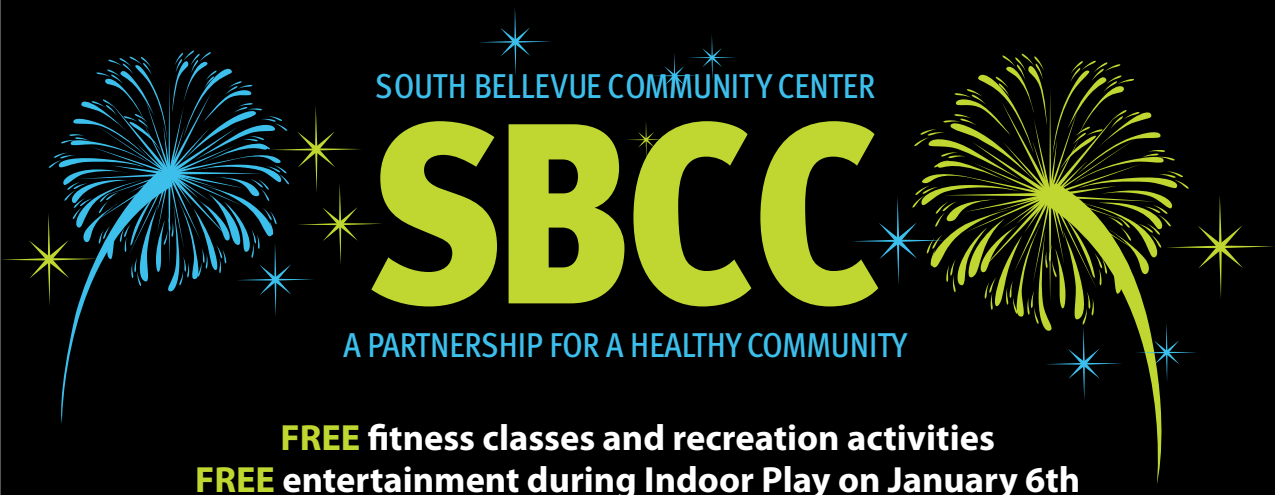
In honor of South Bellevue Community Center's 11th Anniversary, many of our instructors offer their classes, activities and programs for FREE as a thank you to our loyal patrons and as an invitation for any person to try something new!

Come celebrate with Indoor Cycling, ZUMBA, Boot Camp with Karie, Parent/Child Indoor Play, Strong & Fit for Seniors/Adults, Drop-in Basketball/Pickle Ball/Badminton/Volleyball, Total Body Fitness, Rock Climbing, Purna Yoga, Pilates, Barre, Jazzercise, Yang Style Tai Chi, Parkour, Post Rehab Strength and Conditioning, Ballet and more!

On January 6, join us and the two-time Guinness World Record holder Alex Zerbe for a special performance event— "Indoor Play with Alex Zerbe". With captivating amounts of energy, Alex Zerbe moves like a rubber band from one end of the stage to the other. Beatboxing, juggling, dancing, singing, music and magic are just a few of the things that led Piers Morgan of *America's Got Talent* to call Alex, "The total package." Kids will enjoy Indoor Play from 10:30am to 11:15am, performance will start at 11:15am.

For more information, call 425-452-4240 or visit our web page to view the free class and program schedule <http://bellevuewa.gov/pdf/Parks/sbcc-11th-anniversary-free-class-schedule.pdf>

## SBCC Anniversary Celebration January 3–9, 2017



**Complete schedule at [www.bellevuewa.gov/sbcc](http://www.bellevuewa.gov/sbcc) • 425-452-4240**



## Park-and-Ride Options during East Link Construction

### *New commuter lots now open*

Sound Transit has opened new park-and-ride lots in Eastside communities in advance of East Link light rail construction. Commuters are encouraged to start using the new locations prior to the closure of the South Bellevue Park-and-Ride. Visit the East Link Park and Ride page (<http://www.soundtransit.org/Rider-Guide/Parking/plan-ahead-2017-park-and-ride-closures>) to view a map with the new park-and-ride locations and to find information about other travel options.

Bus routes serving the new lots ([http://www.soundtransit.org/sites/default/files/project-documents/FOLIO\\_Park%20and%20Ride%20Options\\_11232016.pdf](http://www.soundtransit.org/sites/default/files/project-documents/FOLIO_Park%20and%20Ride%20Options_11232016.pdf)) connect with many of the same routes and destinations as those serving the South Bellevue Park-and-Ride.

The South Bellevue Park-and-Ride will be closing for East Link construction as early as January 2017 for up to five years. Sound Transit and the City of Bellevue will explore opportunities with the contractor to open the park-and-ride earlier if possible.

Sound Transit's park-and-ride replacement plan takes a three-prong approach to providing options during the closure:

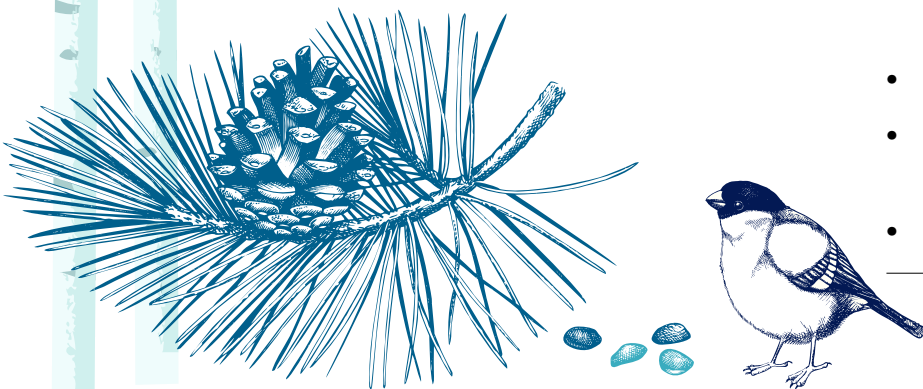
- **New park-and-ride lots** (many of which are closer to travelers origin and identify existing park-and-ride lots with capacity.) These park-and-ride lots are served by transit that connects with routes traveling to destinations served by the ST 550. In many cases, the trip will now involve a transfer, but by offering park-and-ride lots closer to the trip origin, the overall trip time may not be significantly impacted.



- **Improve service on routes** traveling to downtown Seattle and downtown Bellevue, the two primary destinations of South Bellevue Park-and-Ride users. View Sound Transit's Express Bus improvements on the Eastside (<http://www.soundtransit.org/Rider-Guide/Parking/plan-ahead-2017-park-and-ride-closures>).
- Sound Transit, in partnership with King County Metro, is helping you find alternatives to driving alone. Learn more about your travel options, including requesting a custom commute plan and sign-up for perks and rewards at [justonetrip.org](http://justonetrip.org). Click on the "Resources" tab at the top to learn more about transit, ridesharing, taxi, bicycling and walking, and King County Metro Accessible Services.

### **More information:**

- King County Metro's Park-and-Ride webpage (<http://metro.kingcounty.gov/tops/parknride/>)
- Sound Transit East Link News subscription ([www.soundtransit.org/subscribe](http://www.soundtransit.org/subscribe))
- City of Bellevue East Link alert subscription (<http://bellevuewa.gov/light-rail.htm>)
- Choose Your Way Bellevue (<http://www.chooseyourwaybellevue.org/>)
- Just One Trip (<https://justonetrip.org/>)
- Choose Your Way Bellevue (<http://www.chooseyourwaybellevue.org/>)
- Just One Trip (<https://justonetrip.org/>)





## City to Offer Adult Programs at Boys & Girls Club of Bellevue's New Main Club



Bellevue's Parks & Community Services Department is now offering adult fitness, wellness and continuing education programs at

the state-of-the-art downtown Boys & Girls Club of Bellevue's state-of-the-art Main Club, 209 100th Ave. NE.

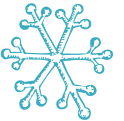
Daytime adult fitness, wellness and continuing education programs for adults include:

- Fit 4 Mom Stroller Striders Class
- Easy Mindful Movement Chi Kung

- Beginning water color, pencil, and pastel art classes
- TELOS Continuing education classes in partnership with Bellevue College.
- "Connections Club" for adults 50+

For over 22 years, the city and BGCB have collaborated, co-managed and provided programming at five facilities throughout Bellevue.

Main Club, a partnership between the city of Bellevue and the Bellevue Boys & Girls Club, promotes programs that build a healthy community.



For a complete schedule of adult classes, visit [parksreg.bellevuewa.gov](http://parksreg.bellevuewa.gov) or contact the Bellevue Parks Northwest Arts Center at 425-452-4106 or [NWAC@bellevuewa.gov](mailto:NWAC@bellevuewa.gov)



## An Evening of Cultural Conversations: Becoming and Belonging

*Wednesday, February 1, 7-9pm*

*Bellevue City Hall Council Chambers, 450 110th Ave NE*

Join with your friends, family and neighbors, for this year's annual Cultural Conversations evening forum of storytelling and community conversation about how becoming more of our authentic selves can create a greater sense of belonging not just for the individual, but for all of Bellevue's residents.

This theme of belonging and community emerges as the City of Bellevue continues to grow. In 2016 we hit a diversity milestone with people of color comprising 50% of the overall population. The City is exploring access and inclusion all the more in areas ranging from civic engagement, housing and our neighborhoods, employment, health and safety, education, communication, transportation and culture.

Through the theme of the evening, we will highlight the stories of Bellevue residents, both long-time and newly arrived moving through the challenge of belonging, who have struggled with

social or cultural isolation, felt visibly different from the larger community, or wanted to develop the awareness and skills to better bridge a changing community.

### **The Power of a Young Person's Voice**

Rolando is an 8th grader at the International School in Bellevue and a resident of the Highland Village Apartments where his family and 75 others were at risk of losing their homes last summer. Rolando will share the role he played in an unprecedented turn of events.

### **Personal Risk and Unexpected Outcomes**

Susan is actively engaged in diversity work in the community, and as part of her ongoing learning, she took a risk last year that had an unexpected outcome. She will share the power of a "do over," and what she gained as a result.



### **The Real Barrier Is Invisible**

Amin is the son of Pakistani immigrants whose experience being in a wheelchair kept him from having a normal social life. Amin faced his loneliness and will speak about the journey that turned his life around and guided him to help others overcome their own barriers.

### **Achieving Goals by First Being Myself**

Jiajun arrived in the U.S. from China at age 15 and three days later he was a new student at Sammamish High School, intent on learning English as fast as possible to achieve his dreams. Hear his story about overcoming challenges and supporting new immigrant students to succeed in high school.

### **Finding Home**

Claire and Eddy are first generation immigrants raising young children and they're opening a new community café in Bellevue, which is the culmination of their values and dreams. Their hopeful and adventurous approach to life's challenges is an inspiration to many.

These themes will be facilitated by Debbie Lacy, professional coach and consultant, followed by community table conversations. This event, free and open to the public is recommended for individuals age 13 and up, all abilities, cultures and faiths. Visitor parking is limited and available on a first-come, first-served basis. For accommodation needs or more information about the program, please contact Carol Ross at 425-452-7917 or [cross@bellevuewa.gov](mailto:cross@bellevuewa.gov).

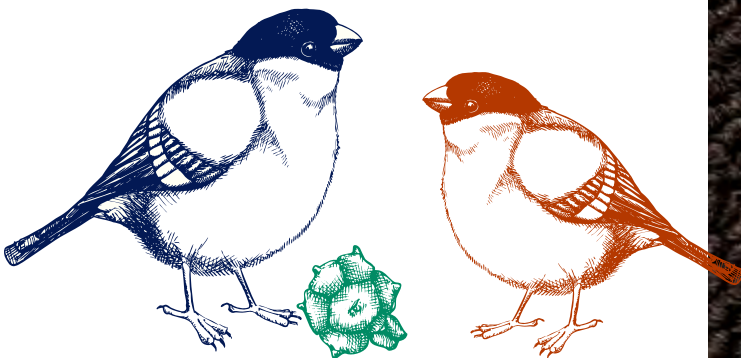
## **Holiday Decoration Drive**

*South Bellevue Community Center*

*14509 SE Newport Way*

Now that the holidays are over, it's time to pack up the decorations. Many holiday decorations ended up in the trash or recycling bin every year. Have you thought about donating them so those who can't afford the expenses can have something festive for their family to enjoy during the holiday season?

South Bellevue Community Center welcomes your unwanted, reusable and functional holiday decorations all year long! A family in need will benefit from your donation. For more information contact South Bellevue Community Center [sbcc@bellevuewa.gov](mailto:sbcc@bellevuewa.gov) or 425-452-4240.



## West Lake Sammamish NEP Open House

*Thursday, February 2, 6:30-8:30pm*

***Phantom Lake Elementary School, 1050 160th Ave SE***

The Neighborhood Enhancement Program (NEP) is a \$5M, city-funded, capital improvements program that empowers residents to propose and select moderate projects that improve the quality of life and enhance the character of their neighborhoods. The program rotates through the City's 14 NEP Neighborhood Areas over the course of seven years (2015-2022), serving two areas each year. To find out which NEP Neighborhood Area you call home, when NEP will be in your area, and how much funding your area will receive, please visit <http://www.bellevuewa.gov/nep.htm>.

We are thrilled to announce that we received nearly 120 project requests for West Lake Sammamish! The NEP team has begun to evaluate the requests, assessing the accessibility, feasibility, cost and maintainability of each to determine which are eligible for the ballot. Popular project requests included sidewalks, crosswalks, traffic signals and park improvements, while popular project locations included West Lake Sammamish



Parkway, SE 34th Street, SE 24th Street, SE 26th Street, the Lake Sammamish Park property and Spiritridge Park.

The open house will provide a brief overview of the project ideas we received, visuals that describe and show each project proposed for the ballot, and the opportunity to offer your comments on the proposed projects. All open house materials, including the project description boards and presentation, will be available on the NEP website the week of the 2/2/2017. <http://www.bellevuewa.gov/nep.htm>.

For more information about the Neighborhood Enhancement Program, please visit the website or contact the NEP Coordinator, Emily Kish at [ekish@bellevuewa.gov](mailto:ekish@bellevuewa.gov).

## Bellevue Way SE Southbound HOV Lane Open House

*Thursday, January 19, 5 -7pm*

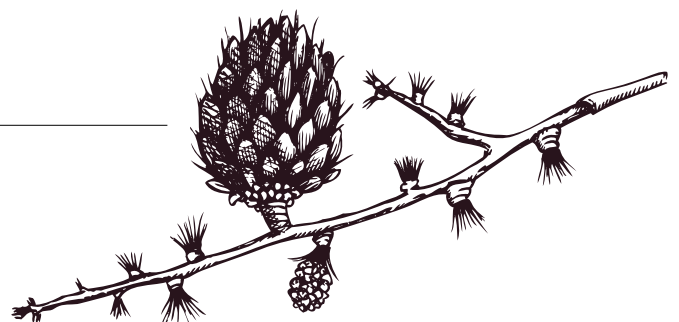
***Bellevue City Hall Concourse, 450 110th Ave NE***

If you live in the West Bellevue area, please join us for the Bellevue Way SE HOV Lane project open house. You will:

- Learn more about the project, progress to date, and comments received from the community so far
- Share your opinions about the corridor design options and design features
- Ask questions or talk with project staff

If you are unable to attend the open house, you will be able to participate online, starting January 10. Please find the online information at [www.bellevuewa.gov/bellevue-way-hov-lane.htm](http://www.bellevuewa.gov/bellevue-way-hov-lane.htm)

If you have questions or comments, please contact Marina Arakelyan, project manager, at 425-452-4632 or [marakelyan@bellevuewa.gov](mailto:marakelyan@bellevuewa.gov)







# TRAFFIC CORNER



Construction continues in January for a number of projects. We apologize, ahead of time, for any traffic delays that you encounter.

The following project locations serve a high volume of traffic so, if possible, use an alternate route:

## Lane or full road closures:

- **Northup Way Connection to SR 520 Trail:** Bike lanes, sidewalks, intersection, traffic signal and wall work continues on Northup Way from 116th Ave NE to NE 24th St. Expect impacts from the 116th Ave NE intersection west toward NE 24th, Monday through Friday, 7 am – 4 pm.
- **120th Ave NE, Stage 2: NE 8th St to NE 12th St:** Work is expected to resume in early January.
- **120th Ave NE, Stage 3: NE 12th St to NE 16th St:** To build a five-lane roadway with bike lanes, the road is closed between the 1400 block and 1600 block until April 2017.

Besides City of Bellevue projects, here are construction impacts related to East Link light rail:

**110th Ave NE from Main St/112th Ave SE to 110th Ave NE/NE 6th St:** Lane closures along Main St and 110th Ave NE. Traffic control set up will change day-to-day as the work progresses from south to north. Tunnel monitoring equipment installation along the alignment through late 2016.

- **Main St/& 112th Ave:** Expect intermittent lane and sidewalk closures for dirt hauling due to tunnel excavation.
- **NE 2nd Pl from 110th Ave NE to 111th Ave NE:** Closed through 2018 to allow use of the right of way as a staging area for Sound Transit's contractor.

*Please note:* This list does not include the current lane closures due to private development projects being constructed in downtown Bellevue. For information about those projects, please refer to: [www.bellevuewa.gov/pdf/Development%20Services/lu\\_MajorProjects.pdf](http://www.bellevuewa.gov/pdf/Development%20Services/lu_MajorProjects.pdf)

**Construction Information Tools:** To stay up-to-date about where construction has lane or full road closures, please use the following information tools:

- Electronic Message boards: Gives dates or times of upcoming lane or road closures.
- Real-time Traffic Map & Cameras: [www.bellevuewa.gov/trafficmap](http://www.bellevuewa.gov/trafficmap)
- Traffic Advisories webpage: [www.bellevuewa.gov/traffic\\_advisories.htm](http://www.bellevuewa.gov/traffic_advisories.htm)
- Follow the Transportation Department on Twitter: @BvueTrans
- Capital Project (Interactive) Map: [www.bellevuewa.gov/capital-projects-map.htm](http://www.bellevuewa.gov/capital-projects-map.htm)
- Sign up for email alerts on project webpages: [www.bellevuewa.gov/transportation.htm](http://www.bellevuewa.gov/transportation.htm)

**Thank you for your patience and understanding  
as we make these improvements around Bellevue!**



## Boards and Commissions Meetings

*(All meetings are in City Hall unless otherwise noted. Agendas are subject to change. You may confirm with Neighborhood Outreach the day before or day of the meeting. Or consult the City web pages listed below to download agendas.)*

**East Bellevue Community Council** (6:30pm, Lake Hills Clubhouse, 15230 Lake Hills Blvd) First Tuesday of each month <http://bellevuewa.gov/ebcc.htm>

**Arts Commission** (4:30pm, 1E-109) First Tuesday of each month [http://www.bellevuewa.gov/arts\\_comm.htm](http://www.bellevuewa.gov/arts_comm.htm)

**Environmental Services Commission** (6:30pm, 1E-113) First Thursday of each month [http://bellevuewa.gov/envIRON\\_serv\\_comm.htm](http://bellevuewa.gov/envIRON_serv_comm.htm)

**Planning Commission** (6:30pm, 1E-113) Second and fourth Wednesday of each month [http://bellevuewa.gov/planning\\_commission.htm](http://bellevuewa.gov/planning_commission.htm)

**Transportation Commission** (6:30pm, 1E-113) Second Thursday of the month of each month [http://bellevuewa.gov/trans\\_comm.htm](http://bellevuewa.gov/trans_comm.htm)

**Human Services Commission** (6pm, 1E-113) First and third Tuesday of each month [http://www.bellevuewa.gov/human\\_serv\\_comm.htm](http://www.bellevuewa.gov/human_serv_comm.htm)

**LEOFF 1 Disability Board** (6pm, Room 1E-118) First Tuesday of each month <http://www.bellevuewa.gov/leoff-1-disability-board.htm>

**Library Board** (5pm, Lake Hills, Bellevue or Newport Way Library) The third Tuesday of each month [http://www.bellevuewa.gov/library\\_board.htm](http://www.bellevuewa.gov/library_board.htm)

**Parks & Community Services Board** (6pm, 1E-113) Second Tuesday of each month [http://www.bellevuewa.gov/parks\\_board.htm](http://www.bellevuewa.gov/parks_board.htm)

**Network on Aging** (8:30pm, 1E-113) First Thursday of each month [http://www.bellevuewa.gov/network\\_on\\_aging.htm](http://www.bellevuewa.gov/network_on_aging.htm)

**Special Events Committee** (8:30pm, 1E-112) Second Thursday of each month [http://bellevuewa.gov/special\\_events\\_committee.htm](http://bellevuewa.gov/special_events_committee.htm)

**Youth Link Board** (6pm, 1E-120) Second Wednesday of each month [http://www.bellevuewa.gov/youth\\_link\\_board.htm](http://www.bellevuewa.gov/youth_link_board.htm)

*Bellevue's Neighborhood Outreach Office offers a variety of programs and partnerships for neighborhood leaders and active residents. To learn more about citizen involvement opportunities and programs to enhance neighborhoods, please visit our website at <http://www.bellevuewa.gov/neighborhood-outreach.htm> or call 425-452-6836 or email: [neighborhoodoutreach@bellevuewa.gov](mailto:neighborhoodoutreach@bellevuewa.gov)*

**City Council** <https://bellevue.legistar.com/Calendar.aspx>

Day	Scheduled Meeting(s)	Location	Public Comment Opportunity
1st and 3rd Mondays except in August and December	6pm, Study Session	Council Conference Room	None
	8pm, Regular Session	Council Chambers	8pm, Oral Communications
2nd and 4th Mondays except in August and December	6-10pm, Extended Study Session	Council Conference Room	6pm, Oral Communications
August - first Monday only	6pm, Study Session	Council Conference Room	None
	8pm, Regular Session	Council Chambers	8pm, Oral Communications
December - first and second Mondays only	6pm, Study Session	Council Conference Room	None
	8pm, Regular Session	Council Chambers	8pm, Oral Communications