

neighborhood news



May 2019

news for and about
Bellevue neighborhoods

Mother's Day at the Garden and National Public Gardens Week



Celebrate the special mom in your life by bringing her to the Bellevue Botanical Garden on Mother's Day! Mother's Day is Sunday, May 12, and events will take place from 11am – 4pm. The event is free to all.



Activities on Mother's Day include posy-making, ballroom dancing demonstration, live music, plein air artists, shopping in the Trillium Store and refreshments for purchase at the Copper Kettle Coffee Bar. Enjoy the beauty as spring blossoms abound in early May!

The newly renovated Native Discovery Garden will be re-opening on Mother's Day. You'll be able to view the new entry path, increased accessibility, updated signage, new benches and planters, hundreds of new native plantings and speak with members of the Washington Native Plant Society.

Mother's Day is also the kickoff of National Public Gardens Week! Special activities will take place at the Garden May 13-19, including curator-led tours Monday – Friday at 11 a.m., a lecture and other special events throughout the week, a dahlia planting demonstration and opportunities to meet many of our partner groups. Find details on our website (BellevueBotanical.org), or call 425-452-2750.

The Garden is open and free to the public every day from dawn to dusk. Free parking for these events is available at the Garden, and overflow parking is available at Wilburton Hill Park, a 5-minute walk from the Garden.

Visit BellevueBotanical.org for more details about visiting the Garden.

Save the Date for the next Cultural Conversations on June 4!

"Invisible Disabilities: The Power in Connecting and Finding Voice"

Crossroads Community Center
16000 NE 10th St., Bellevue WA



On Tuesday, June 4, join us at Crossroads Community Center from 1-2:30 p.m. as we explore the world of invisible disabilities through storytelling. An invisible disability is not obvious; it could be a physical, mental, cognitive or developmental condition that changes a person's ability to engage in certain tasks or actions or participate in typical daily activities. This conversation will focus on the power of connection and sharing and listening to others so that we might begin to see the whole person. Storytellers will share the challenges of being vulnerable, finding voice, creating support and developing new ways to feel seen.

According to "Disabled World Towards Tomorrow," ten percent of the population of the United States identifies

Continued on next page



Subscribe to Neighborhood News electronically:
Planning.BellevueWA.gov/neighborhood-news



For alternate formats, interpreters, or reasonable accommodation requests please phone at least 48 hours in advance 425-452-2735 (voice) or email mheilman@bellevuewa.gov. For complaints regarding accommodations, contact City of Bellevue ADA/Title VI Administrator at 425-452-6168 (voice). If you are deaf or hard of hearing dial 711. All meetings are wheelchair accessible.

Continued from previous page

as having an invisible disability. These disabilities are unrecognized by those close in proximity and may go undiagnosed due to fear, denial and cultural norms. Someone who may appear typically-able may in fact have seizures, a blind person may appear sighted, and you may never know that your best friend has concerns about their mental health.

The event is free, refreshments are provided and women of all ages, faiths and cultures are encouraged to attend. To fully participate in the sharing, attendees are advised to arrange for child care. The event is recommended for individuals ages 13 and up.

For more information and to RSVP, please contact NeighborhoodOutreach@Bellevuewa.gov or 452-452-6836.

Bellevue Network on Aging Resource Fair



Tuesday, May 14, 2-2:30 p.m.

Bellevue Library

1111 110th Avenue NE

You're invited to attend this free event organized by the King County Library System and City of Bellevue to learn what local organizations are doing in the community! The Bellevue Community Resource Fair provides a convenient opportunity to talk to multiple agencies in the area and learn about their services. Representatives from health, food assistance, mental health, transportation, employment and housing services will be available.

The fair will be on Tuesday, May 14, 2-3:30 p.m. in Room 1 at the Bellevue Library, 1111 110th Ave NE, Bellevue, WA. If you have any questions or need more information, please contact Natalie Minas at City of Bellevue: nminas@bellevuewa.gov or 425-452-5278.

FOCUS GROUP: Parks & Community Services Aging Adult Vision Project Plan.

The Bellevue Parks & Community Services Department is updating its recreation vision of service for aging adults in Bellevue. Your input is valuable for goal development, and will be part of the Parks & Community Services Aging Adult Vision Project Plan. You're invited to share your ideas at a focus group at **Crossroads Community Center** on **Tuesday May 7, 5:30-7 p.m.**

RSVPs are appreciated, but drop-in participation is welcomed. RSVP to dlassiter@bellevuewa.gov For more information, please call Dan Lassiter at 425-452-4470.



Need help with projects outside your house?

Application deadline: May 31

Overwhelmed with yardwork? Does your house need a fresh coat of paint? Residents who need help with outside home maintenance can apply for help from a team of volunteers who will do one-day yard clean-ups, single-story exterior painting, or fence and deck repairs on up to 20 Bellevue houses.

Now in its twelfth year, "Day of Sharing and Caring" is a partnership of the City of Bellevue and Jubilee REACH, a Bellevue-based non-profit. The deadline for submitting a request for assistance is May 31. A committee representing Jubilee REACH will review applications and select projects. Residents whose projects are selected will be notified by July 16.

"Day of Sharing and Caring" improvements will take place starting late July through Saturday, Sept. 21. To be considered for this opportunity, you must own and occupy a house in Bellevue. Home selection is need-based; residents facing economic or other life challenges are encouraged to apply.

For more information or to receive a home improvement request card, please contact Neighborhood Outreach, NeighborhoodOutreach@bellevuewa.gov or 425-452-6836.



New to Bellevue?

Welcome to City Hall!

Friday, May 17, 11:00 a.m.-2 p.m.

450 110th Ave. NE – City Hall Concourse



If you or someone in your neighborhood is new to Bellevue and has never visited City Hall, this fun and informative tour is for you!

“Welcome to City Hall” will introduce you to the basics of Bellevue city government and to the many resources available at City Hall. This event is FREE and a light lunch is included. Pre-register your preferred language of English or Chinese. Registration is required and space is limited. Please contact Julie Ellenhorn at 425-452-5372 or jellenhorn@bellevuewa.gov to register.

貝爾優的新移民，歡迎你到市政廳來！

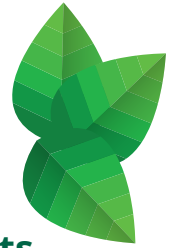
五月十七日，星期五，上午11:00至下午2:00

貝爾優市政廳大廳（地址：450 110th Ave. NE, Bellevue）

如果您或者您的鄰居，朋友是貝爾優的新移民，並且從未訪問過市政廳，那麼我們歡迎你參加這個名為“歡迎來到市政廳”的活動！

我們將向您介紹市政府的基本信息以及貝爾優市為市民提供的各項服務。此活動免費，名額有限，我們將為參與者提供免費午餐，請提前註冊。如有興趣獲取更多關於本次活動的信息或者註冊，請致電425-452-4342或電子郵件 ycarlson@bellevuewa.gov

Bellevue Essentials



All About Bellevue!

Bellevue Essentials begins its seventh year

The popular nine-week introduction to the inner workings of city government starts Sept. 25, and Bellevue Essentials is now recruiting the Class of 2019! Join a cohort of 35 exceptional individuals who will be selected to learn, engage and simulate the day-to-day challenges and opportunities that face the community. Class meets every Wednesday night, 5:30-9 p.m. through Nov. 13.

The multi-week course is for residents who are curious about civic engagement and local government, and are committed to the future of Bellevue and serving their community.

Bellevue Essentials Information Meetings

Tuesday, June 11, 6-7 p.m., Lake Hills Library,
15590 Lake Hills Blvd

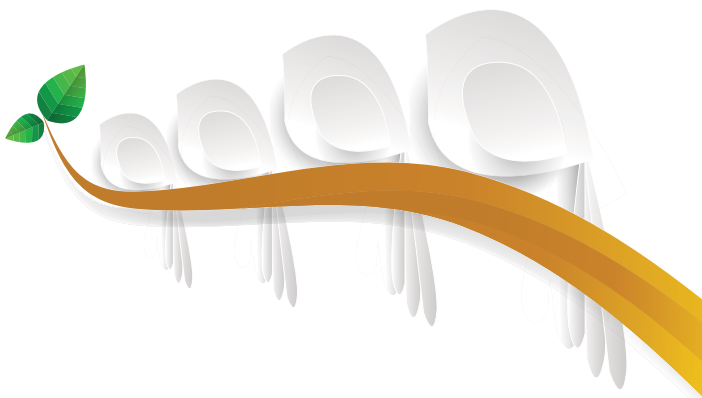
Wednesday, June 12, 6-7 p.m., Bellevue City Hall,
450 110th Ave NE, Room 1E-112



The evening includes an overview of the program, firsthand experiences of several graduates and a chance to ask questions and mingle with potential classmates. Attendance is not required to apply. The meetings will give potential applicants a clear picture of what Bellevue Essentials is all about!

Applications for the 2019 class are due by Aug. 2. Tuition is \$125, but fee waivers are available if needed. Brochures and applications are available now at bellevuewa.gov/bellevue-essentials.

For more information or to request a hardcopy packet, contact Neighborhood Services at 425-452-6836 or neighborhoodoutreach@bellevuewa.gov.



Conversation or Confrontation?

Spring is here and the garden is calling. Time to plant the peas! Tend those tulips! Breathe in the fresh warm air and ...

good gravy, is your neighbor ever going to do anything with his yard? There are more dandelions than grass! And those things spread; that gentle spring breeze is wafting more noxious seeds onto your lawn by the minute.

Something has to change! You're going to have to talk to your neighbor. Property values and peace of mind are at stake. But how? Here are a few ideas for proceeding peacefully:

Express your concerns and needs — rather than your solutions. Before meeting with your neighbor, think of a way to state the concern in a non-threatening way. Help the other person understand why change is needed. Try to avoid making accusations and state the problem in a way that is easy to hear. This opens the door to more possible solutions.

Instead of: *"You need to spread weed killer this week, before it's too late."*

Try: *"I know that some people really like dandelions, but weeding them has become a full-time job for me. Could we chat about ways to ease the workload?"*

Encourage the other person to tell you their point of view, and ask them for options. Realistic and durable solutions accommodate everyone's needs. By engaging the other person in developing options, you will increase the number of ideas and options to be considered. Instead of: *"Why did you buy a house with a yard if you weren't going to maintain it?"*

Try: *"Is there anything we could try that would reduce weeds for me, and not cost you too much time or effort?"*

Keep it future-focused. The past can't be fixed. Think instead about how things could change for the better going forward.

Instead of: *"You should never have let those awful weeds get out of control."*

Try: *"Dandelions are not to everyone's taste, and I'm wondering if you would work with me to keep them from spreading this year."*

Give it a try. If you want some coaching on your approach, or if things are not going well after trying to have a conversation, please give us a call at 425-452-4091. That's why we're here!

BELLEVUE
**CONFLICT
RESOLUTION**
CENTER



May means

"Bike Everywhere Month"



May is Bike Everywhere Month in Washington. Regionally, Cascade Bike Club promotes biking as a way to get around this month. It's a great time to ride to work, ride to the store or just ride for

fun and exercise.

Some of the activities include Bike Everywhere Day on Friday, May 17, and the 2019 Washington Bikes Bike Everywhere Challenge, an online trip-tracking contest among teams. May is also Bike to School Month.

More information on all of the May activities is available online: www.cascade.org/connect/2019-bike-everywhere-month

Bellevue hosts



"Golden Pearl" Ju Ju at City Hall



In celebration of the Chinese Year of the Pig, the City of Bellevue is honored to host "Golden Pearl" Ju Ju at City Hall. In 2016, new demographic data recognized Bellevue

for its growing diversity, counting Asian Americans as one third of the city's population.

The Pike Place Market Foundation unveiled Ju Ju, in partnership with Washington State Asian Pacific Education & Culture Foundation, Washington State Sichuan Friendship Association, Wing Luke Museum and Artist Zuolie Deng, a traveling art pig to be displayed at the Pike Place Market, businesses in Seattle's Chinatown-International District and other locations around Puget Sound. A sister to Rachel, the famous bronze piggy bank at Pike Place Market, Ju Ju (珠珠) has red coins on her belly, calligraphy on her back and peonies on her cheeks. Ju Ju symbolizes prosperity, good luck and longevity.

Visitors can see Ju Ju on the first floor of City Hall during business hours, May 20-June 30. A community welcome to the exhibit will take place on Thursday, May 30, 12:30- 2:30 p.m. Please register for the event by emailing Yuriana Garcia Tellez at YGarcia@BellevueWA.Gov. City Hall will be closed on Memorial Day, Monday, May 27.

Busy Schedule Marks 2019

Repaving Season

The city's annual repaving work has started, kicking off what promises to be a busy road construction season. This year, approximately 40 lane miles of roadway are scheduled for resurfacing citywide, which includes work carried over from last year. The historical average is around 20 lane miles per year.

In the Eastgate area, contractor Watson Asphalt Paving already has restarted work carried over from 2018. In a few weeks, Lakeside Industries is anticipated to begin improvements programmed for 2019, mostly in north Bellevue.

In addition to restoring smooth roadway surfaces, other improvements will include:

- **Curb ramps:** Crews will replace 69 older curb ramps and construct six new curb ramps, making it easier for people with disabilities to get around.
- **Sidewalks:** Approximately 2,500 linear feet of sidewalk in poor condition will be rebuilt in the Tam O'Shanter neighborhood.



- **Bike lanes:** More than 3.2 lane miles of new bike lanes will be added by restriping pavement after the repaving work is complete, a low-cost way to expand the city's bicycle network. The improvements are partially funded by the 2016 Neighborhood Safety, Connectivity and Congestion Levy.
- **What to expect:** If your street is scheduled for repaving, you will be notified by signs along the roadway, as well as by door hangers when work is about to occur.
- **More information:** The Pavement and Bridge Management Program webpage (search for it at bellevuewa.gov) has more information, including a projects list with specific locations and a map.

Now in its 33rd year, the Pavement and Bridge Management Program (formerly called the Overlay Program) uses biennial pavement condition surveys and analysis systems to prioritize which streets and sidewalks should be repaved in a given year.



Boards and Commissions Meetings

(All meetings are in City Hall unless otherwise noted. Agendas are subject to change. You may confirm with Neighborhood Outreach the day before or day of the meeting. Or consult the City web pages listed below to download agendas.)

Bellevue Diversity Advisory Network

(6 p.m., Bellevue City Hall) Last Tuesday of each month BellevueWA.gov/city-government/departments/city-managers-office/diversity/bellevue-diversity-advisory-network

East Bellevue Community Council (6:30 p.m., Lake Hills Clubhouse, 15230 Lake Hills Blvd) First Tuesday of each month BellevueWA.gov/city-government/east-bellevue-community-council

Arts Commission

(4:30 p.m., 1E-109) First Tuesday of each month BellevueWA.gov/city-government/departments/community-development/arts-and-culture/arts-commission

Environmental Services Commission

(6:30 p.m., 1E-113) First Thursday of each month Utilities.BellevueWA.gov/conservation-and-the-environment/environmental-services-commission

Planning Commission (6:30 p.m., 1E-113) Second and fourth Wednesday of each month BellevueWA.gov/city-government/departments/community-development/planning-commission

Transportation Commission (6:30 p.m., 1E-113) Second Thursday of each month transportation. BellevueWA.gov/planning/transportation-commission

Human Services Commission (6 p.m., 1E-113) First and third Tuesday of each month BellevueWA.gov/city-government/departments/community-services/human-services/human-services-commission

LEOFF 1 Disability Board (6 p.m., Room 1E-118) First Tuesday of each month BellevueWA.gov/city-government/departments/human-resources/retirees-former-employees/leoff-1-disability-board

Library Board (5p.m., Lake Hills, Bellevue or Newport Way Library) Third Tuesday of each month BellevueWA.gov/city-government/departments/city-clerks-office/boards-and-commissions/library-board

Parks & Community Services Board

(6 p.m., 1E-113) Second Tuesday of each month BellevueWA.gov/city-government/departments/city-clerks-office/boards-and-commissions/parks-and-community-services-board

The Bellevue Network on Aging (BNOA)

8:30 a.m., North Bellevue Community Center 4063 148th Ave NE, Bellevue) First Thursday of each month BellevueWA.gov/bnoa

Special Events Committee

(8:30 a.m., 1E-112) Second Thursday of each month Parks.BellevueWA.gov/special-events/special-events-committee

Youth Link Board

(6 p.m., 1E-120) Second Wednesday of each month BellevueWA.gov/city-government/departments/city-clerks-office/boards-and-commissions/youth-link-board

Bellevue's Neighborhood Services Division offers a variety of programs and partnerships for neighborhood leaders and active residents. To learn more about citizen involvement opportunities and programs to enhance neighborhoods, please visit our website at: BellevueWA.gov/city-government/departments/community-development/neighborhoods or call 425-452-6836 or email: neighborhoodoutreach@BellevueWA.gov.

To subscribe to this newsletter, visit: planning.BellevueWA.gov/neighborhood-news

City Council <https://bellevue.legistar.com/Calendar.aspx>

Day	Scheduled Meeting(s)	Location	Public Comment Opportunity
1 and 3 Mondays except in August and December	6 p.m., Study Session	Council Conference Room	None
	8 p.m., Regular Session	Council Chambers	8 p.m., Oral Communications
2 and 4 Mondays except in August and December	6-10 p.m., Extended Study Session	Council Conference Room	6 p.m., Oral Communications
August - first Monday only	6 p.m., Study Session	Council Conference Room	None
	8 p.m., Regular Session	Council Chambers	8 p.m., Oral Communications
December - first and second Mondays only	6 p.m., Study Session	Council Conference Room	None
	8 p.m., Regular Session	Council Chambers	8 p.m., Oral Communications